

## Marsham Street, SW1P

£461 Per week

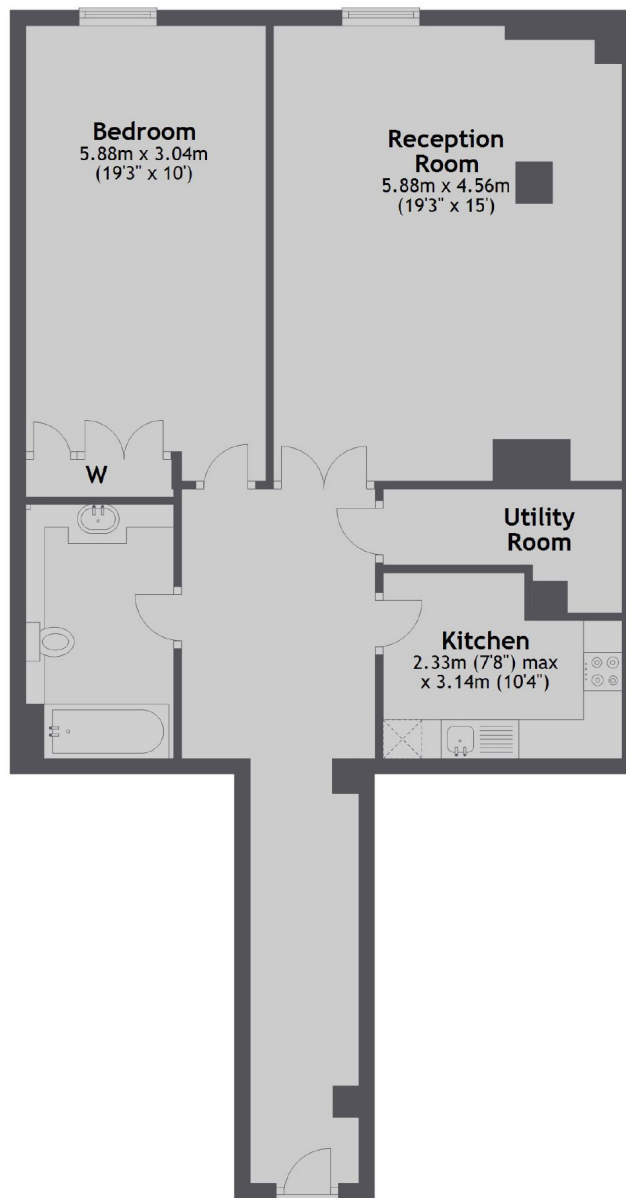
An immaculate ground one bedroom apartment located in a prestigious development in the heart of Westminster. The property comprises a large double bedroom, generous reception room, separate kitchen, modern bathroom and utility room. There is wooden flooring throughout and the

Ideally located for a range of restaurants, pubs and cafes on Horseferry Road, the amenities of the continuously evolving Victoria Street are also within easy reach.

### Features

- One Bedroom Apartment
- Large Reception Room
- High Ceilings
- Wooden Flooring
- 24h Concierge
- Gym

## Marsham Street, London, SW1P



Total area: approx. 80.2 sq. metres (863.4 sq. feet)

### Contact

To arrange a viewing call our office on the number below or visit our website.



Energy Rating: C. We aim to make our particulars both accurate and reliable. However they are not guaranteed; nor do they form part of an offer or contract. If you require clarification on any points then please contact us, especially if you're traveling some distance to view. Please note that appliances and heating systems have not been tested and therefore no warranties can be given as to their good working order.