



## Kingston Road, SW19

£465,000

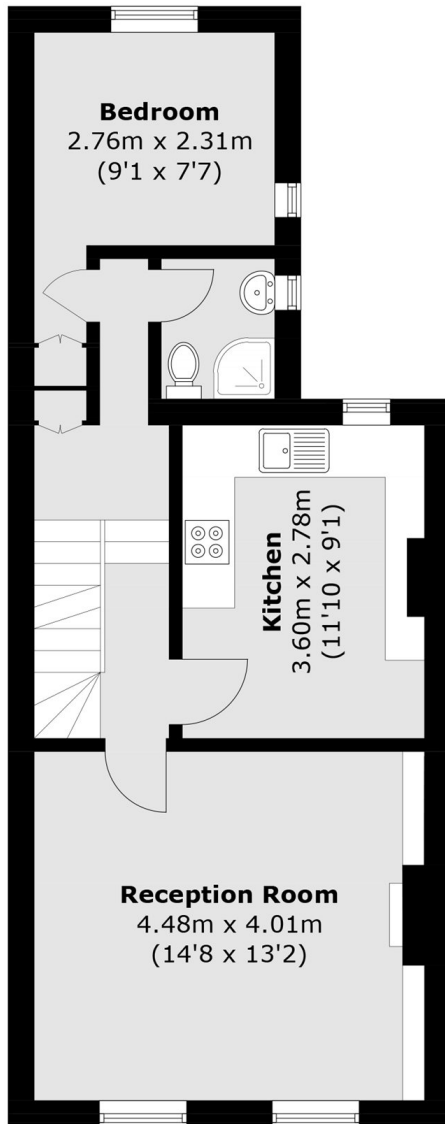
A two double bedroom, two bathroom split level Victorian conversion. The property has a large separate kitchen, bright front reception room with a fireplace and is sold with a share of freehold.

Located close to Wimbledon Town Centre with an eclectic range of restaurants and bars. The property is within a 1 minute walk from an Ofsted-outstanding nursery and good Primary School. You are also just moments away from superb transport links with just a 2 minutes walk from South Wimbledon station and a 5 minute walk to Merton Park station.

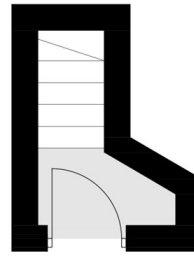
### Features

- Two Double Bedrooms
- Two Bathrooms
- Bright Reception Room
- Close to Three stations
- Share Of Freehold

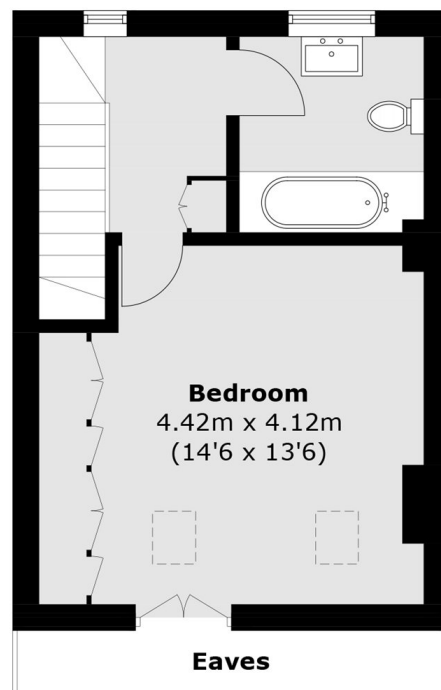
# Kingston Road, London, SW19



**First Floor**



**Ground Floor**



**Second Floor**

Total area (approx.): 80.1 sq.m (862.5 sq. ft)  
(Excluding Eaves)