



Pinkmove

Old Castle Close

Guide Price £200,000 - £205,000

- Guide Price £200,000 to £205,000
- Two Bedrooms
- En-Suite Shower/WC to Master Bedroom
- Family Bathroom and Downstairs Wc
- Loft Space with Pull Down Ladder
- Off Road Parking For Two Vehicles
- Enclosed, Low Maintenance Rear Garden
- Close to Shops, Schools and Local Amenities
- EPC Rating: C



Pinkmove

01633 746088
team@pinkmove.co.uk



Pinkmove

About the property

Brook Cottage is an attractive two bedroom mid-terrace home set within the popular Old Castle Close in Newport, offering an ideal opportunity for small families, first time buyers or those looking to downsize. The property is conveniently located close to a selection of local shops, well-regarded schools and amenities, while Newport city centre is easily accessible. Excellent transport links are also on hand, including nearby bus routes, Newport railway station and straightforward access to the M4 motorway.

The accommodation begins with an entrance hall leading to a convenient downstairs WC positioned to the front of the property, alongside a welcoming family living room with additional downstairs cupboard space.

To the rear, the modern kitchen is well appointed and has French doors that open directly onto the garden, allowing for plenty of natural light and an easy flow for entertaining and day-to-day living.

Upstairs, is a family bathroom and two versatile bedrooms, both featuring built-in storage, with the master bedroom further enhanced by its own en-suite shower room. The landing has a built in airing cupboard, housing the boiler, and there is also access to the large, partially boarded loft space.

Externally, the rear garden is low maintenance and includes a patio seating area and a useful shed positioned to the rear. To the front of the property, there is off-road parking available for two vehicles, adding to the overall convenience of this appealing home.



Pinkmove



Pinkmove



Accommodation

Reception Room

14' 10" x 10' 5" (4.52m x 3.17m)
Max Measurements

Downstairs Wc

5' 5" x 3' 3" (1.65m x 0.99m)

Kitchen

8' 8" x 13' 6" (2.64m x 4.11m)

Bedroom 1

10' 11" x 8' 3" (3.33m x 2.51m)

En-Suite

5' 3" x 5' 1" (1.60m x 1.55m)

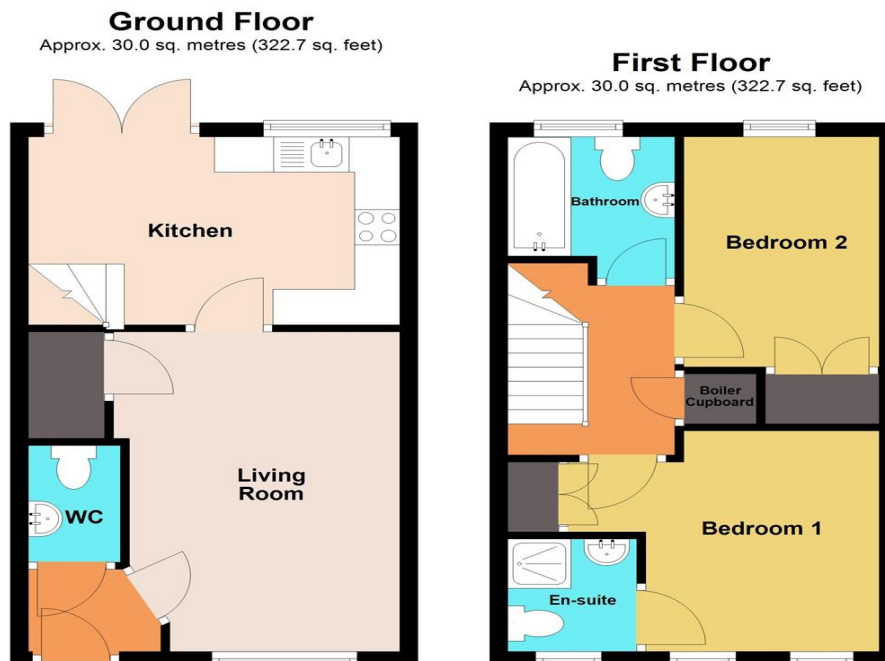
Bedroom 2

10' 8" x 7' 1" (3.25m x 2.16m)

Bathroom

6' 7" x 6' 1" (2.01m x 1.85m)
Max Measurements

Floorplan



Total area: approx. 60.0 sq. metres (645.4 sq. feet)
10 Old Castle Close

Important Information

Note while we endeavour to make our sales details accurate and reliable, if there is any point which is of particular interest to you, please contact the office and we will be pleased to confirm the position for you. We have not personally tested any apparatus, equipment, fixtures, fittings or services and cannot verify they are in working order or fit for their purposes. Nothing in these particulars is intended to indicate that carpets or curtains, furnishings or fittings, electrical goods (whether wired or not). Gas fires or light fittings or any other fixtures not expressly included form part of the property offered for sale. This computer generated Floorplan, if applicable, is intended as a general guide to the layout and design of the property. It is not to scale and should not be relied upon for dimensions. Tenure: We cannot confirm the tenure of the property as we have not had access to the legal documents. The buyer is advised to obtain verification from their solicitor or surveyor.

Peter Alan Limited is registered in England and Wales under company number 2073153, Registered Office is Cumbria House, 16-20 Hockliffe Street, Leighton Buzzard, Bedfordshire, LU7 1GN. VAT Registration Number is 500 2481 05. For activities relating to regulated mortgages and non-investment insurance contracts, Peter Alan Limited is an appointed representative of Connells Limited which is authorised and regulated by the Financial Conduct Authority. Connells Limited's Financial Services Register number is 302221. Most buy-to-let