



LB

Loporto Browne

— RESIDENTIAL —

LB

# St. John's Wood Court, St. John's Wood, NW8

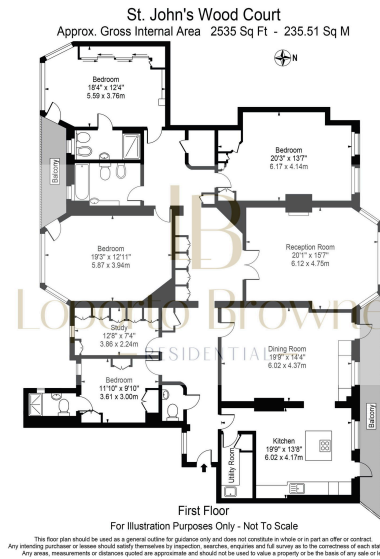
Guide Price £2,500,000

🛏 5 🚿 3 🚗 2



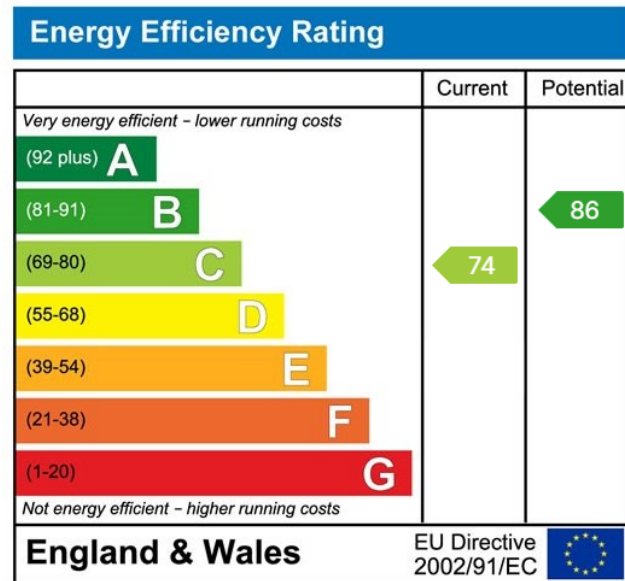
- Guide Price: £2,500,000 to £3,000,000
- Approximately 2,535 sq ft of internal accommodation
- Heating, water and hot water included in the service charge
- Separate kitchen with utility room
- Residents' off-street parking can be applied for
- First floor lateral apartment in an Art Deco mansion block with two private balconies
- Four bedrooms plus fifth bedroom or study
- Two reception rooms including formal dining room, and three bathrooms plus ensuite WC; with head porter living onsite
- Positioned opposite Lord's Cricket Ground, close to St John's Wood, Regent's Park and Maida Vale





### Guide Price: £2,500,000 to £3,000,000

St Johns Wood Court is a wonderfully spacious lateral apartment set on the first floor of a handsome Art Deco mansion block, full of character, scale and quiet confidence. Positioned directly opposite Lord's Cricket Ground, this is a home with a very special London outlook, especially for anyone who understands the magic of cricket at Lord's. Arranged across approximately 2,535 sq ft, the apartment offers the sort of lateral living that is increasingly hard to find in St John's Wood. The layout is generous, practical and elegant, with high ceilings, excellent natural light and a wonderful sense of space throughout. There are four main bedrooms, a fifth bedroom or study, three bathrooms, a guest WC, two reception rooms, a separate kitchen, utility room and two private balconies.



LB Residential

Grand Union Studios  
332 Ladbroke Grove  
W10 5AD

Email: [hello@lbresidential.co.uk](mailto:hello@lbresidential.co.uk)  
Web: [www.lbresidential.co.uk](http://www.lbresidential.co.uk)  
Tel: 0203 062 6262