



## Manchester Street, W1U

£5,850 Per calendar month

A modern apartment arranged over the third and fourth floors of a Georgian townhouse on Manchester Street. The flat has a reception room, guest WC and separate eat-in kitchen on the third floor, and two double bedrooms and a bathroom on the fourth floor.

Manchester Street is an attractive street in the heart of Marylebone Village made up of predominantly Georgian buildings. Situated between Marylebone High Street and Chiltern Street, with an abundance of independent boutique shops, cafes, bars and restaurants nearby.

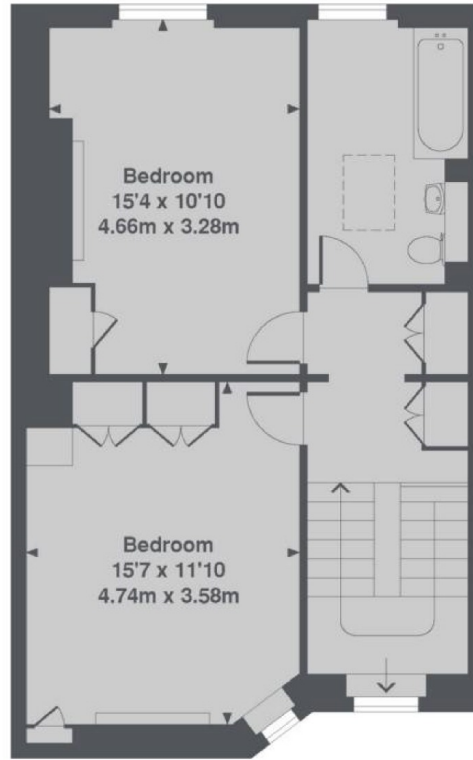
### Features

- Marylebone Village
- Two Bedrooms
- Large Reception
- Eat-In Kitchen
- Unfurnished
- The Portman Estate

# Manchester Street, London, W1U



3rd floor



4th Floor

Manchester Street, W1U  
Total Approx. Floor area 1024 Sq. Ft. (95.1 Sq. M.)