

You can include any text here. This is



ed upon generating your brochure.



Copper Beech Barn, Oxford Road, Gomersal, BD19 4FD

Offers Over £825,000





Copper Beech Barn

Oxford Road, Gomersal

Transport links:

4 minutes to M62

18 minutes to Leeds city centre

50 minutes to Manchester city centre

This property is offered with no chain to allow fast completion

Council Tax band: G

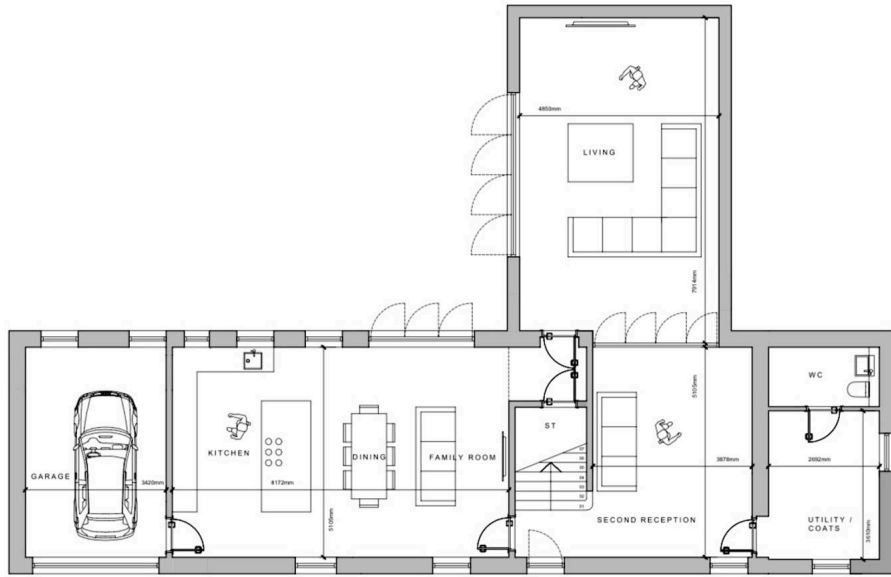
Tenure: Freehold

- Luxury barn conversion
- The primary residence within gated hamlet
- 8 year new home warranty
- Landscaped south facing private garden
- Bi-fold doors from living room & kitchen to garden
- Security camera system & external lighting system
- High ceilings with abundant natural light
- Integrated garage with electric door
- Ample off-road driveway parking
- No chain to allow fast completion

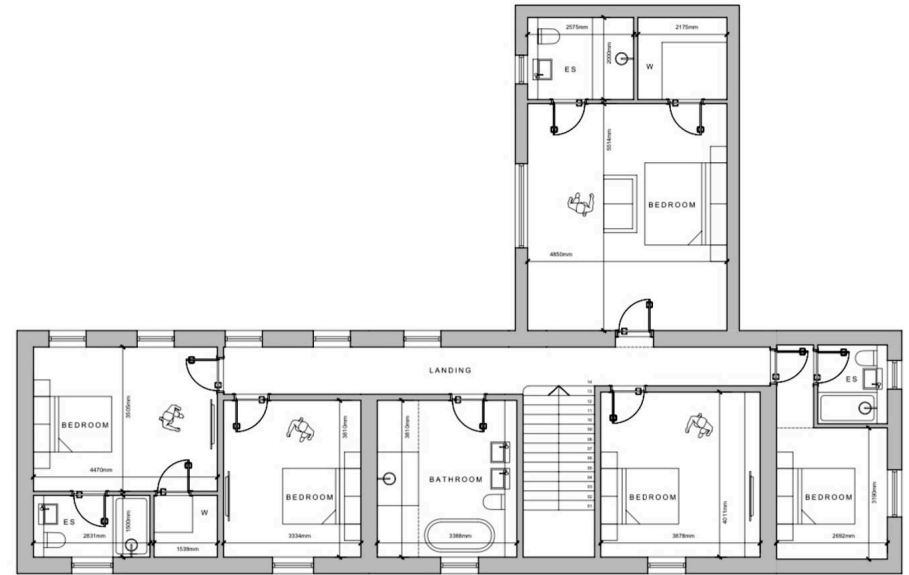








GROUND FLOOR



FIRST FLOOR



Country Home

98 King Street, Knutsford - WA16 6HQ

0330 111 4444

help@countryhome.co

countryhome.co



You can include any text here. This is



ed upon generating your brochure.