



— — — — —
COAST & COUNTRY LIVING

Finer Details



Exclusive 4 bed residence in a sought-after village

Private plot with countryside views

Extensive driveway parking & double garage

Four spacious double bedrooms

Luxury principal suite with bespoke en-suite

Stunning open-plan kitchen, dining & family space

Three reception rooms including office and snug

Beautifully landscaped, private rear garden

Fully redesigned and renovated to an exceptional standard

Tucked away behind private wooden gates and set well back from the road, this outstanding four-bedroom detached residence offers a rare opportunity to acquire a beautifully curated family home in one of Norfolk's most sought-after villages.

Occupying an enviable position with attractive views across open countryside, the property enjoys a wonderful sense of peace and seclusion, whilst remaining at the heart of a thriving village community.

Extensively remodelled and significantly enhanced by the current owners, the home has been transformed into an elegant and contemporary residence where every detail has been carefully considered and no expense spared.

From the moment you arrive, there is an immediate sense of exclusivity. A substantial driveway provides parking for numerous vehicles and leads to a double garage, whilst the mature surroundings and private setting create an impressive first impression.

Beyond the front door, beautifully proportioned accommodation unfolds across two floors, offering the perfect balance of luxurious family living and sophisticated entertaining spaces.





Undoubtedly one of the property's most impressive features is the magnificent open-plan kitchen, dining and family room. Designed to bring people together, this exceptional space effortlessly combines style and functionality, creating a true hub of the home.

The striking central island provides a natural gathering point for family breakfasts, casual dining and entertaining guests, whilst enjoying delightful views over the garden. A comprehensive range of quality cabinetry is complemented by premium integrated appliances, a wine fridge and a traditional butler sink with a Quooker tap, creating a kitchen that is as practical as it is beautiful.

Flooded with natural light, expansive bi-fold doors span the rear elevation and open directly onto the terrace beyond, seamlessly connecting the interior with the garden and creating a wonderful sense of indoor-outdoor living throughout the warmer months.

A spacious utility room sits adjacent to the kitchen, providing additional storage and practical workspace, with direct access to the garden.





The property has been thoughtfully designed to accommodate the demands of modern family life, with a selection of versatile reception spaces offering flexibility for every stage of life.

The sitting room is a superb space, beautifully designed for both relaxation and entertaining. Generous in scale and flooded with natural light, this elegant room features a striking fireplace, bespoke fitted shelving around a media wall and double doors opening directly onto the garden terrace. With views across the private gardens and a stylish yet welcoming atmosphere, it provides the perfect setting for family gatherings, special occasions, or quieter evenings spent unwinding at home.

A separate snug offers an ideal second sitting room, media room or children's playroom, whilst the dedicated home office provides a peaceful environment for remote working, enjoying attractive views across the rear garden.







The first floor continues the home's impressive sense of space and quality, offering four generously proportioned double bedrooms, each benefitting from fitted wardrobes and thoughtfully designed storage.

The principal suite provides a luxurious sanctuary away from the main living areas. Beautifully appointed and generously sized, it benefits from bespoke fitted wardrobes and an elegant en-suite bathroom featuring premium sanitary ware, twin wash basins and a spacious walk-in double shower.

The remaining bedrooms are served by an equally impressive family bathroom, fitted to a high specification and incorporating both a bath and separate shower, perfectly suited to modern family living.







The gardens have been carefully designed to create a private and peaceful extension of the home, offering the perfect setting for both relaxation and entertaining.

A generous patio terrace provides an ideal space for summer dining, evening drinks and hosting family and friends, whilst the lawned gardens beyond offer ample room for children to play and explore. A dedicated play area further enhances the family-friendly appeal of the property.

Enjoying an exceptional degree of privacy and backing onto open countryside, the gardens are not overlooked and provide a wonderful backdrop throughout the seasons. Whether enjoying a morning coffee on the terrace, watching the children play or simply appreciating the surrounding wildlife, the outdoor space is every bit as impressive as the accommodation itself.







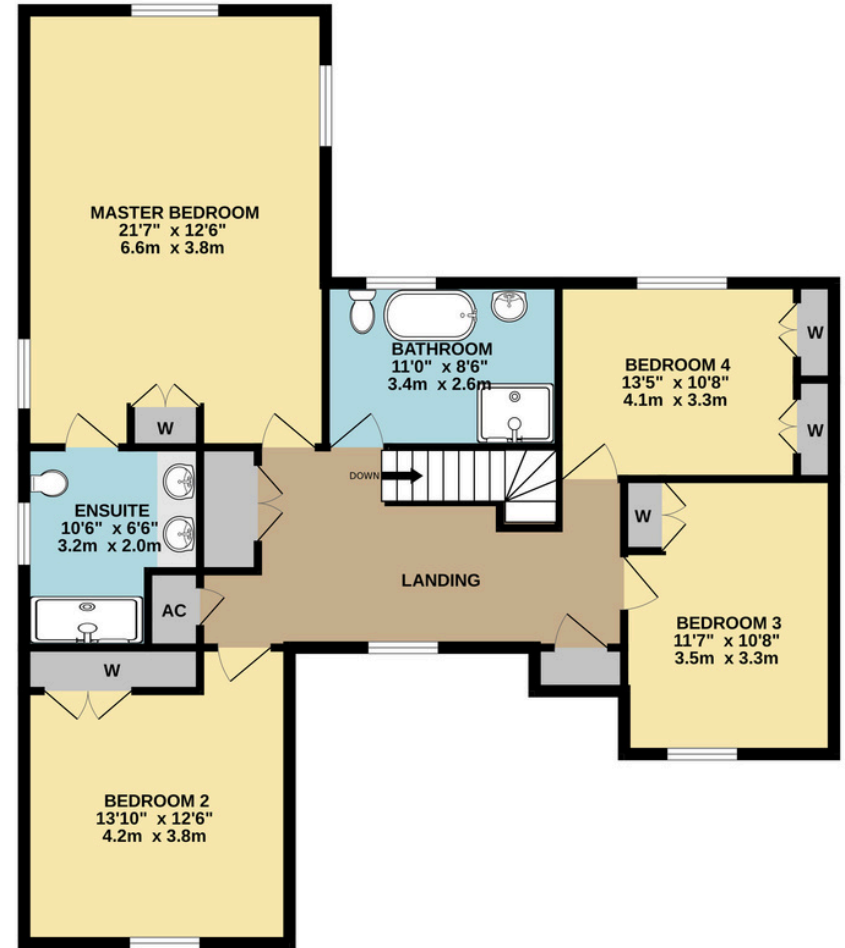




GROUND FLOOR
1373 sq.ft. (127.6 sq.m.) approx.



1ST FLOOR
1140 sq.ft. (105.9 sq.m.) approx.



TOTAL FLOOR AREA : 2513 sq.ft. (233.5 sq.m.) approx.

Whilst every attempt has been made to ensure the accuracy of the floorplan contained here, measurements of doors, windows, rooms and any other items are approximate and no responsibility is taken for any error, omission or mis-statement. This plan is for illustrative purposes only and should be used as such by any prospective purchaser. The services, systems and appliances shown have not been tested and no guarantee as to their operability or efficiency can be given.
Made with Metropix ©2026