



## Great Dover Street, SE1

£650,000

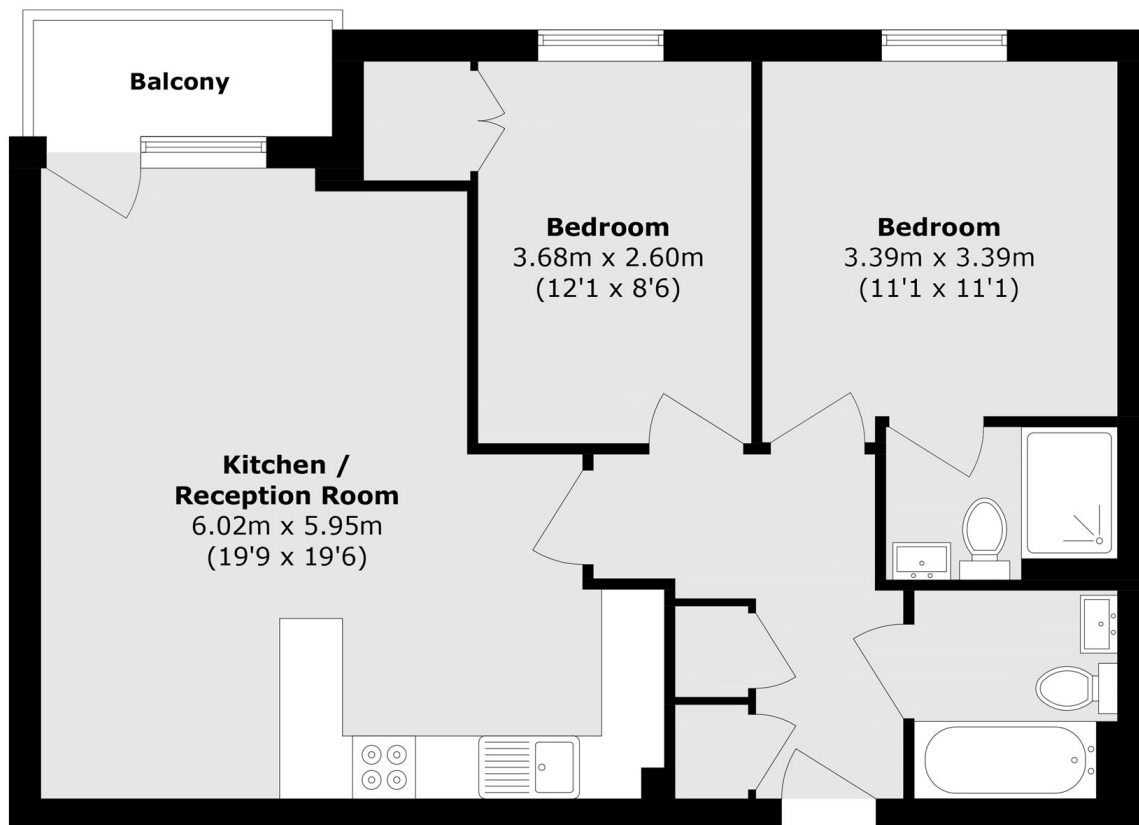
A stylish modern apartment featuring a large open-plan living space with breakfast bar and ample room for dining and relaxing. The property includes two double bedrooms, two bathrooms and a private balcony, along with excellent storage. Residents benefit from secure underground parking, landscaped communal gardens, a porter and an on-site gym.

Longstone Court is superbly located just 0.2 miles from Borough tube station and Borough High Street, with a wide range of shops, cafés and restaurants on the doorstep. London Bridge, Borough Market and the South Bank are all within easy walking distance. Excellent transport links are available via the Northern line, Jubilee line and Bakerloo line, providing swift access across London.

### Features

- Large Open-Plan Living Area
- Two Double Bedrooms
- Two Modern Bathrooms
- Private Balcony
- Secure Underground Parking
- On-Site Porter & Gym
- Chain Free Sale

# Great Dover Street, London, SE1



## Second Floor

Total area (approx.): 69.0 sq. m (742.7 sq. ft)  
Balcony area (approx.): 3.1 sq. m (33.3 sq. ft)