



GLOUCESTER TERRACE, W2

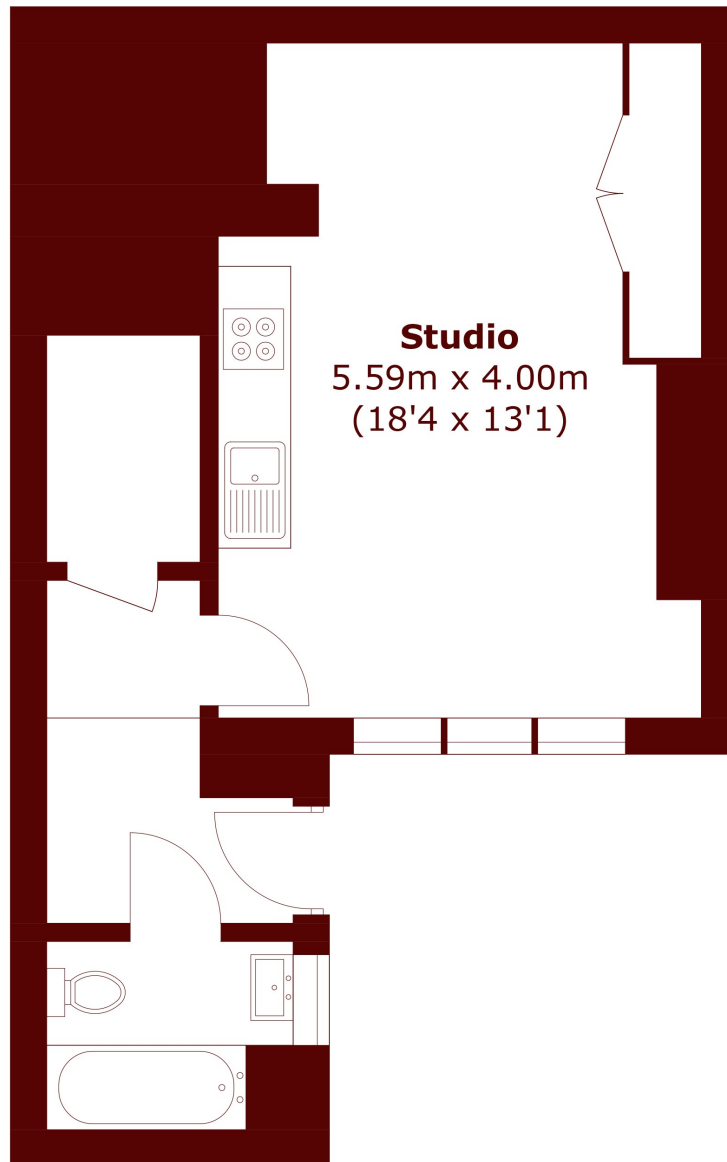
£438 per week (£1,898 per month)

Set on the popular Gloucester Terrace, this well-presented studio apartment boasts a private entrance.

Well presented studio
Private Entrance
Ample Storage

Wooden Flooring
Contemporary kitchen
Close to Hyde Park

STEP INSIDE GLOUCESTER TERRACE



Studio
5.59m x 4.00m
(18'4 x 13'1)

Total area (approx.): 33.3 sq. m (358.4 sq. ft)

Notting Hill
020 7313 6910

Energy Rating: E We aim to make our particulars both accurate and reliable. However, they are not guaranteed; nor do they form part of an offer or contract. If you require clarification on any points then please contact us, especially if you're traveling some distance to view. Please note that appliances and heating systems have not been tested and therefore no warranties can be given as to their good working order

**MARSH &
PARSONS**