

Property ref: 149132

Palmer Street, Reading, RG1 3GY

£1,850 PCM

HASLAM'S
Lettings



A two bedroom apartment located in Reading town centre, superbly built by Berkeley Homes.
Reading Borough Council Tax Band D.
Broadband/Mobile Info: Connections available. For an indication of specific speeds and supply of Broadband and Mobile, we advise applicants go to the Ofcom website Broadband and Mobile Coverage Checker.

Available 09/07/2026

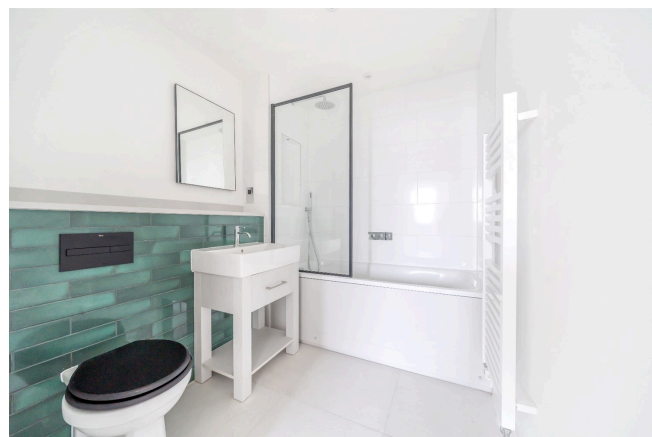
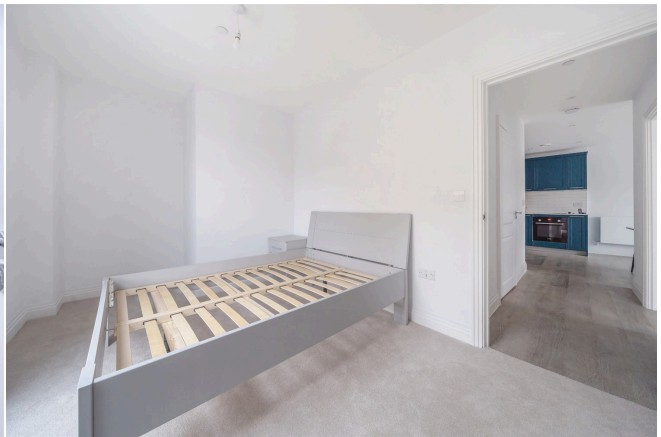
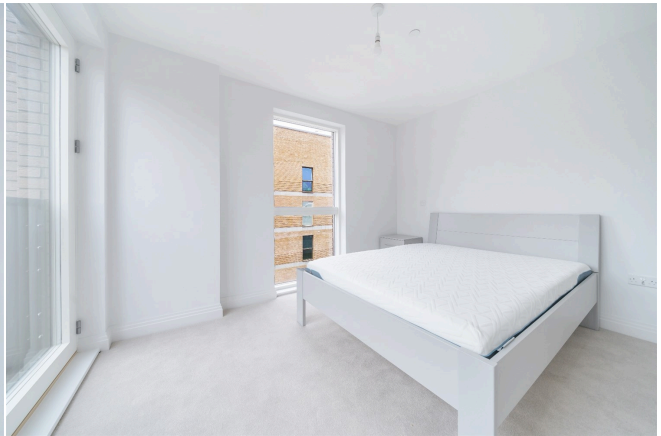
- Two double bedrooms with fitted wardrobes
- Bathroom with shower over the bath; Master with en-suite
- Fully fitted kitchen with appliances
- Sundry payment of £75pcm on top of the rent to cover hot water and heating via communal boiler
- EPC rating B; Furnished; Private balcony
- No parking; Managed by HASLAM'S

*Fees For Assured Periodic Tenancies: when you rent a property from us you will be required to pay a sum equivalent to one weeks' rent for a holding deposit. Upon successful application, this amount will be off set against your first months' rent. You will also be required to pay a security deposit equivalent to 5 weeks' rent which will be held and protected in line with Deposit legislation. For more information about our fees please visit: www.haslams.net
Fees for all other tenancies (Non Housing Act Tenancies / Company Lets): when you rent a property from us we will charge you a one-off fee per property. This charge is the equivalent of 15 days of the monthly rental charge (+VAT) with a minimum fee of £450 (inc.VAT) up to a maximum of £650 (inc.VAT). Other fees may apply depending on your circumstances.

0118 960 1055

lettings@haslams.net www.haslams.net

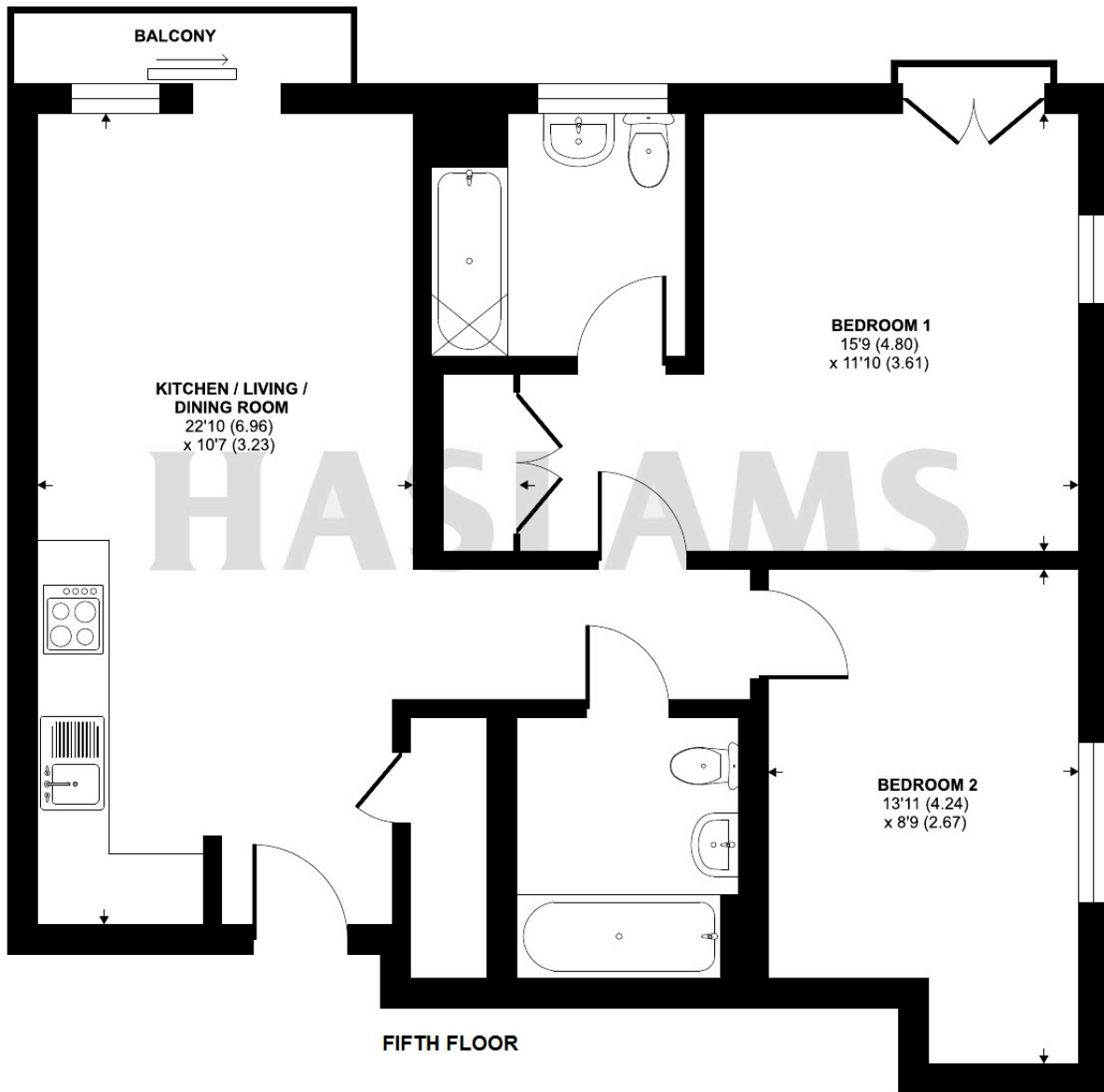
Haslams Estate Agents Ltd, 159 Friar Street, Reading, Berkshire, RG1 1HE



Palmer Street, Reading, RG1

Approximate Area = 708 sq ft / 66 sq m

For identification only - Not to scale



Floor plan produced in accordance with RICS Property Measurement Standards incorporating International Property Measurement Standards (IPMS2 Residential). © n/checom 2022. Produced for Haslams. REF: 930432