

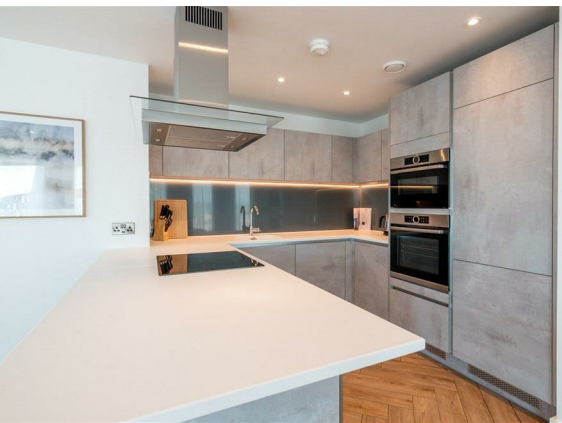
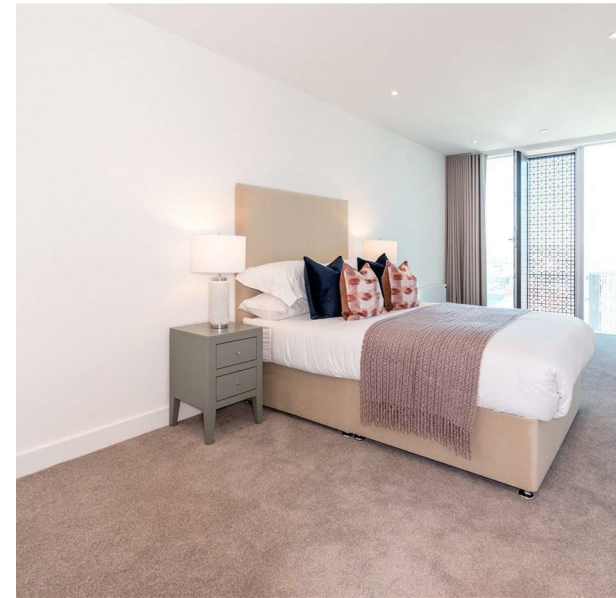
Flat 4005, 141 Chester Road, Manchester, M15 4ZN

Asking Price £595,000

Council Tax Band: New Build



ORLANDO REID



Orlando Reid proudly presents this exceptional 40th-floor apartment in Elizabeth Tower, ideally situated in the heart of Manchester and offering residents access to the city's finest amenities. Conveniently located just 0.3 miles from Deansgate tram and train links, with bus stops a mere 0.1 miles away, transportation options are easily accessible. The nearby A56, only 0.1 miles away, provides effortless access for vehicles entering and leaving the city centre.

Located within the New Jackson Area, this vibrant new neighbourhood in southwest Manchester city centre is one of the most desirable places to live in the city. It features beautifully designed residences, luxurious facilities, and extensive public green spaces connected by pedestrian and cycle pathways — perfect for outdoor leisure and relaxation. The area also hosts a range of local amenities including the General



St Johns Court 19b Quay Street, Manchester, M3 3HN

01616760099

manchester@orlandoreid.co.uk

<https://www.orlandoreid.co.uk/manchester/>

