

SNELLERS

ESTATE AGENTS



Whitton Road, TW1

£1,250,000

An immaculately presented semi-detached home in central location, offering spacious and versatile accommodation throughout. Combining style, comfort, and convenience, this superb home is ready to move straight into.



This fantastic four/five bedroom 1930's semi detached house is a wonderful family home, benefitting from having a stylish open plan kitchen / family room, a stunning front reception room, two bathrooms, a landscaped garden perfect for entertaining and off street parking to the front for several cars.

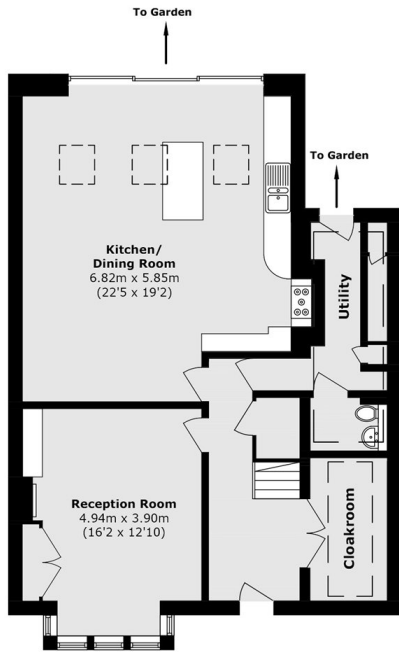
Whitton Road is located just a few hundred yards from Twickenham mainline station where there is a fast link to London Waterloo. There are a number of excellent schools in the area and the high street is nearby where you will find a vast array of shops, bars and restaurants.

- Immaculate Condition • Semi Detached • Off Street Parking •
- Central Location • Four/Five Bedrooms • Landscaped Garden •

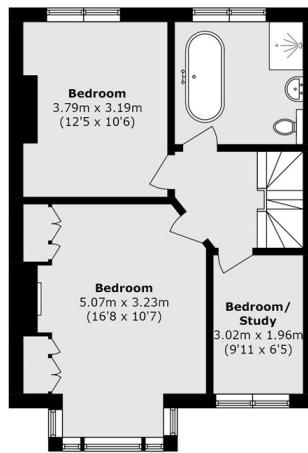


SNELLERS

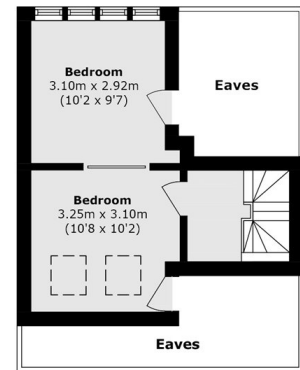
ESTATE AGENTS



Ground Floor



First Floor



Second Floor

Total Area (approx.): 159.5 sq. m (1716.8 sq. ft)
(Excluding Eaves)

Snellers Twickenham Sales
64-66 Heath Road
Twickenham
TW1 4BX
020 8892 5555
twickenhamsales@snellers.co.uk

Energy Rating: We aim to make our particulars both accurate and reliable. However they are not guaranteed; nor do they form part of an offer or contract. If you require clarification on any points then please contact us, especially if you're traveling some distance to view. Please note that appliances and heating systems have not been tested and therefore no warranties can be given as to their good working order