

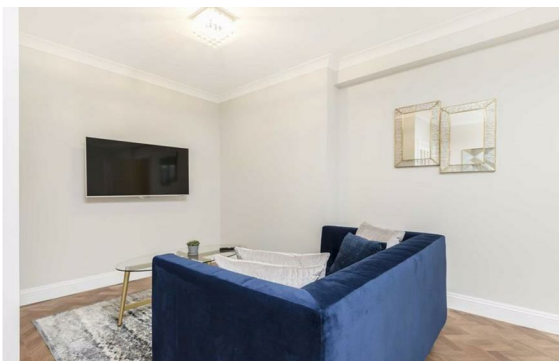


Park Crescent, Marylebone, London, W1B

Rent £950 Per Month

1 Bed | 1 Bath | 1 Reception

Please call us on 020 7724 2233 or email us info@newingtonstates.com to book a viewing.



Newingtons are delighted to present you this one bedroom apartment in this beautiful portered block. The property benefits from bright and spacious reception room, a fully integrated kitchen, spacious bedroom with built in storage and a modern bathroom, also access to communal gardens. The property benefits from having parquet flooring throughout.

Located in Regent's Park, moments from Marylebone High Street. Park Crescent is nestled in one of London's most sought-after areas. Residents benefit from an abundance of amenities in both Marylebone and Fitzrovia from charming boutiques, stylish cafes, and historical museums. Regent's Park Underground Station (Bakerloo Line) is on the doorstep with immediate access to the city. EPC RATING: C

Energy Efficiency Rating: C

Agents Note: Whilst every care has been taken to prepare these particulars, they are for guidance purposes only. All measurements are approximate and are for general guidance purposes only and whilst every care has been taken to ensure their accuracy, they should not be relied upon and potential buyers/tenants are advised to recheck the measurements.

NEWINGTON
— ESTATES —

60 Upper Montagu Street

London

W1H 1SN

020 7724 2233

info@newingtonstates.com

<http://www.newingtonstates.com>