



CHATSWORTH ROAD, NW2

£550,000

This superb, two-bedroom apartment is situated on the top floor of charming period conversion, comprising a spacious reception room with original fireplace, separate kitchen, two large double bedrooms and a

Large Two Bedroom Apartment High Ceilings

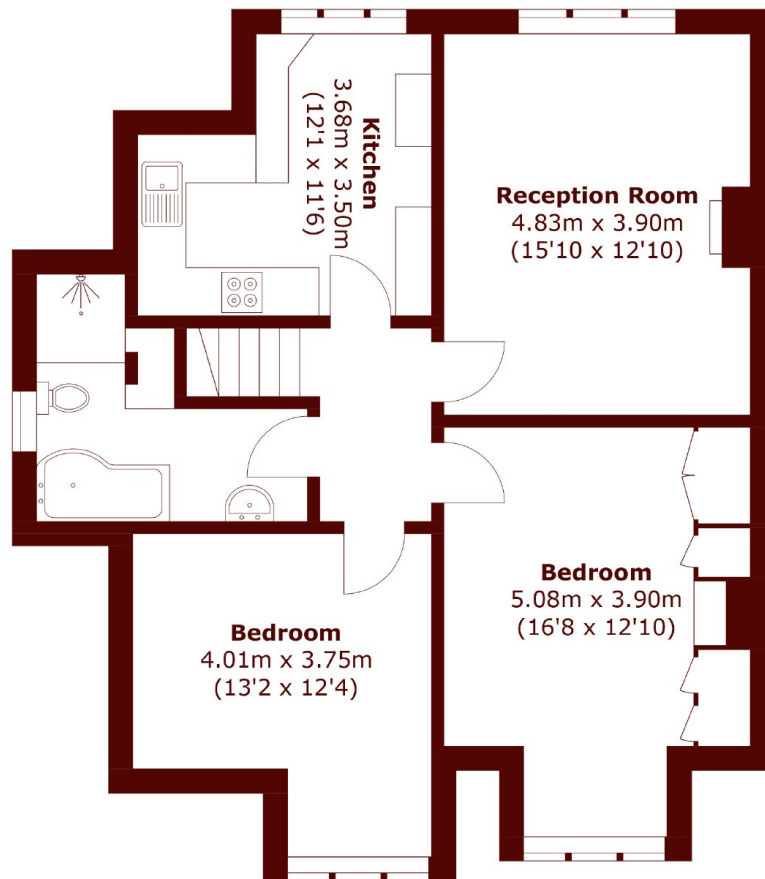
Top Floor Flat

Arranged Over 810sqft

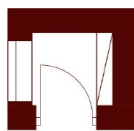
Lots Of Natural Light

Superb Location

STEP INSIDE CHATSWORTH ROAD



Second Floor



First Floor

Total area (approx.): 75.3 sq. m (810.4 sq. ft)

Willesden Green
020 8451 0420

Energy Rating: D We aim to make our particulars both accurate and reliable. However, they are not guaranteed; nor do they form part of an offer or contract. If you require clarification on any points then please contact us, especially if you're traveling some distance to view. Please note that appliances and heating systems have not been tested and therefore no warranties can be given as to their good working order

**MARSH &
PARSONS**