



EDEN MIDCALF
— SALES & LETTINGS —

OFFERS IN THE REGION OF
£95,000
Westley Court
Kidderminster, DY10 3RT

PROPERTY SUMMARY

An attractively presented one bedroom first floor apartment for the over 50s, set within approximately four acres of beautifully landscaped grounds and enjoying delightful views towards the Staffordshire & Worcestershire Canal and surrounding countryside. The property offers well-appointed, generously proportioned accommodation that is ready to move into and is available with no upward chain. EPC=C

1



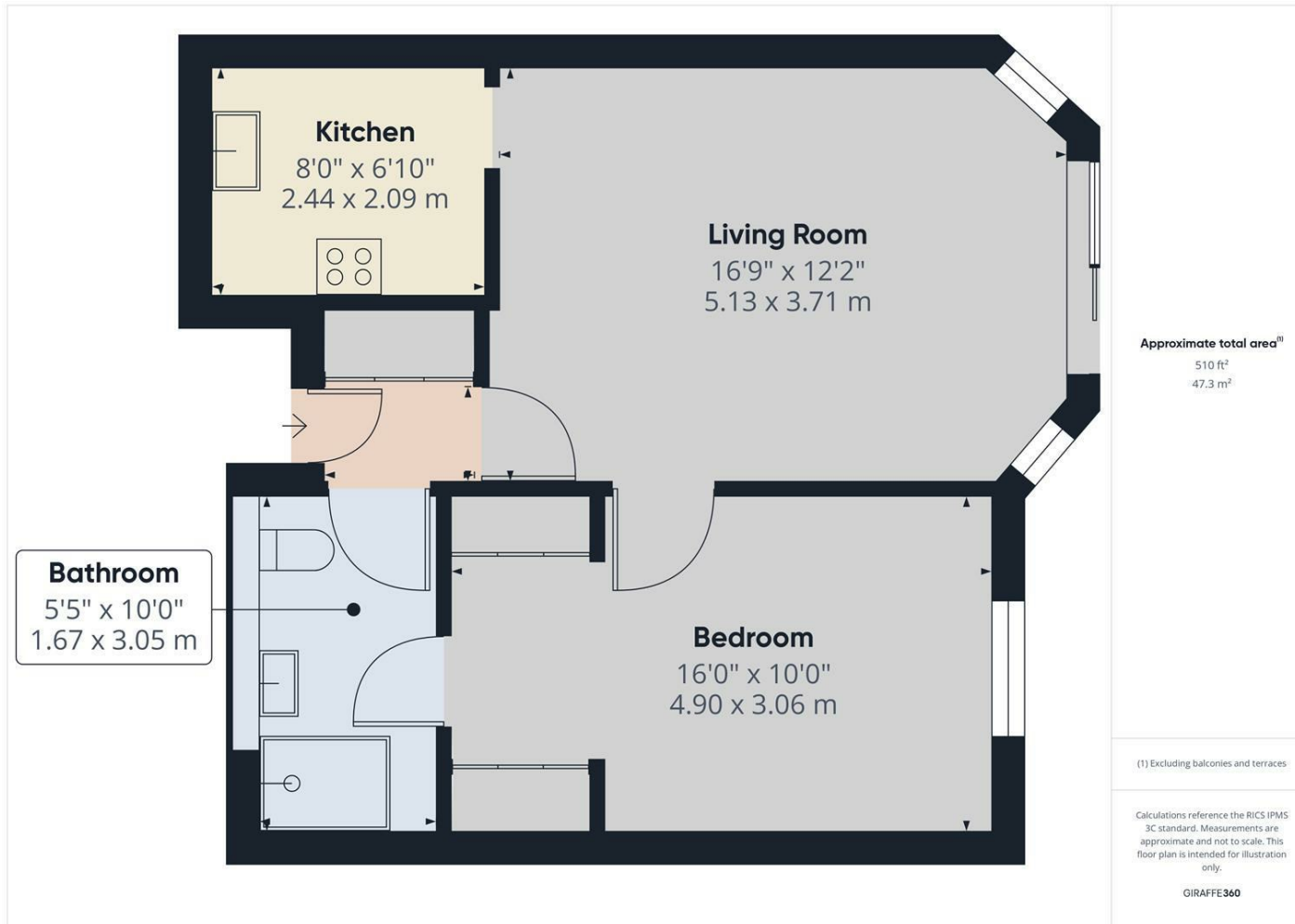
1



1







LOCAL AUTHORITY

TENURE

Leasehold

COUNCIL TAX BAND

D

VIEWINGS

By prior appointment only

Energy Efficiency Rating		Current	Potential
Very energy efficient - lower running costs			
(92 plus) A			
(81-91) B			
(69-80) C		73	78
(55-68) D			
(39-54) E			
(21-38) F			
(1-20) G			
Not energy efficient - higher running costs			
England & Wales		EU Directive 2002/91/EC	

Agents Note: Whilst every care has been taken to prepare these particulars, they are for guidance purposes only. All measurements are approximate and are for general guidance purposes only and whilst every care has been taken to ensure their accuracy, they should not be relied upon and potential buyers/tenants are advised to recheck the measurements.

EDEN MIDCALF
SALES & LETTINGS

28 High Street
Kinver
DY7 6HF

01384 878000

<https://www.edenmidcalf.co.uk/>
us/