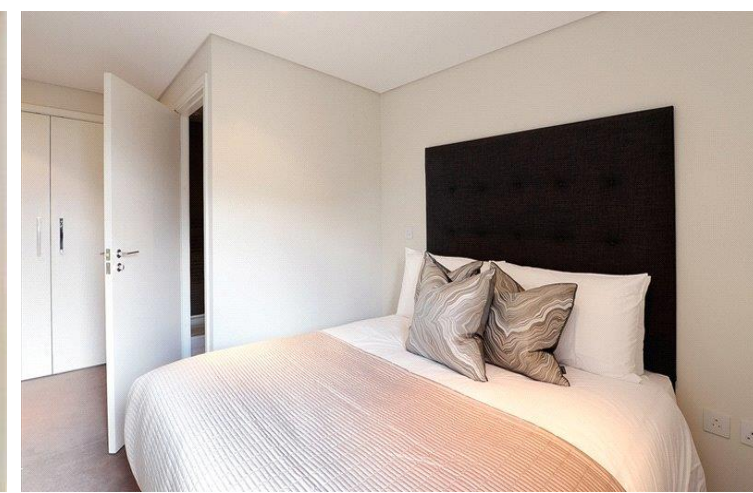




Merchant Square
East Harbet Road, W2

CHESTERTONS





This amazing apartment finds itself on the sixth floor of this ideally located building in the Paddington Basin overlooking the Water. The building has a dedicated building manager, a concierge, lift service and secure underground parking.

- Three bedrooms
- Sixth floor
- Lift Access
- Porter
- Near Paddington Station

£1,495 per week (£6,478.33 pcm)


Additional tenant charges apply (fees apply to non-AST tenancies only)

Tenancy Agreement Fee: £300

References per Tenant/Guarantor: £60

Inventory check (approx. £100 – £250 inc. VAT)

[chestertons.com/property-to-rent/applicable-fees](https://www.chestertons.com/property-to-rent/applicable-fees)

Energy Efficiency Rating		Current	Potential
Very energy efficient - lower running costs			
(92-100) A			
(81-91) B		85	87
(69-80) C			
(55-68) D			
(39-54) E			
(21-38) F			
(1-10) G			
Not energy efficient - higher running costs			
England, Scotland & Wales		EU Directive 2002/91/EC	

Tenure: To be advised

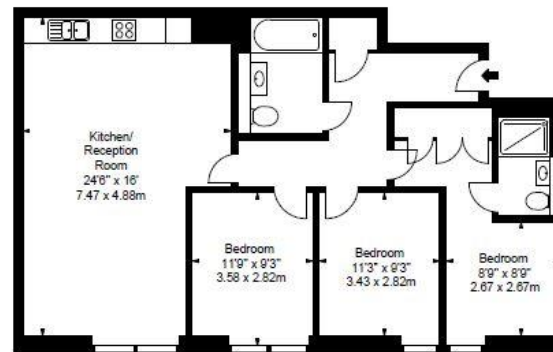
Furnished

Chestertons Hyde Park & Marylebone Lettings

40 Connaught Street
Hyde Park & Marylebone
London
W2 2AB

lettings.hydepark@chestertons.com

02072985950



FLAT 609 4B MERCHANT SQUARE EAST LONDON W2	Approx Gross Internal Area* 960 Sq Ft - 89.18 Sq M	<div><div>Surveyed and Created By</div><div>BKR</div><div><small>Burreyhill House, 3-7 Burreyhill Road, London, SW15 2JG</small></div><div><small>Tel: 0844 267 2022 Fax: 0844 267 2024 info@bkrflourish.co.uk www.bkrflourish.co.uk</small></div><div><small>© BKR 2016</small></div></div>
Sixth Floor		

* As Defined by RICS - Code of Measuring Practice

Illustration For Identification Purposes Only. Not to Scale
All Calculations Include Any/All Areas Under 1.6m Head Height.

Chesterton Global Ltd trading as Chestertons for themselves and for the vendor of this property whose agents they are, give notice that (i) these particulars do not constitute any part of an offer or contract, (ii) all statements contained within these particulars are made without responsibility on the part of Chestertons or the vendor, (iii) whilst made in good faith, none of the statements contained within these particulars are to be relied upon as a statement or representation of fact, (iv) any intending purchasers must satisfy themselves by inspection or otherwise as to the correctness of each of the statements contained within these particulars, (v) the vendor does not make or give either Chestertons or any person in their employment any authority to make or give representation or warranty whatsoever in relation to this property. Wide angle lenses may be used. ©Copyright Chestertons | Chesterton Global Ltd | Registered Office 40 Connaught Street, Hyde Park, London W2 2AB Registered Company Number 05334580.



This paper is
100% recyclable