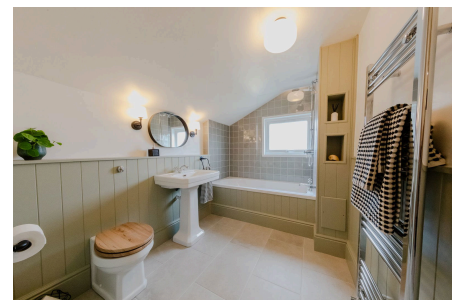


St. Mary Street, New Bradwell, Milton Keynes, MK13

Offers Over £280,000 (Guide Price £280,000 to £290,000)

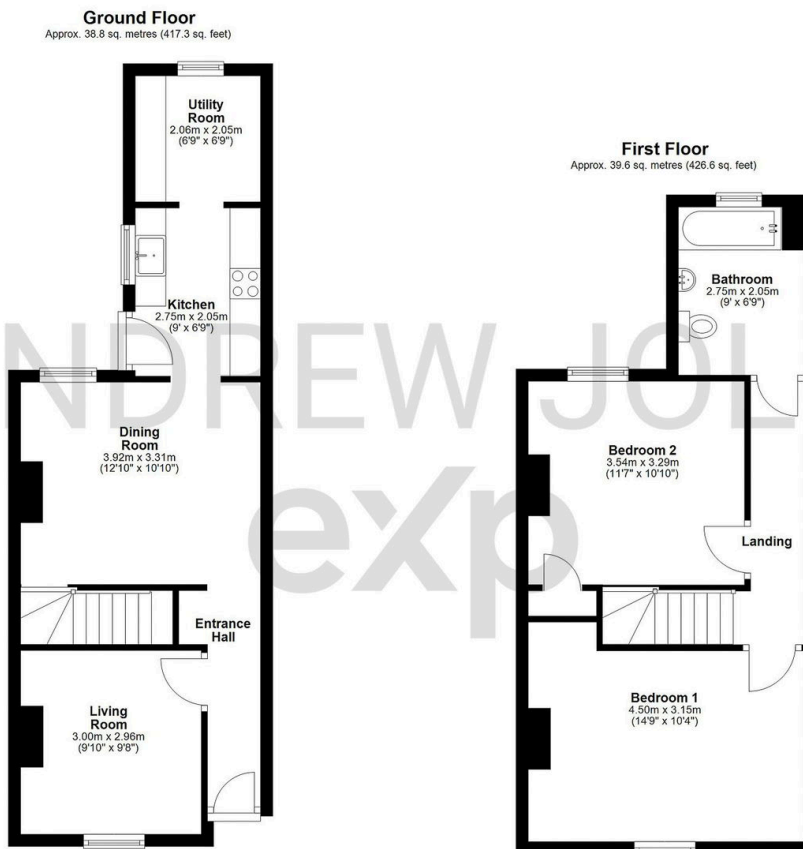
🛏️ 2 🚿 1 🛋️ 2



A beautifully renovated two double bedroom Edwardian home in the heart of New Bradwell, thoughtfully redesigned by the current owners to create a stunning country-cottage style interior with stripped wood flooring, a beautifully refitted kitchen and a stylish bathroom.

Key Features

- Edwardian era home dating back to early 1900s
- Council Tax Band - B
- 78m² = 844 Sq Ft
- Recently refitted kitchen
- No onward chain
- Current Owners Since 2015
- Approx. monthly utility bills = £130.00
- Beautifully presented throughout
- Recently refitted bathroom
- REF: AJ1276



Total area: approx. 78.4 sq. metres (843.9 sq. feet)

Floor plans are for illustrative purposes only and should be treated as general guidance. Dimensions are approximate to give a general indication of the floor layout only. Plan produced using PlanUp.