



Price
£275,000

Freehold

3x  1x  1x 

**Love Street Close, Herne
Bay, Kent, CT6**

OVER 60?

Secure this property
for up to **59% less!**

Wards
Helping you move forwards



Main features

- Deceptively spacious mid terrace
- Central heating, close to shops
- Large lounge with separate kitchen/diner
- Block paved driveway with electric charging point
- Low maintenance rear garden

Accommodation

GROUND FLOOR

Porch
 Entrance Hallway
 Cloakroom
 Kitchen: 15'6 x 7'10 (4.73m x 2.39m)
 Lounge: 17'3 x 10'8 (5.26m x 3.25m)

FIRST FLOOR

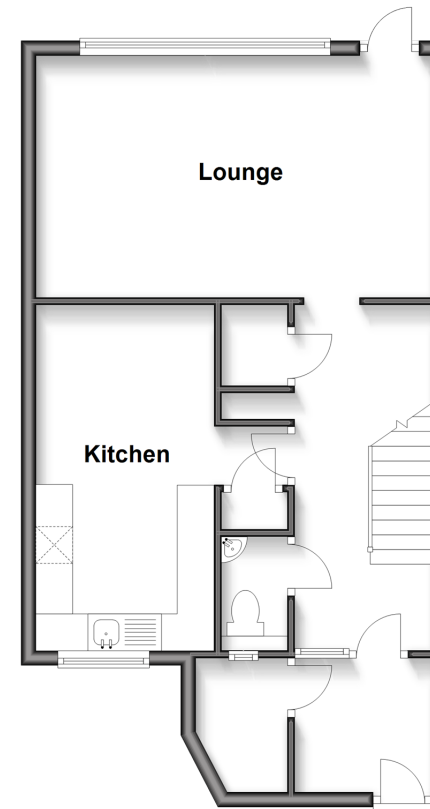
Landing
 Bedroom 3: 9'9 x 8'9 (2.97m x 2.67m)
 Bedroom 1: 12'6 x 8'0 (3.81m x 2.44m)
 Bedroom 2: 13'10 x 8'9 (4.22m x 2.67m)
 Bathroom

OUTSIDE

Driveway
 Rear Garden

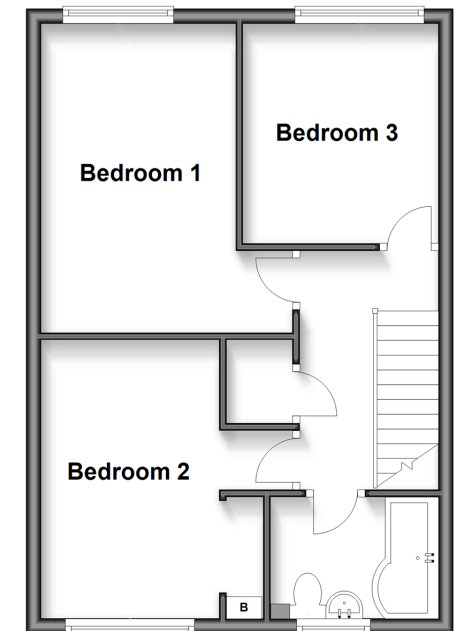
Ground Floor

Approx. 49.6 sq. metres (534.0 sq. feet)



First Floor

Approx. 43.6 sq. metres (469.1 sq. feet)



Call Herne Bay - 01227 361226 ■ wardsofkent.co.uk

- Legal advice should be taken to verify fixtures/fittings, planning, alterations and/or lease details
- Appliances & services are untested, dimensions are approximate and floor plans are not to scale
- Through a Homewise Home For Life Plan people aged 60+ can secure this property for up to 59% less, by purchasing a Lifetime Lease.



11238808/20250516/GS/GG