



Craven Park Road, NW10

£300,000

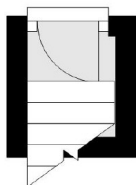
A spacious one bedroom flat in a purpose built development, benefitting from having its own entrance and access to a private garden. The property occupies the first and second floors, with a separate kitchen, a garage, and is located in a cul-de-sac.

Craven Park is close to the shops, cafes and amenities of Harlesden, with Roundwood Park nearby. Transport links include a number of bus connections, and the nearest stations being Harlesden (Bakerloo & Overground) and Willesden Junction (Bakerloo & Overground).

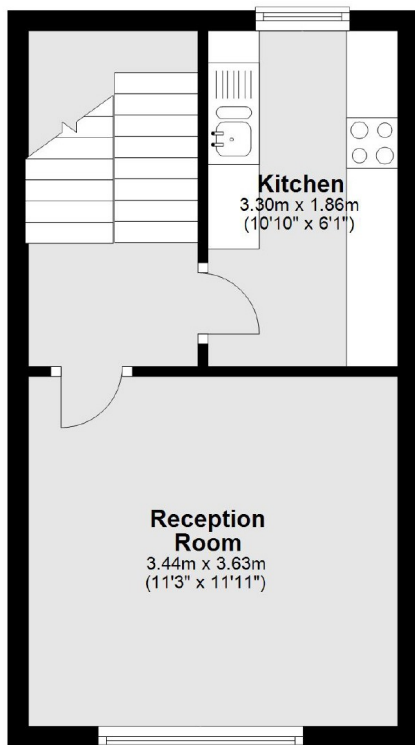
Features

- One Bedroom
- Own Entrance
- Split-Level
- Garden
- Garage
- Close To Local Amenities

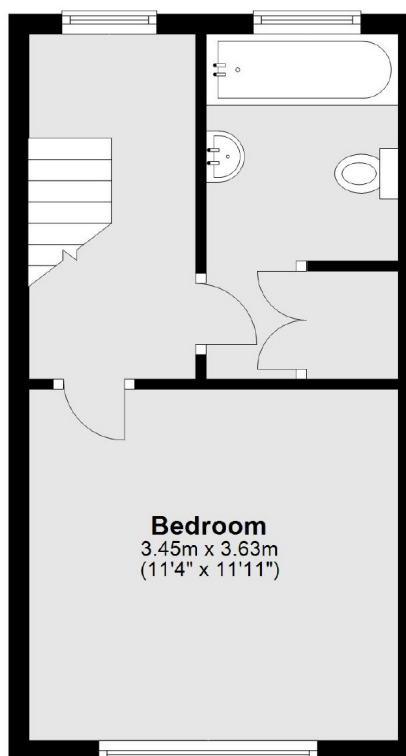
Craven Park Road, London, NW10



First Floor



Second Floor



Total area: approx. 50.8 sq. metres (547.3 sq. feet)