



The Woodlands, SE19 | £300,000

020 8702 9333

crystalpalace@pedderproperty.com

pedder
We live local



In General

- Two double bedroom ground floor apartment
- Quiet leafy surroundings
- Residents parking
- No onward chain
- Spacious reception room
- Direct access to decked kitchen
- Long lease

In Detail

A two double bedroom ground floor apartment forming a quiet, tucked away art-deco style development in Crystal Palace.

This property offers a spacious and light-filled reception room with double doors opening onto a decked terrace — perfect for relaxing or entertaining. The separate kitchen provides ample worktop and storage space, ideal for those who enjoy cooking or hosting, while the modernised bathroom combines both style and practicality. The property also benefits from fitted hallway storage.

Additional highlights include a long lease, well-maintained communal grounds, and residents parking.

Conveniently located, the property is well served by nearby West Norwood and Gipsy Hill railway stations, offering direct links into Central London, while several bus routes provide easy access to Streatham and Brixton Hill.

Offered to the market with no onward chain, this apartment represents an excellent opportunity for first-time buyers, downsizers, or investors seeking a home in a desirable and peaceful setting close to Crystal Palace's vibrant amenities, independent cafés, and green open spaces.

No onward chain.

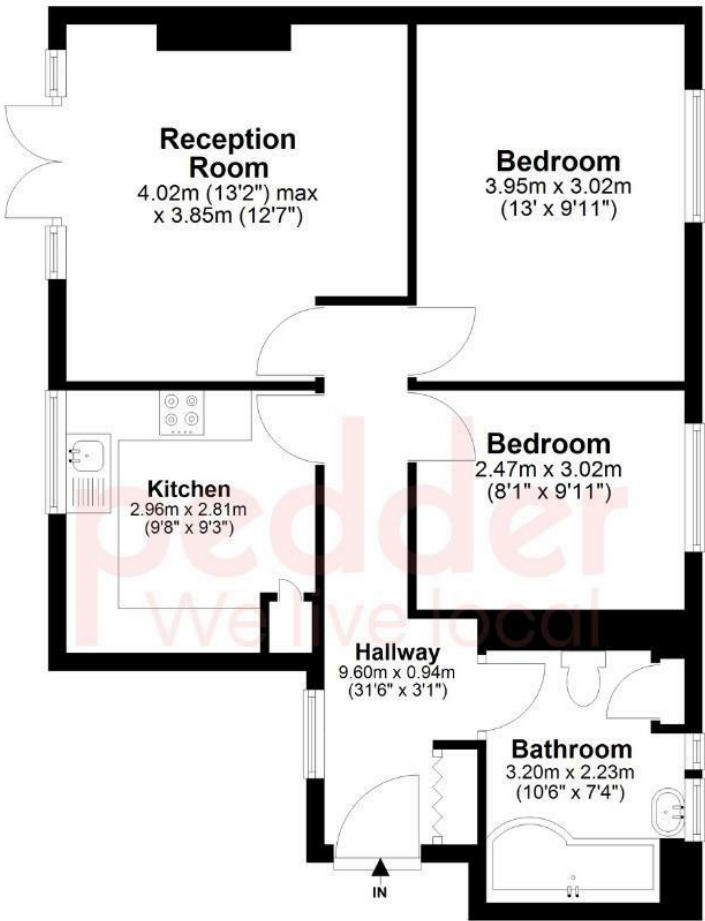
EPC: C | Council Tax Band: A | Lease: 994 Years remaining | SC: £2448.01pa | GR: £50pa | BI: TBC



Floorplan

Ground Floor

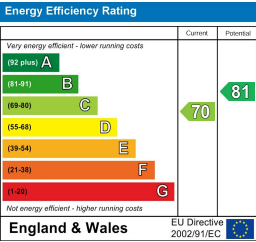
Approx. 62.3 sq. metres (671.1 sq. feet)



Total area: approx. 62.3 sq. metres (671.1 sq. feet)

Copyright www.pedderproperty.com 2024. These plans are for representation purposes only as Defined by RICS - Code of Measuring Practice. Not drawn to scale. windows and door measurements are approximate. please check dimensions, shapes and compass bearings before making any decisions reliant upon them.

Plan produced using PlanUp.



Pedder Property Ltd trading as Pedder for themselves and for the vendor/landlord of this property whose agents they are, give notice that (1) these particulars do not constitute any part of an offer or contract, (2) all statements contained within these particulars are made without responsibility on the part of Pedder or the vendor/landlord, (3) whilst made in good faith, none of the statements contained within these particulars are to be relied upon as a statement of representation or fact, (4) any intending purchaser/tenant must satisfy him/herself by inspection or otherwise as to the correctness of each of the statements contained within these particulars, (5) the vendor/landlord does not make or give either Pedder or any person in their employment any authority to make or give representation or warranty whatsoever in relation to this property.