



Parkstead Road, SW15

£675,000

Dexters



Parkstead Road, SW15

A beautifully presented two bedroom family home offering approximately 788 sq ft of bright and well-balanced living space, ideally located on a sought-after residential road in West Putney.

Having been fully renovated by the current owners. The ground floor features a separate reception room and a stunning extended kitchen/dining room with contemporary fittings, vaulted ceilings, skylights and large sliding doors opening directly onto a private rear garden, creating an exceptional space for everyday living and entertaining. Upstairs are two well-proportioned double bedrooms and a modern family bathroom.

Transport links are excellent, with Putney Mainline Station providing regular services to London Waterloo and East Putney Underground Station (District Line) offering swift access into Central London. A number of local bus routes also serve the area, making this an ideal location for commuters and families alike.

Features

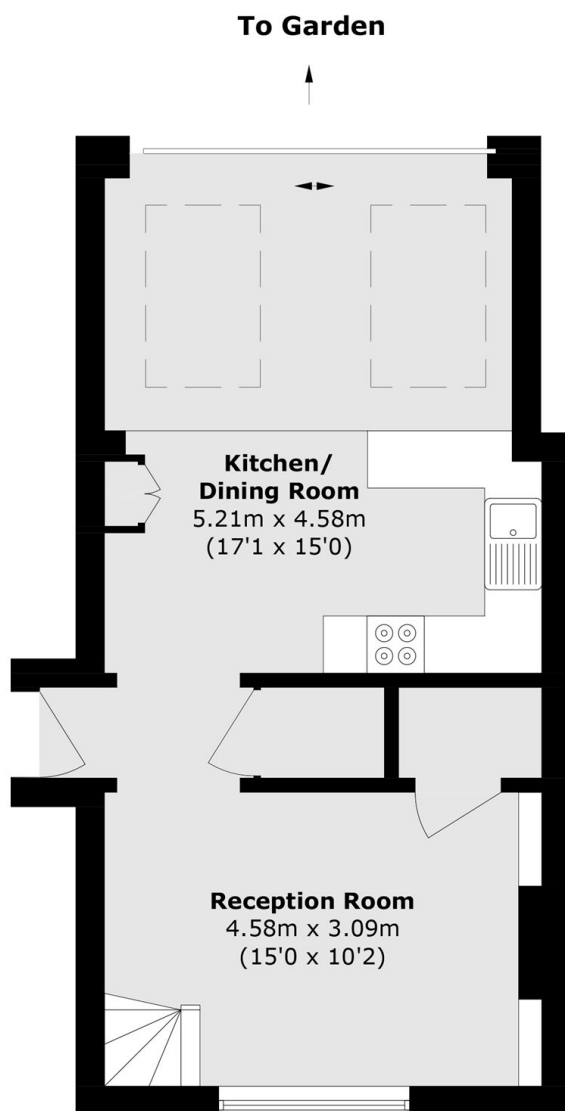
- Chain Free
- Extended
- Private Garden
- Freehold
- 787 sq. ft
- Two Bedrooms



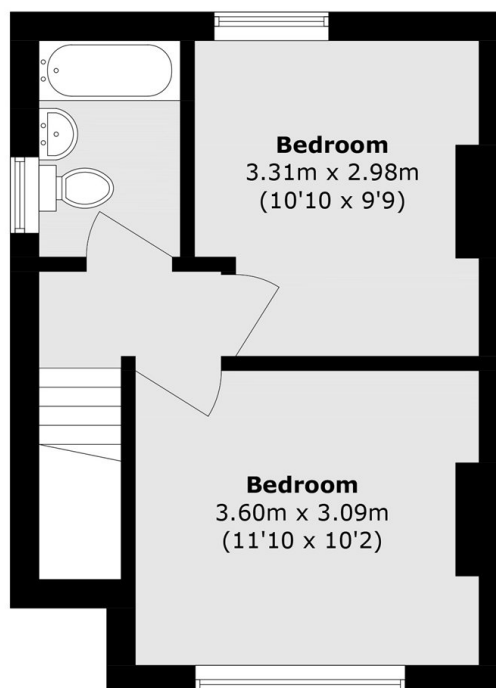




Parkstead Road, London, SW15



Ground Floor



First Floor

Total area (approx.): 73.2 sq. m (787.9 sq. ft)