



## St. Mark's Grove, SW10

£450,000

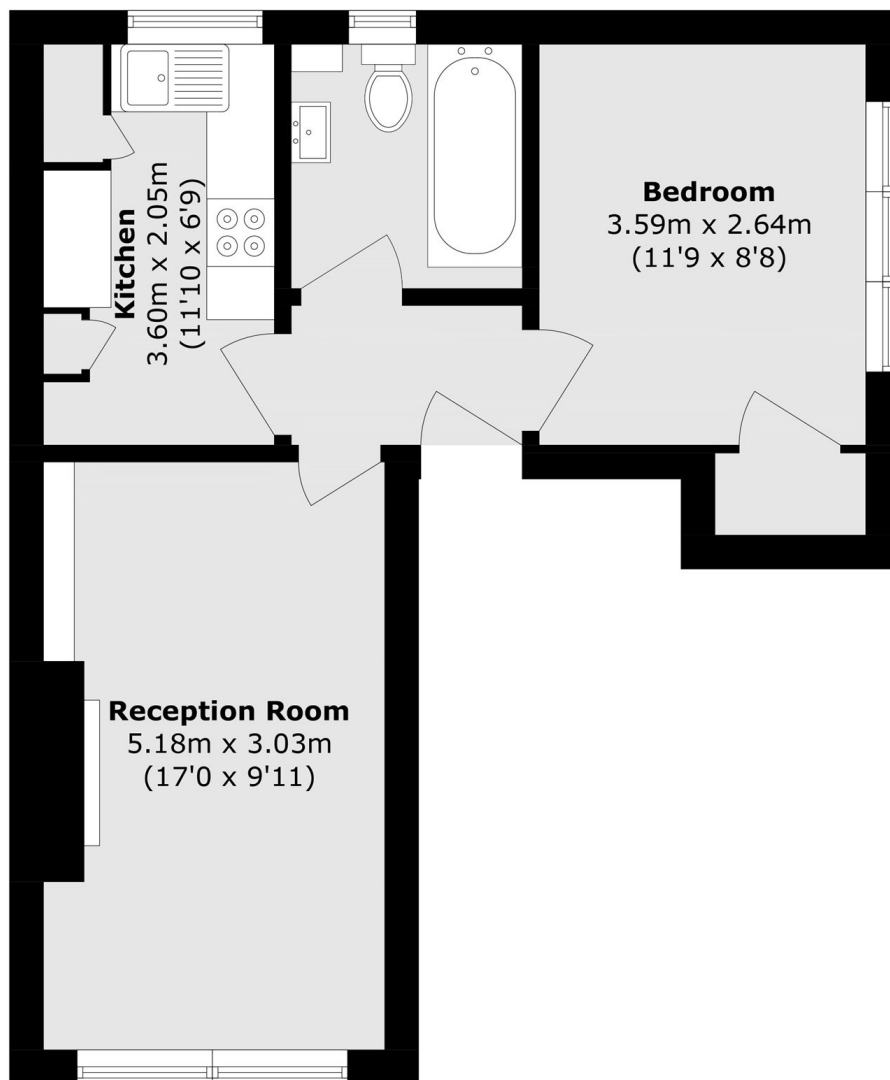
A well presented one bedroom apartment is set on the first floor and is ideally located for access to Fulham Broadway Underground Station as well as the amenities of the Kings Road and Fulham. The property has a bright reception room, double bedroom, bathroom with shower over bath and fully fitted kitchen.

St Marks Grove is a well presented purpose built flat situated within a small development off the Fulham Road. It is ideally located close to Fulham Broadway underground station and Kings Road.

### Features

- One Bedroom
- One Bathroom
- Great Transport Links
- First Floor
- Built-In Storage
- Great Location

# St. Mark's Grove, London, SW10



Total area (approx.): 43.3 sq. m (466.0 sq. ft)