



Burns Street | Cannock | WS11 6DR
Offers In The Region Of £225,000



Summary

**** EXTENDED SEMI DETACHED HOME ** IN NEED OF IMPROVEMENTS ** FOUR BEDROOMS ** CLOSE TO LOCAL SHOPS AND SCHOOLS ** LARGE GARDEN ** LARGE GARAGE WITH INSPECTION PIT ** THROUGH LOUNGE DINER ** L SHAPED KITCHEN ** VIEWING VIA AGENT ON 01543 468846 ****

Webbs Estate Agents are pleased to offer for sale a large extended semi-detached home in the heart of the high street offering easy access to schools, shops, transport links via road and rail.

In brief consisting of an entrance hallway, a large through lounge diner, L shaped kitchen with a door to the veranda leading to the large rear garden. To the first floor there are four bedrooms and a large bathroom, externally the property has a large enclosed rear garden, ample parking is provided by a multi-car garage with an inspection pit and a driveway to the front of the property.

This property needs renovation and viewings are advised.

Key Features

- EXTENDED SEMI DETACHED HOME
- LARGE BATHROOM
- CLOSE TO LOCAL SHOPS
- LARGE THROUGH LOUNGE DINER
- CLOSE TO LOCAL SCHOOLS
- FOUR BEDROOMS
- L SHAPED KITCHEN
- IN NEED OF REFURBISHMENT
- MULTI CAR GARAGE WITH INSPECTION PIT
- VIEWING NEEDED

Rooms and Dimensions

DRAFT DETAILS

ENTRANCE HALLWAY

THROUGH LOUNGE DINER

25'4" x 10'11" (7.723 x 3.328)

L SHAPED KITCHEN DINER

17'1" x 15'2" (5.223 x 4.626)

VERANDA

GUEST WC

LANDING

BEDROOM ONE

19'2" x 9'6" (5.858 x 2.919)

BEDROOM TWO

12'0" x 10'0" (3.665 x 3.060)

BEDROOM THREE

16'1" x 8'6" (4.920 x 2.596)

BEDROOM FOUR

12'3" x 7'9" (3.753 x 2.387)

LARGE BATHROOM

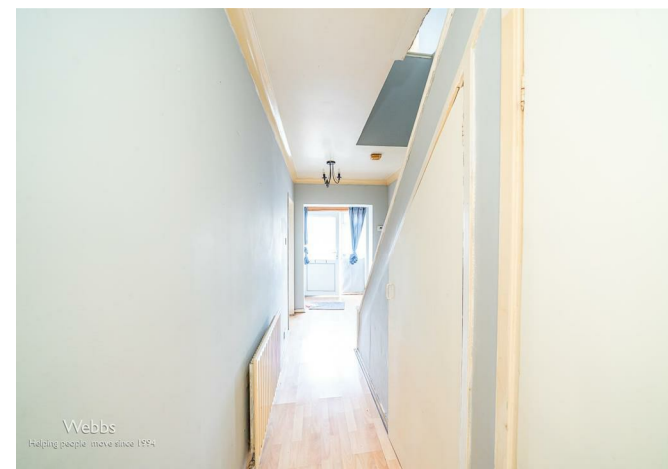
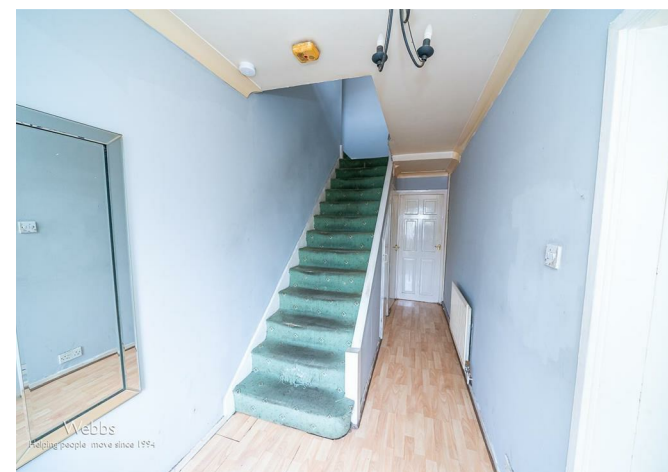
15'8" x 6'10" (4.784 x 2.095)

5 CAR GARAGE WITH INSPECTION PIT

ENCLOSED REAR GARDEN

FRONT DRIVEWAY

Identification checks - C





Webbs Estate Agents - endeavour to maintain accurate depictions of properties in Virtual Tours, Floor Plans and descriptions, however, these are intended only as a guide and purchasers must satisfy themselves by personal inspection.

