



Rutland Road, TW2

£650,000

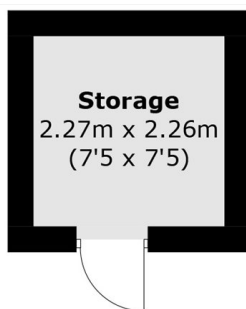
Offers Over £650,000. This three double bedroom semi-detached home has fantastic potential to be remodelled and modernised to your own style. There is off street parking to the front, downstairs w.c, integral garage, private courtyard garden to the rear and is offered with no onward chain.

Rutland Road is tucked away off Staines Road, between Fourth Cross Road and Fifth Cross Road and is 0.5 miles from Twickenham Green. Rutland Road is in catchment for many local outstanding schools and is a short walk from the popular local parks and local amenities.

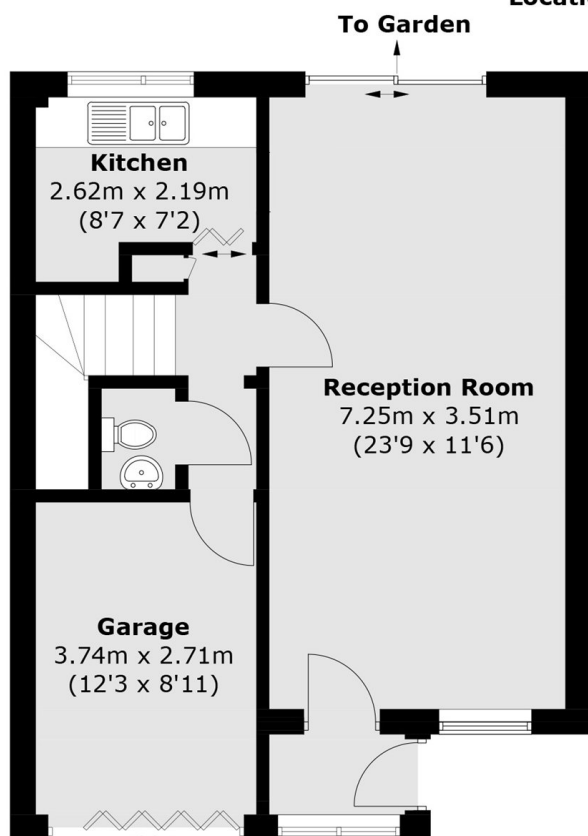
Features

- Three Double Bedrooms
- Semi Detached Home
- Downstairs WC
- Off Street Parking
- Modernisation Required
- Solar Panels

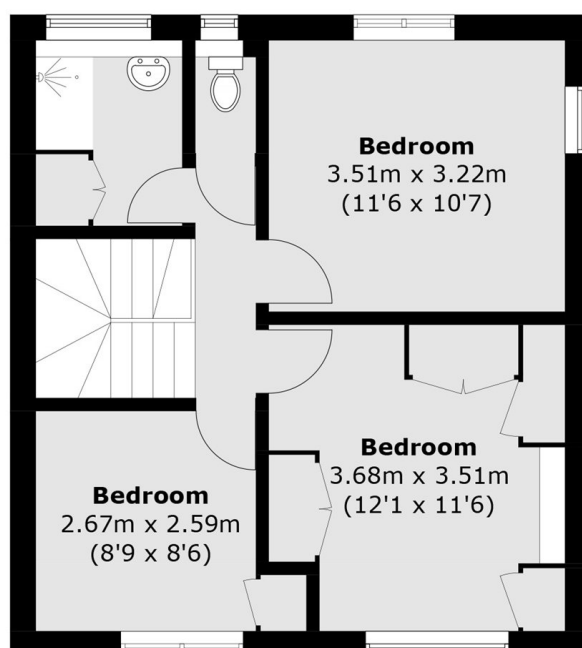
Rutland Road, Twickenham, TW2



(Not Shown In Actual
Location / Orientation)



Ground Floor



First Floor

Total area (approx.): 95.9 sq. m (1,032.2 sq. ft)

Storage (approx.): 5.2 sq. m (56.0 sq. ft)