

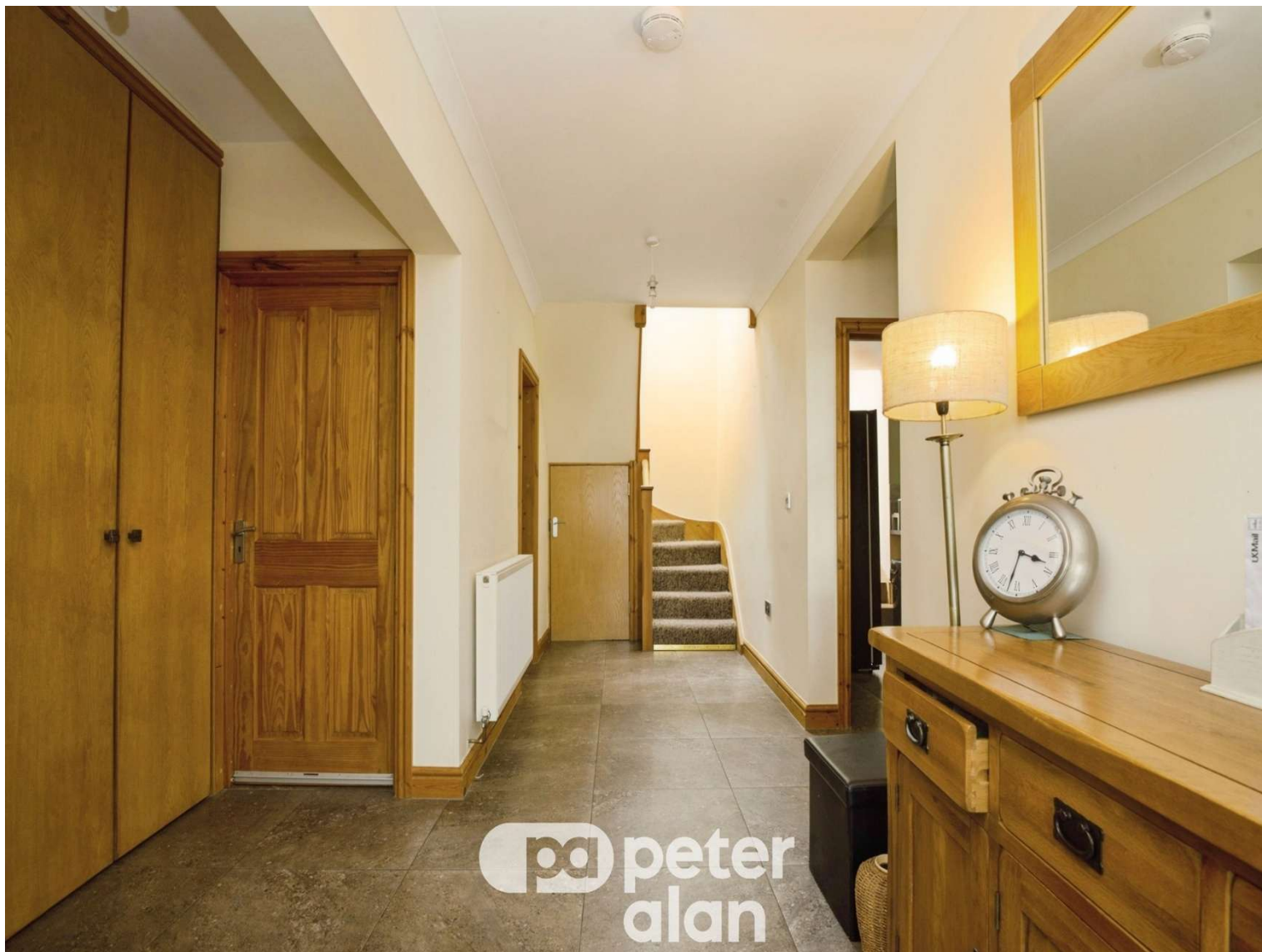


Ty Cwtch Stoney Road, £470,000

- Five bedroom individually designed self-build home
- Garage and driveway parking for multiple vehicles
- Elevated position with stunning panoramic valley views
- Two generous reception rooms
- Principal bedroom with en-suite
- Ground floor WC
- Council tax: F
- EPC Rating: C

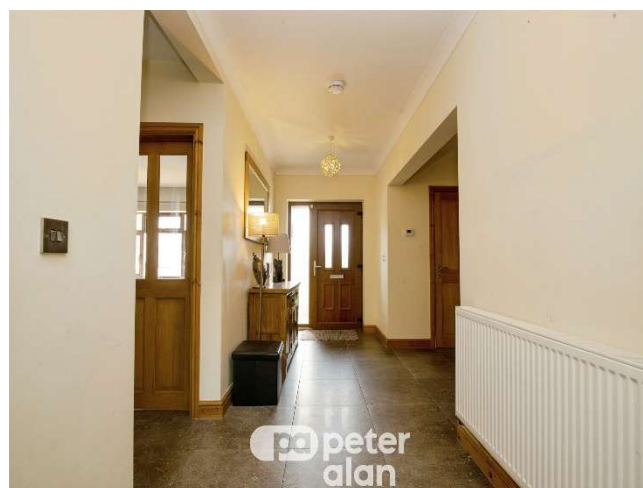


 5  3  3



About the property

An impressive five-bedroom home offering spacious accommodation, including two reception rooms, a large modern kitchen, and two en-suite bedrooms. Boasting stunning valley views, a garage, and ample parking for multiple vehicles, this exceptional property is perfect for modern family living.





Accommodation

Hallway

Wc

Garage

22' x 11' 10" (6.71m x 3.61m)

Lounge

16' 8" x 13' 7" (5.08m x 4.14m)

Kitchen

16' 9" x 15' 3" (5.11m x 4.65m)

Living Room

17' 2" x 10' 4" (5.23m x 3.15m)

Bedroom Four

16' 8" x 8' 4" (5.08m x 2.54m)

Bedroom One

16' 8" x 13' 7" (5.08m x 4.14m)

Ensuite

Bedroom Two

13' 2" x 10' (4.01m x 3.05m)

Ensuite

Bedroom Three

16' 8" x 13' 7" (5.08m x 4.14m)

Bedroom Five

14' 7" x 8' 6" (4.45m x 2.59m)

Floorplan



Total floor area 219.0 m² (2,357 sq.ft.) approx

This floor plan is for illustrative purposes only. It is not drawn to scale. Any measurements, floor areas (including any total floor area), openings and orientation are approximate. No details are guaranteed, they cannot be relied upon for any purpose and they do not form part of any agreement. No liability is taken for any error, omission or misstatement. A party must rely upon its own inspection(s). Powered by www.propertybox.io



Important Information

Note while we endeavour to make our sales details accurate and reliable, if there is any point which is of particular interest to you, please contact the office and we will be pleased to confirm the position for you. We have not personally tested any apparatus, equipment, fixtures, fittings or services and cannot verify they are in working order or fit for their purposes. Nothing in these particulars is intended to indicate that carpets or curtains, furnishings or fittings, electrical goods (whether wired or not). Gas fires or light fittings or any other fixtures not expressly included form part of the property offered for sale. This computer generated Floorplan, if applicable, is intended as a general guide to the layout and design of the property. It is not to scale and should not be relied upon for dimensions. Tenure: We cannot confirm the tenure of the property as we have not had access to the legal documents. The buyer is advised to obtain verification from their solicitor or surveyor.

Peter Alan Limited is registered in England and Wales under company number 2073153, Registered Office is Cumbria House, 16-20 Hockliffe Street, Leighton Buzzard, Bedfordshire, LU7 1GN. VAT Registration Number is 500 2481 05. For activities relating to regulated mortgages and non-investment insurance contracts, Peter Alan Limited is an appointed representative of Connells Limited which is authorised and regulated by the Financial Conduct Authority. Connells Limited's Financial Services Register number is 302221. Most buy-to-let

