





The Malt House, High Street, Fovant, Wiltshire, SP3 5JL

What 3 Words: ///galaxies.pitch.carpeted



Key Features

- Detached Chilmark Stone House
- Four Bedrooms
- Three Bathrooms
- Open Plan Kitchen/Dining/Family Room
- Formal Sitting Room
- Downstairs WC
- Delightful Garden

Tenure: Freehold | EPC Rating: E | Council Tax Band: E |

Services: Minas electricity, water & sewage

Location

The village of Fovant is located between Salisbury and Shaftesbury on the A30 in the Nadder Valley and is home to the renowned WW1 Military, Fovant Badges chalked in the down below Chiselbury Ring, an Iron Age Fort.

The village offers exceptional facilities with an active community and a village hall, shop, church, an excellent pub and a well regarded doctors surgery, as well as a number of footpaths leading to some of the finest walking in Nadder Valley.

There is a regular bus service which serves The Cathedral city of Salisbury with its comprehensive choice of schools as well as excellent shopping and recreational facilities which include a theatre, Everyman Cinema, arts centre, restaurants, pubs, clubs, supermarkets, dentists, doctors' surgeries, hairdressers, library, leisure centre and fitness gym. The city also has 5 Park & Ride services for ease of access into the city centre.

Tisbury 5m, Salisbury 10m, Shaftesbury 10m. Trains to London Waterloo: Tisbury (110 mins), Salisbury (85 mins).

Inside the Home

Situated in the heart of the highly sought-after Nadder Valley village of Fovant, this charming village house enjoys a wonderfully convenient position just a short stroll from the village pub, shop and doctors' surgery. Beautifully maintained by the present vendors, the property offers generous and well-balanced accommodation presented in excellent order throughout, whilst retaining a number of character features. The accommodation is surprisingly generous comprising a formal sitting room with log burner, an impressive kitchen/dining/family room ideal for modern living and entertaining, and a large reception hall which could easily be utilised as a study area. There is also a downstairs cloakroom. To the first floor are four bedrooms in total, three of which are doubles. Both the principal bedroom and bedroom two benefit from their own en suite facilities, whilst bedrooms three and four are served by a Jack and Jill shower room.

Outside Space

A particular feature of the property is the delightful southerly-facing garden, with paved patio, lawn and gravel area. Fully enclosed and partly walled backing onto the Fovant Brook, creating a peaceful and picturesque setting.

Agents note - In accordance with the Estate Agents Act 1979 – we need to advise the seller is an employee of Boatwrights

Shall We Book You in For a Viewing?

Strictly by appointment only via Boatwrights Estate Agents.

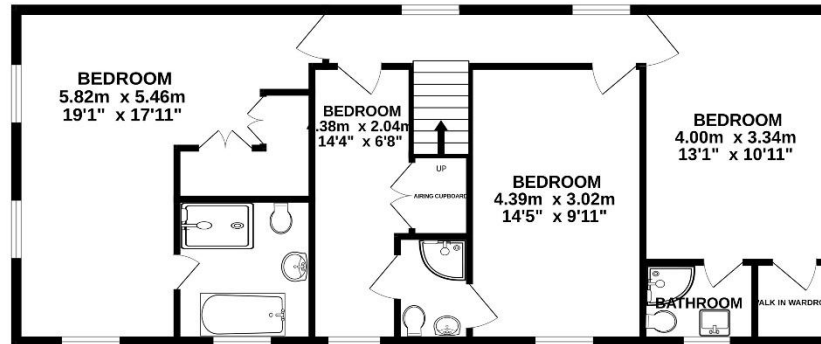
12 High Street, Shaftesbury, Dorset, SP7 8JG | 01747 213106
High Street, Tisbury, Wiltshire, SP3 6LD | 01747 859359

Scan to
read more
on the
property

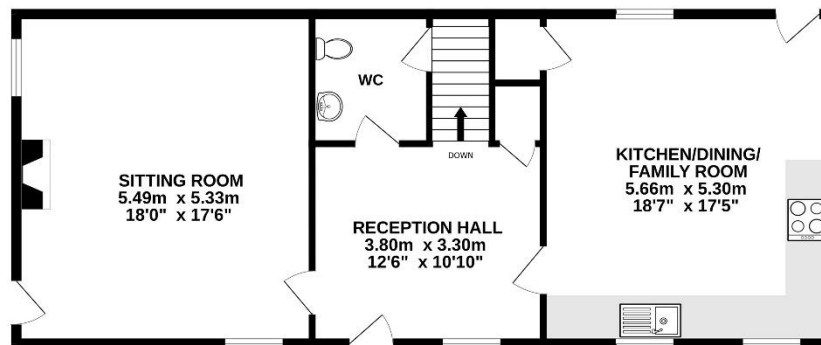




FIRST FLOOR



GROUND FLOOR



TOTAL FLOOR AREA: 164.0 sq.m. (1765 sq.ft.) approx.

Whilst every attempt has been made to ensure the accuracy of the floorplan contained here, measurements of doors, windows, rooms and any other items are approximate and no responsibility is taken for any error, omission or mis-statement. This plan is for illustrative purposes only and should be used as such by any prospective purchaser. The services, systems and appliances shown have not been tested and no guarantee as to their operability or efficiency can be given.
Made with Metropix ©2025



Looking to buy or sell in Tisbury?

At Boatwrights Estate Agents, selling your home starts with trust. As your local, independent experts, we understand the value of your property and your time. Our dedicated team offers tailored marketing, expert guidance, and a personal touch to help you achieve the best possible result.

Scan here to Learn more On Boatwrights?



Important Notice

These particulars do not constitute or form part of an offer or contract, nor may they be regarded as representations. All interested parties must themselves verify their accuracy. All measurements and the proportions of the floor plans provided are approximate.

26 May 2026