



**Cinnabar Cottage, 28 High Street, Ramsbury**  
**£495,000**



## Cinnabar Cottage, 28 High Street

Ramsbury, Marlborough

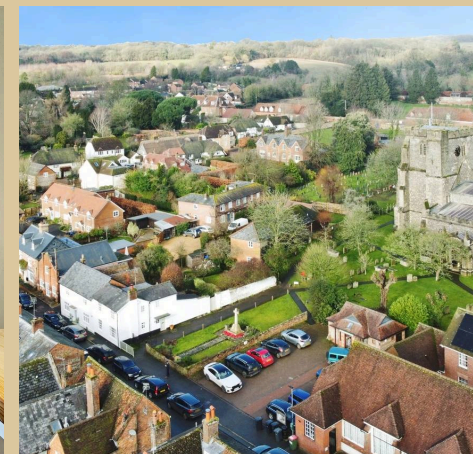
A beautifully presented period cottage in the heart of Ramsbury, Cinnabar Cottage offers charm, character, and modern comfort in an idyllic village setting.

You are welcomed by a spacious entrance hall that leads to all ground-floor rooms. The property is tastefully decorated throughout in neutral tones, complemented by new carpets from the ground floor through to the stairs and landing.

Set just off the entrance hall is a bright, double-aspect sitting room featuring a working fireplace, two large sash windows that fill the room with natural light, and exposed oak beams that enhance its character.

The snug—currently used as a working home office—functions as a flexible living area, enhanced by French doors that open to the garden and make the space bright and inviting. Additional features include useful under-stairs storage and a downstairs WC.

The kitchen enjoys views over the garden and features ample cupboard space, wooden-style flooring, a brand new De'Longhi Rangemaster, and a charming stable door.



Upstairs, practical shelving has been cleverly incorporated into the stair alcoves. The family bathroom offers a bath, separate shower, WC and basin, with wide windows bringing in plenty of natural light.

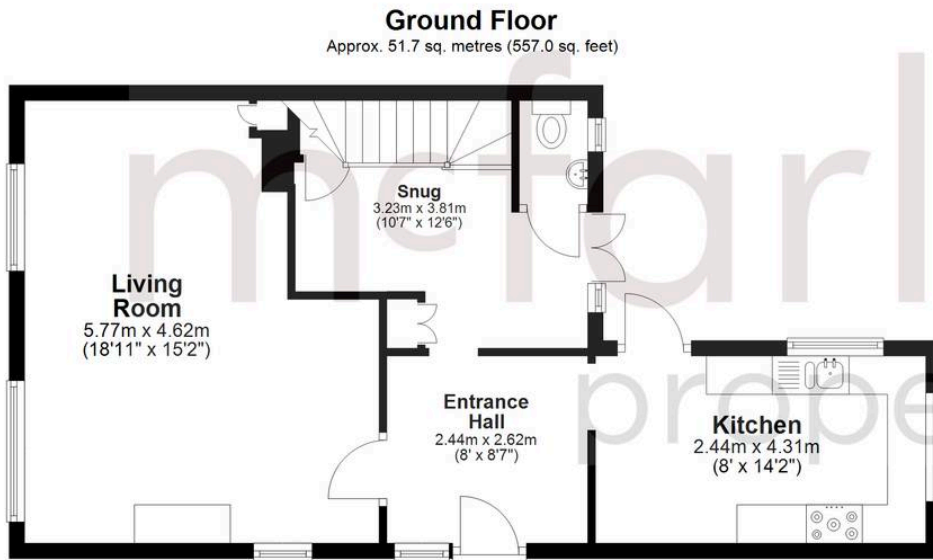
There are three bedrooms. The first is a double with built-in storage and sash windows overlooking the High Street, while the second also enjoys a double-aspect layout with views towards the High Street. The third bedroom is a charming, light-filled space with a double-aspect layout and delightful views of the village church.

Outside, the cottage enjoys a charming garden with a patio area, lawn, and mature borders. A side gate provides direct access to the church, providing a peaceful and attractive setting.

A truly charming semi-detached village cottage offering period features, modern updates, and a fantastic position within sought-after Ramsbury. Early viewing is highly recommended.

- Three charming double bedrooms
- Bright sitting room with sash windows and working fireplace
- Versatile snug/home office with garden access
- Well-equipped kitchen with stable door and garden views
- Attractive garden with patio and mature borders
- Convenient on-street parking typically available nearby





Total area: approx. 90.5 sq. metres (973.6 sq. feet)

## McFarlane Sales & Lettings

McFarlane Sales & Letting, 106 High Street - SN8 1LT

01672 514380 • marlborough@mcfarlaneproperty.com • www.mcfarlaneproperty.com/

mcfarlane  
property.com