



abbotFox

73

Newton Flotman, NR15  
£975

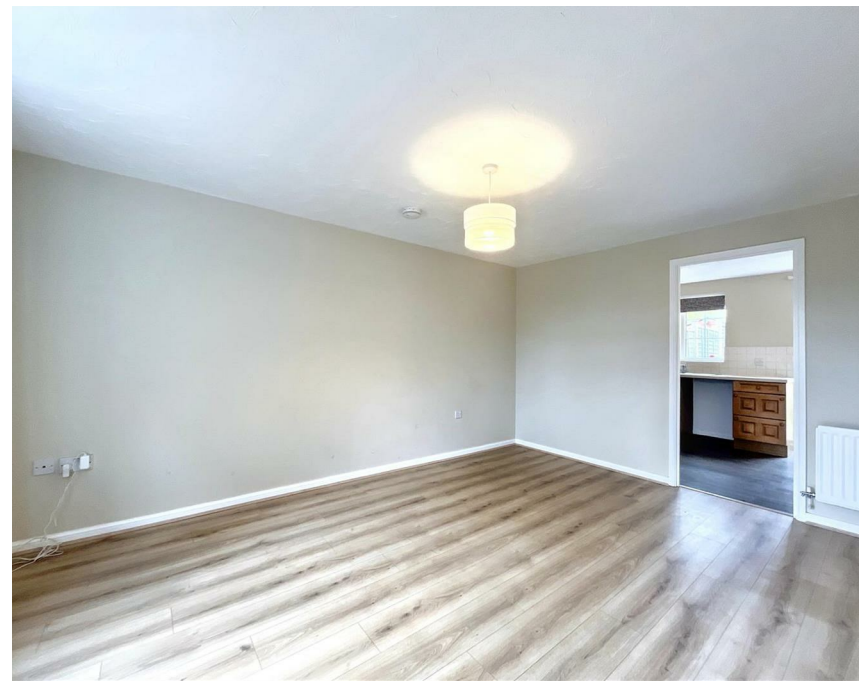
“

We are a team of genuine individuals who hold a deep passion for both property and marketing. Collectively, we bring over 70 years of experience in the property market of Norfolk and Suffolk. Our affection for both counties runs deep, and we are enthusiastic about sharing our passion with you.

Colin McKenzie | **Branch Partner**







## THE DETAIL \_\_\_\_\_

abbotFox presents this modern terraced home. Located in the popular village of Newton Flotman, this home offers an ideal space for any professional couple. With the property offering two bedrooms, en-suite to master and family bathroom to the first floor, the ground floor offers a generous lounge and kitchen diner to the ground floor. Externally, the enclosed rear garden affords a surprising degree of privacy. An internal viewing comes highly recommended.



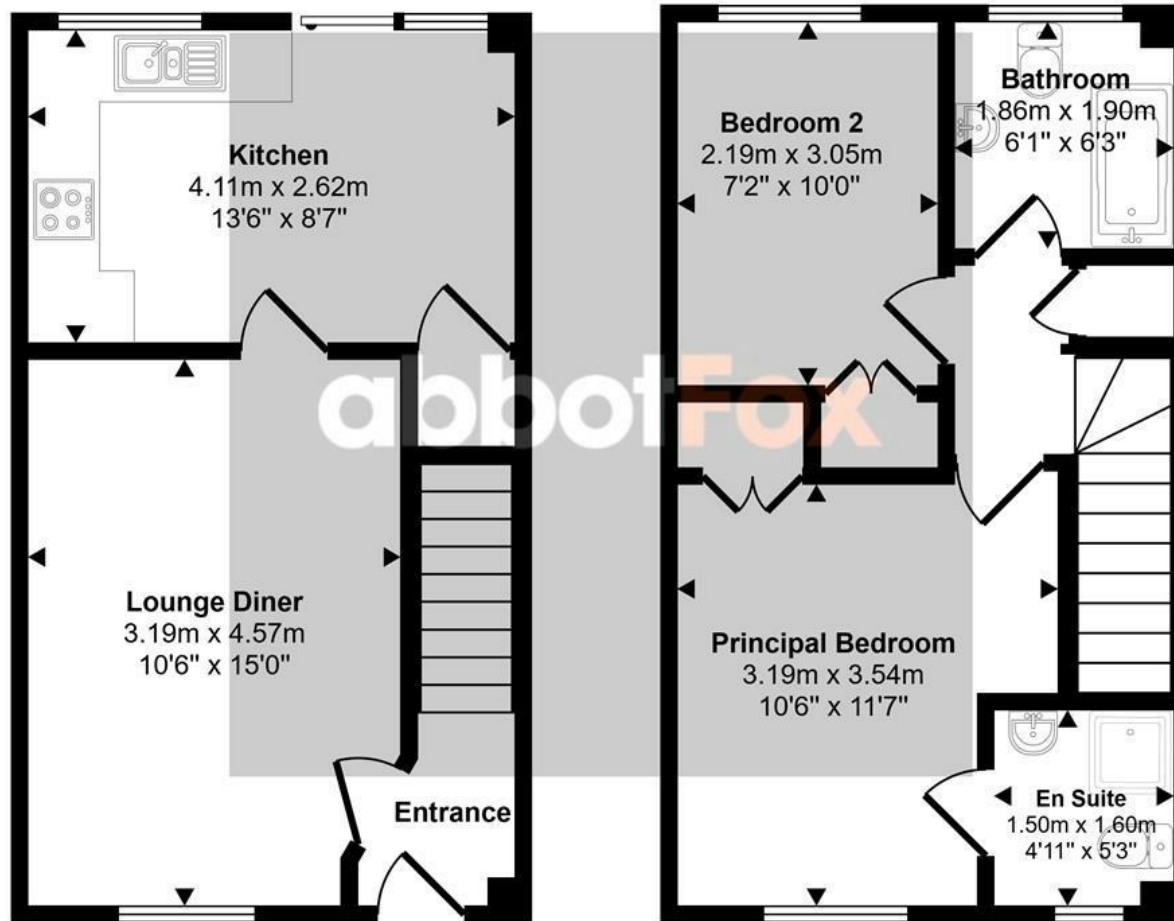




## THE HIGHLIGHTS \_\_\_\_\_

- Modern terraced house
- Two bedrooms
- En-suite to master
- Generous living accommodation
- Popular village location
- Viewing advised

Approx Gross Internal Area  
61 sq m / 657 sq ft



Ground Floor  
Approx 30 sq m / 324 sq ft

First Floor  
Approx 31 sq m / 333 sq ft

This floorplan is only for illustrative purposes and is not to scale. Measurements of rooms, doors, windows, and any items are approximate and no responsibility is taken for any error, omission or mis-statement. Icons of items such as bathroom suites are representations only and may not look like the real items. Made with Made Snappy 360.

*Let's talk*

01603 660000

sales@abbotfox.co.uk

@abbotfox

EPC RATING -

Disclaimer – In accordance with the Property Misdescriptions Act, the company abbotFox gives notice that all descriptions, references to condition, necessary permissions for use and other details are given in good faith and believed to be correct, but any purchaser should not rely on them as statements of fact, and must satisfy themselves by inspection or other means, as to their accuracy.