



Charlotte Close
Chatham | ME5 7LQ

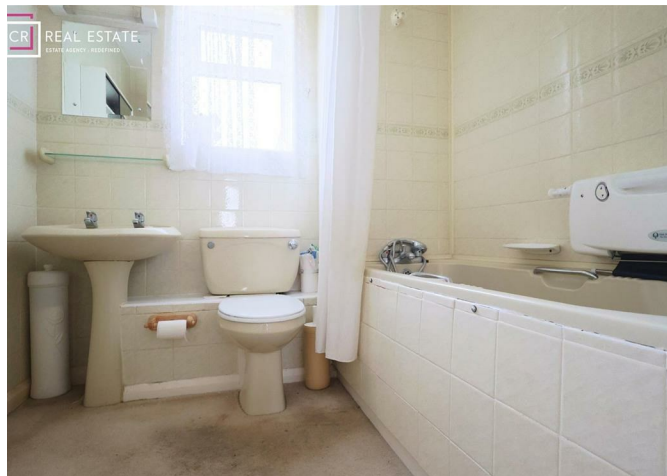
Charlotte Close , Chatham, ME5 7LQ

A well-presented three-bedroom detached family home offered for sale with no onward chain, situated in a popular residential location close to local amenities and convenient motorway links.

The ground floor comprises a spacious lounge, a separate dining room and a fitted kitchen, providing practical and versatile living space for modern family life. To the first floor are three well-proportioned bedrooms and a family bathroom.

Externally, the property benefits from a private and enclosed rear garden, ideal for families and entertaining, along with off-street parking and a garage to the front.

£350,000



Entrance Hall

Lounge

13'4 x 12'6 (4.06m x 3.81m)

Dining Room

10'2 x 8'1 (3.10m x 2.46m)

Kitchen

10'2 x 8'1 (3.10m x 2.46m)

Bedroom

12'2 x 9'1 (3.71m x 2.77m)

Bedroom

9'2 x 9'1 (2.79m x 2.77m)

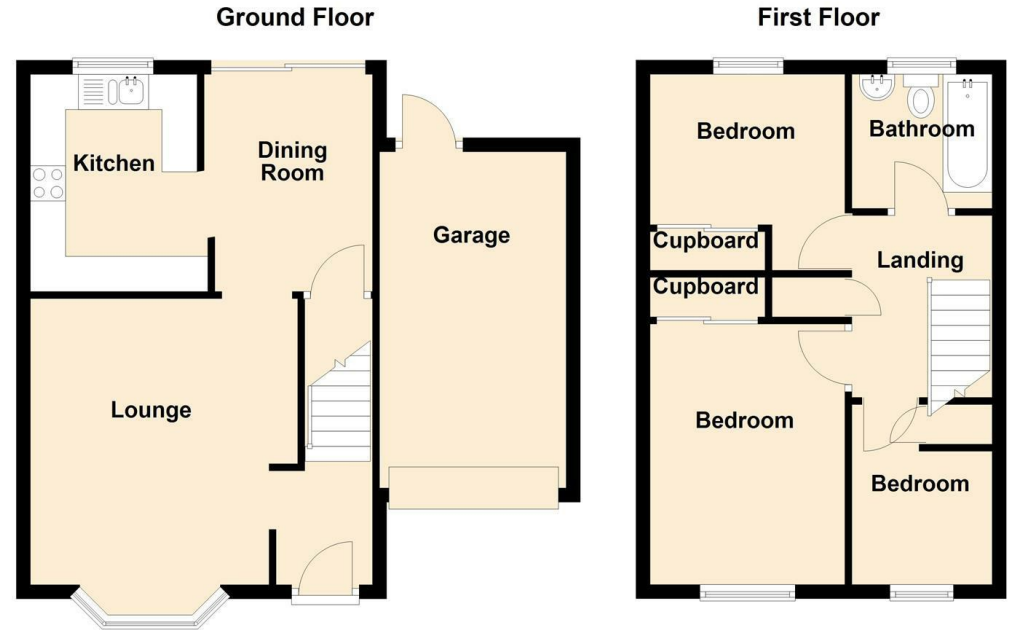
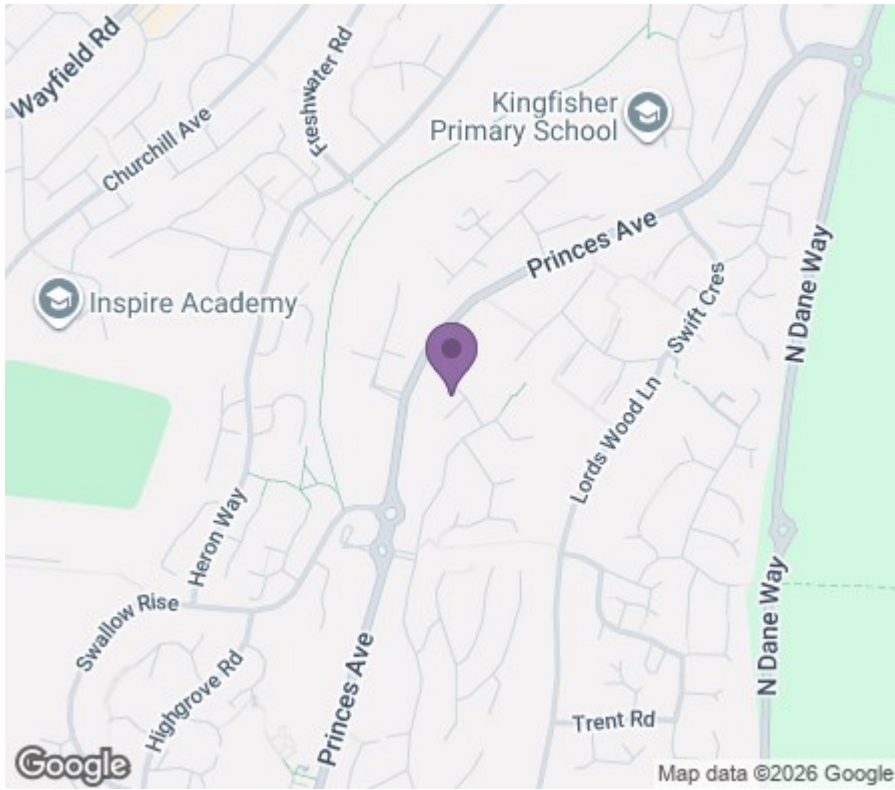
Bedroom

8'5 x 6'7 (2.57m x 2.01m)

Bathroom

6'7 x 6'3 (2.01m x 1.91m)





18 - 20 High Street
 Gillingham
 Kent
 ME7 1BB
01634 570057

www.crr realestate.co.uk
twitter.com/CRRealEstateUK
facebook.com/CRRealEstateUK



Energy Efficiency Rating		Current	Potential
<i>Very energy efficient - lower running costs</i>			
(92 plus) A			
(81-91) B			
(69-80) C			
(55-68) D			
(39-54) E			
(21-38) F			
(1-20) G			
<i>Not energy efficient - higher running costs</i>			
England & Wales		EU Directive 2002/91/EC	

Environmental Impact (CO ₂) Rating		Current	Potential
<i>Very environmentally friendly - lower CO₂ emissions</i>			
(92 plus) A			
(81-91) B			
(69-80) C			
(55-68) D			
(39-54) E			
(21-38) F			
(1-20) G			
<i>Not environmentally friendly - higher CO₂ emissions</i>			
England & Wales		EU Directive 2002/91/EC	

CR Real Estate endeavour to maintain accurate depictions of properties in Virtual Tours, Floor Plans and descriptions, however, these are intended only as a guide and purchasers must satisfy themselves by personal inspection.