



OVER 60?

Secure this property
for up to **59% less!**

Price
£375,000

Freehold

3x  1x  2x 

**The Grove, Deal, Kent,
CT14**

Wards
Helping you move forwards



Main features

- No onward chain
- Desirable location within walking distance to High street
- Ideal family house or investment
- Character property with bay windows, exposed floor boards and fire place
- Currently a blank canvas to make your own

Accommodation

GROUND FLOOR

Entrance Hallway

Lounge : 15'6 x 11'9 (4.73m x 3.58m)

Dining Room : 10'9 x 7'6 (3.28m x 2.29m)

Kitchen : 20'3 x 11'6 (6.18m x 3.51m)

FIRST FLOOR

Landing

Bedroom 3: 11'7 x 10'4 (3.53m x 3.15m)

Shower room

Bedroom 2: 11'6 x 10'10 (3.51m x 3.30m)

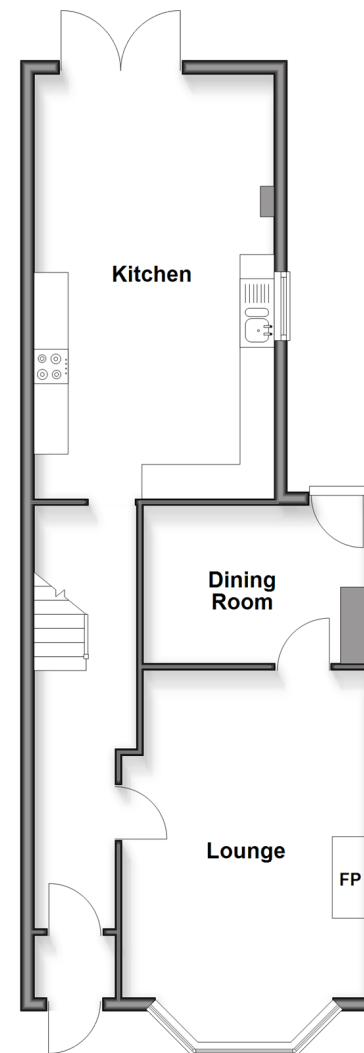
Bedroom 1: 15'11 x 11'5 (4.85m x 3.48m)

OUTSIDE

Front and Rear Gardens

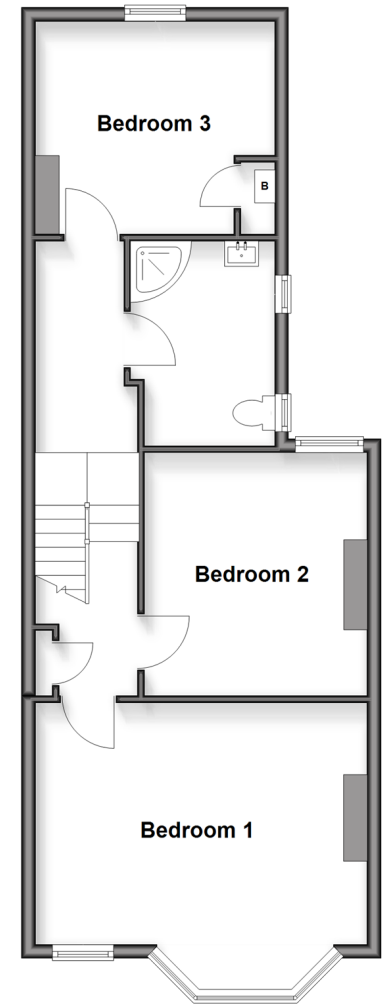
Ground Floor

Approx. 57.5 sq. metres (618.6 sq. feet)



First Floor

Approx. 57.5 sq. metres (618.6 sq. feet)



Call Deal - 01304 361420 ■ wardsof Kent.co.uk

- If buying to let, the energy rating will need to be improved to at least 'E' rating before you can let the property
- Legal advice should be taken to verify fixtures/fittings, planning, alterations and/or lease details
- Appliances & services are untested, dimensions are approximate and floor plans are not to scale
- Through a Homewise Home For Life Plan people aged 60+ can secure this property for up to 50% less, by purchasing a Lifetime Lease.



10634514/20250823/BG/WSM