



Coed Celyn Drive

Guide Price £120,000 to £125,000

- No Chain
- Private Allocated Parking Space
- Excellent Road and Public Transport Links
- Bright and Spacious Living Area
- Two Double Bedrooms
- Set Within Scenic and Peaceful Surroundings
- Well-kept Communal Gardens
- EPC Rating: C



Pinkmove

01633 746088
team@pinkmove.co.uk



Pinkmove

About the property

Introducing this beautifully maintained top-floor, two-bedroom apartment, offering modern living in a peaceful and highly desirable setting. Bright and inviting throughout, this home presents an excellent opportunity for first-time buyers, professionals, or anyone seeking a low-maintenance property in a convenient location.

Positioned on the top floor, the apartment benefits from superb natural light, a heightened sense of privacy, and pleasant views over the surrounding area. It features two generously sized bedrooms and a spacious lounge ideal for relaxing or entertaining. With the added advantage of private allocated parking, the property offers comfort, practicality, and ease—whether you're hosting guests or unwinding at home.

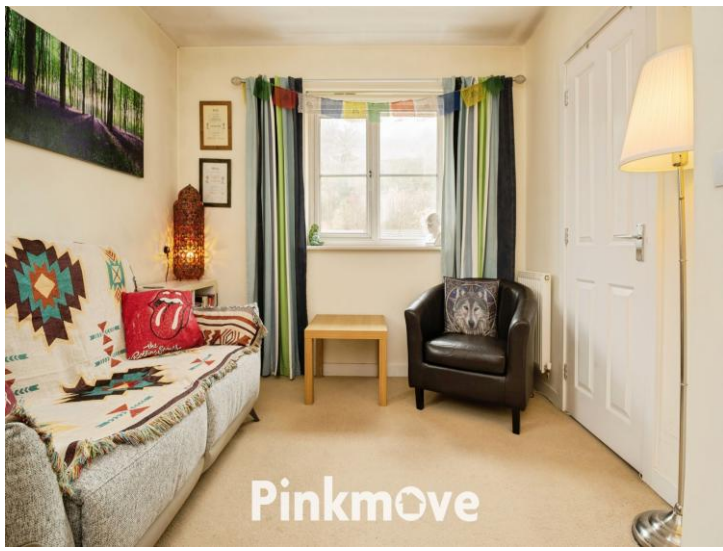
The development is well regarded for its quiet residential environment while remaining close to local amenities. Excellent road links and nearby public transport make commuting simple, with shops, schools, and scenic outdoor spaces all within easy reach. This lovely apartment offers a comfortable lifestyle in a sought-after location—ready for its next owner to move straight in and enjoy.



Pinkmove



Pinkmove



Accommodation

Living Room

Kitchen

Bedroom 1

Bedroom 2

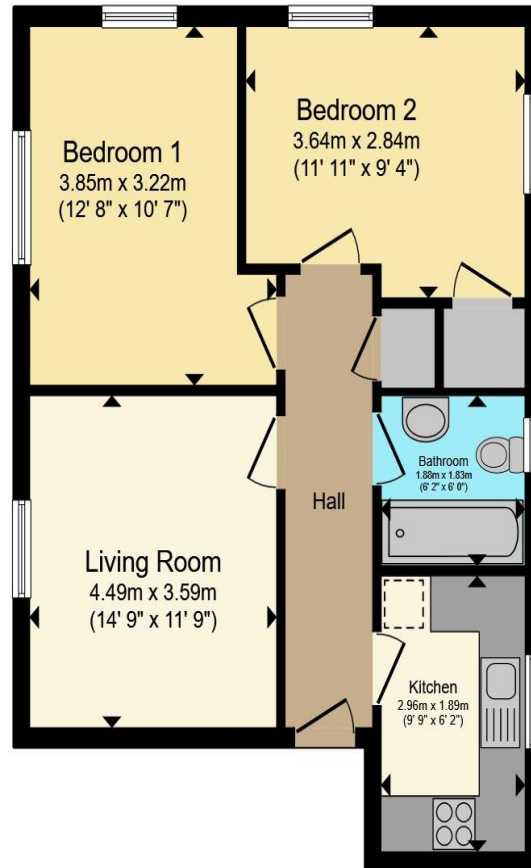
Bathroom

01633 746088

team@pinkmove.co.uk

Pinkmove

Floorplan



Total floor area 51.0 sq.m. (549 sq.ft.) approx

This floor plan is for illustrative purposes only. It is not drawn to scale. Any measurements, floor areas (including any total floor area), openings and orientation are approximate. No details are guaranteed, they cannot be relied upon for any purpose and they do not form part of any agreement. No liability is taken for any error, omission or misstatement. A party must rely upon its own inspection(s). Powered by www.focalagent.com

Pinkmove

Important Information

Note while we endeavour to make our sales details accurate and reliable, if there is any point which is of particular interest to you, please contact the office and we will be pleased to confirm the position for you. We have not personally tested any apparatus, equipment, fixtures, fittings or services and cannot verify they are in working order or fit for their purposes. Nothing in these particulars is intended to indicate that carpets or curtains, furnishings or fittings, electrical goods (whether wired or not). Gas fires or light fittings or any other fixtures not expressly included form part of the property offered for sale. This computer generated Floorplan, if applicable, is intended as a general guide to the layout and design of the property. It is not to scale and should not be relied upon for dimensions. Tenure: We cannot confirm the tenure of the property as we have not had access to the legal documents. The buyer is advised to obtain verification from their solicitor or surveyor.

Peter Alan Limited is registered in England and Wales under company number 2073153, Registered Office is Cumbria House, 16-20 Hockliffe Street, Leighton Buzzard, Bedfordshire, LU7 1GN. VAT Registration Number is 500 2481 05. For activities relating to regulated mortgages and non-investment insurance contracts, Peter Alan Limited is an appointed representative of Connells Limited which is authorised and regulated by the Financial Conduct Authority. Connells Limited's Financial Services Register number is 302221. Most buy-to-let

