



Redan Road

Redan Road

- Charming terraced house on Redan Road
- Features three spacious double bedrooms, including an en-suite bathroom in the master bedroom
- Two inviting reception rooms complemented by a generous kitchen/diner
- Includes a versatile study/nursery
- Benefits from off-road parking
- Highly desirable location

This charming Redan Road terraced home combines spacious living with modern convenience, offering three double bedrooms, including a master with en-suite. Its two reception rooms and inviting kitchen/diner create an ideal setting for family life, work, and entertaining. With off-road parking and a welcoming community feel, it's a standout opportunity in a highly desirable location.

Nestled on the charming Redan Road, this delightful terraced house offers a perfect blend of comfort and convenience. With three generously sized double bedrooms, including a master suite with an en-suite bathroom, this property is ideal for families or those seeking extra space.



The home boasts two well-appointed reception rooms, providing ample space for relaxation and entertaining. The spacious lounge, with open fire place invites you to unwind, while the kitchen/diner serves as a wonderful hub for family meals and gatherings. The layout is thoughtfully designed to enhance both functionality and flow throughout the living areas.

In addition to the three bedrooms, there is a versatile study or nursery, perfect for those who require a dedicated workspace or a cozy area for young children. The family bathroom is conveniently located, ensuring that all members of the household have easy access to essential amenities.

For those with vehicles, the property offers off-road parking, a valuable feature in this sought-after location.

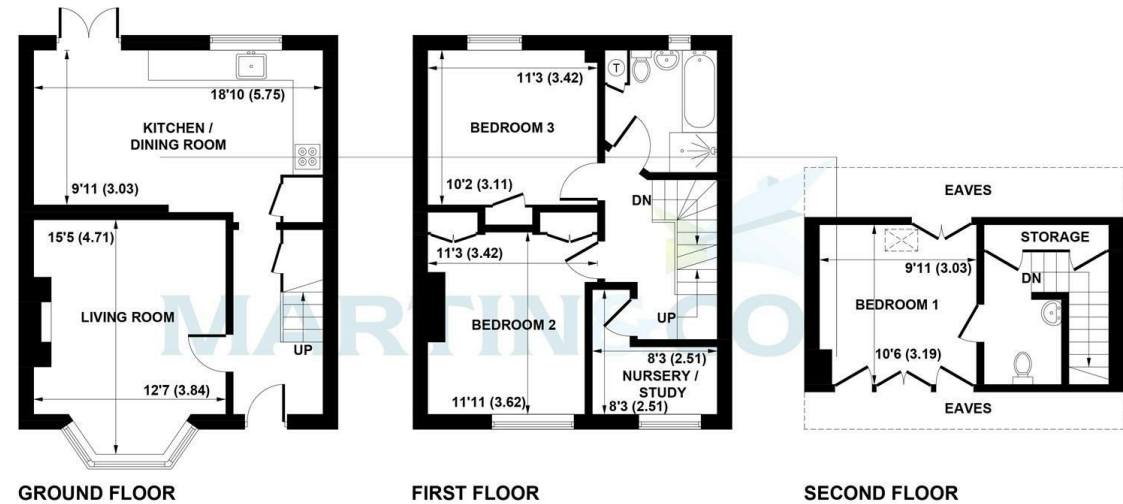
This terraced house on Redan Road is not just a home; it is a lifestyle choice, providing a welcoming environment in a vibrant community. With its spacious interiors and practical features, it is an excellent opportunity for anyone looking to settle in a desirable area. Do not miss the chance to make this lovely property your own.

Council Tax Band: C

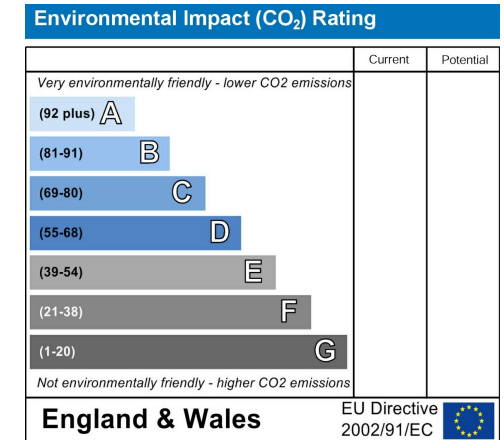
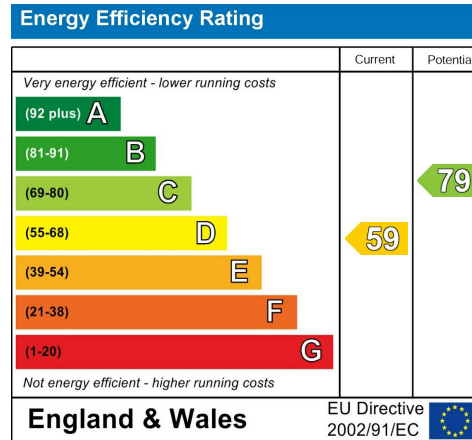


Redan Road, Aldershot

Approximate Gross Internal Area = 105.1 sq m / 1131 sq ft



This plan is for layout guidance only. Not drawn to scale unless stated. Windows and door openings are approximate. Whilst every care is taken in the preparation of this plan, please check all dimensions, shapes and compass bearings before making any decisions reliant upon them. (ID1257760)
Produced by BlueSky Estate Agency Services on behalf of Martin&Co



Martin & Co Aldershot
173 Victoria Road, Aldershot, Hampshire,
GU11 1JU
Aldershot@martinco.com

01252 311974
<http://www.martinco.com>

MARTIN&CO

Accuracy: References to the Tenure of a Property are based on information supplied by the Seller. The Agent has not had sight of the title documents. A Buyer is advised to obtain verification from their Solicitor. Items shown in photographs including but not limited to carpets, fixtures and fittings are not included unless specifically mentioned within the sales particulars. They may however be available by separate negotiation. Buyers must check the availability of any property and make an appointment to view before embarking on any journey to see a property. No person in the employment of the agent has any authority to make any representation about the property, and accordingly any information given is entirely without responsibility on the part of the agents, sellers(s) or lessors(s). Any property particulars are not an offer or contract, nor form part of one. **Sonic / laser Tape:** Measurements taken using a sonic / laser tape measure may be subject to a small margin of error. **All Measurements:** All Measurements are Approximate. **Services Not tested:** The Agent has not tested any apparatus, equipment, Fixtures and Fittings or services and so cannot verify that they are in working order or fit for the purpose. A Buyer is advised to obtain verification from their Solicitor or Surveyor.

