



Hopedale Road, SE7
£950,000

Dexters



Hopedale Road, SE7

Situated on the ever-popular Hopedale Road SE7, a beautiful tree-lined residential street, is this impressive five-bedroom Victorian terraced home, beautifully combining period charm with modern family living across three spacious floors.

The ground floor offers a wonderful sense of space and character throughout. To the front is a stunning reception room complete with a feature wood burner, seamlessly knocked through to the dining room. To the rear, you will find a beautifully presented Grey shaker-style kitchen with quartz worktops and workspace whilst also providing ample room for a dining table. Double doors lead directly out onto a stunning private rear garden, ideal for relaxing, hosting and family life. The first floor comprises three well-proportioned double bedrooms alongside a stylish family bathroom. Occupying the top floor are two further bedrooms, including a generous principal suite benefitting from its own en-suite bathroom.

Located on the popular Charlton Slopes, in a wide, sought after road, within the catchment area of popular primary schools, an outstanding secondary school and nurseries. There are excellent transport links to the City and Canary Wharf with regular buses for North Greenwich station and within 0.5 miles of Westcombe Park Station. This property is also a short walk away from Blackheath Standard and Greenwich Park.

Features

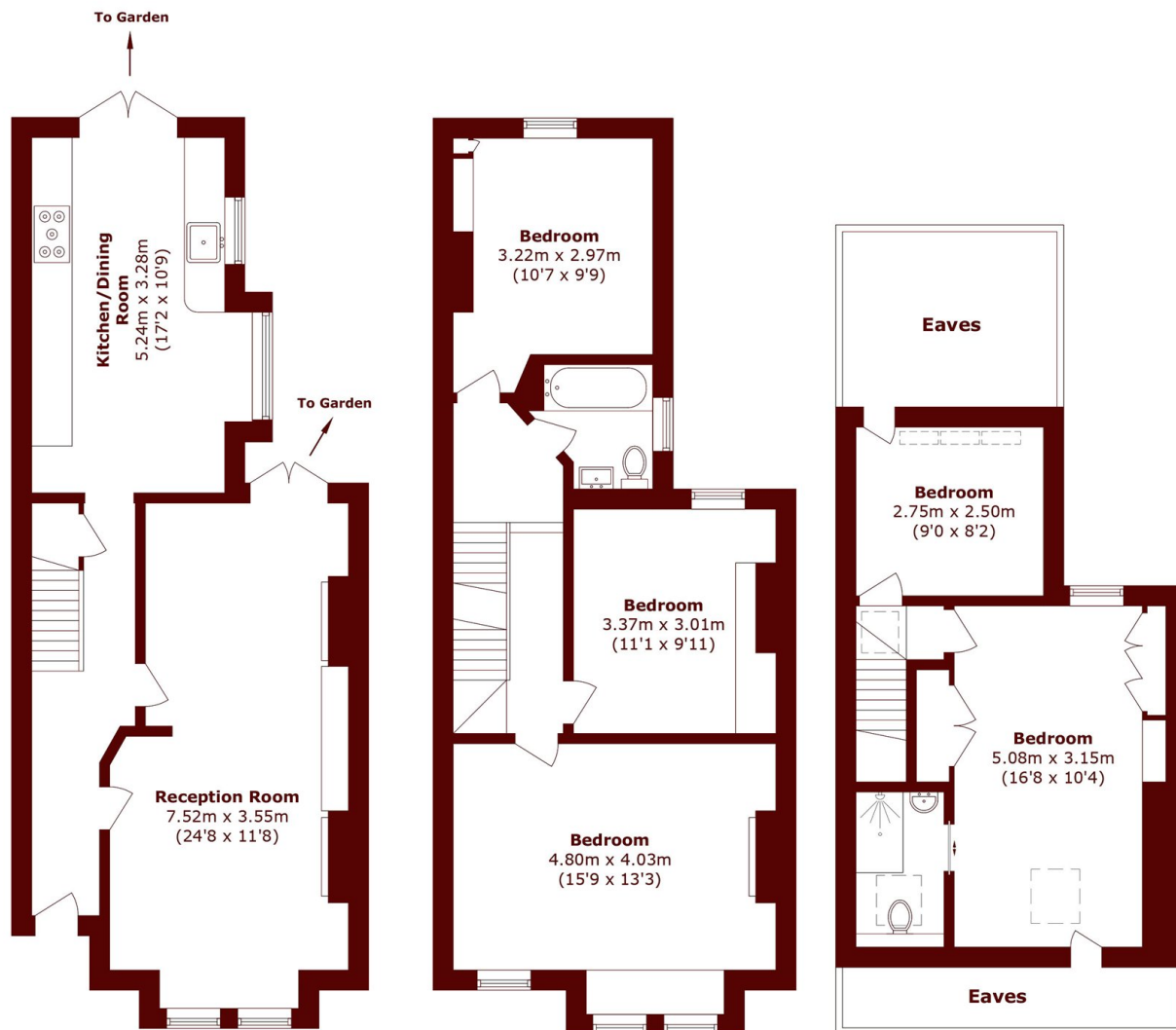
- Five Bedrooms
- Beautifully Presented Throughout
- Much Sought After Road
- Views Over London
- Large Kitchen Diner







Hopedale Road, London, SE7



Ground Floor

First Floor

Second Floor

Total area (approx.): 130.9 sq. m (1409.0 sq. ft)
(Excluding Eaves)