



Maison De La Croix

Rue De La Croix



Maison De La Croix, Rue De La Croix, St Ouen, JE3 2HA

Charming and characterful family home located in a small development, Maison de la Croix is very conveniently located close to all the village amenities in the popular parish of St Ouen.

Offering over 2000 sq ft of accommodation, the property is laid out over three floors. The ground floor consists of large family living room with functional fireplace, separate eat in kitchen with centre island from here there is also access to another reception room above the kitchen which would make a great kids playroom snug or home office. There is also a utility, second reception room/fourth bedroom and house bathroom. The first floor provides two double bedrooms both with built in wardrobes, one with en-suite bathroom plus a separate shower room. The top floor offers a delightful master bedroom, full of character with vaulted ceiling and original wooden beams it is simply stunning, it has ample eaves storage plus newly fitted modern ensuite bathroom.

Externally it has a sunny south facing garden laid mainly to lawn, with driveway parking for four cars.

Internal viewing is necessary to appreciate this spacious family home.



Parish: St Ouen

Qualification: Qualified

Tenure: Freehold

Price £935,000



- Characterful family home
- Three/Four bedrooms
- Over 2000 sq ft of accommodation
- Three receptions
- South facing garden
- Parking for four cars

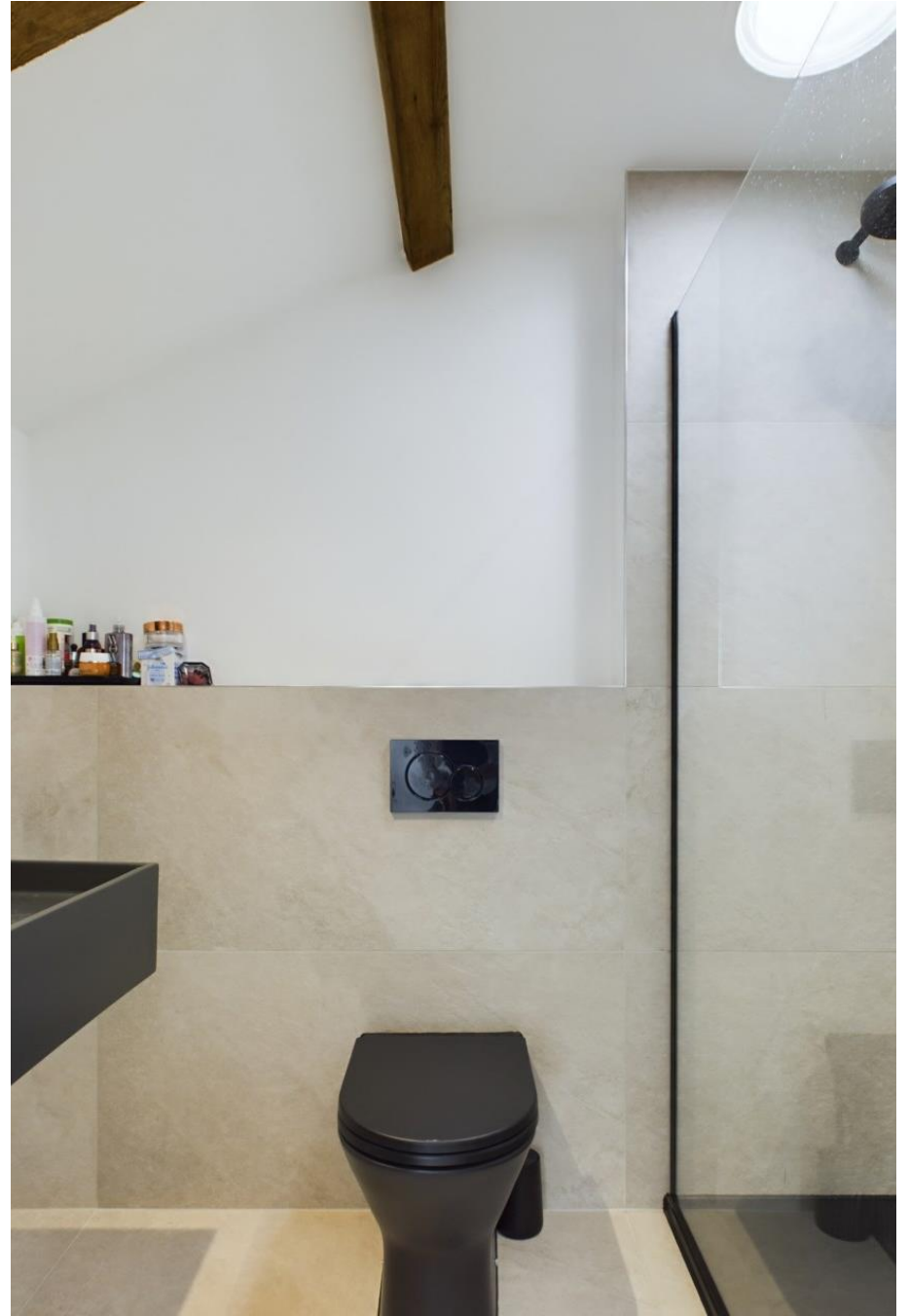






We walk by *Faith*
not by sight.
2 Corinthians 5:7





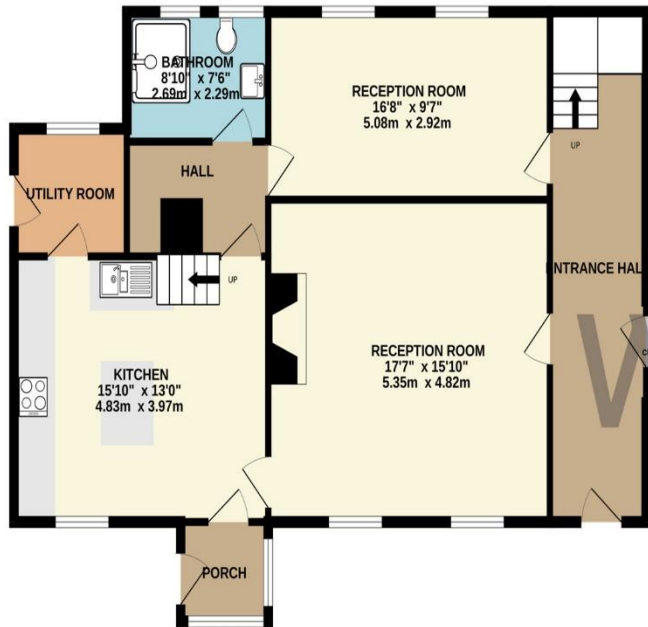




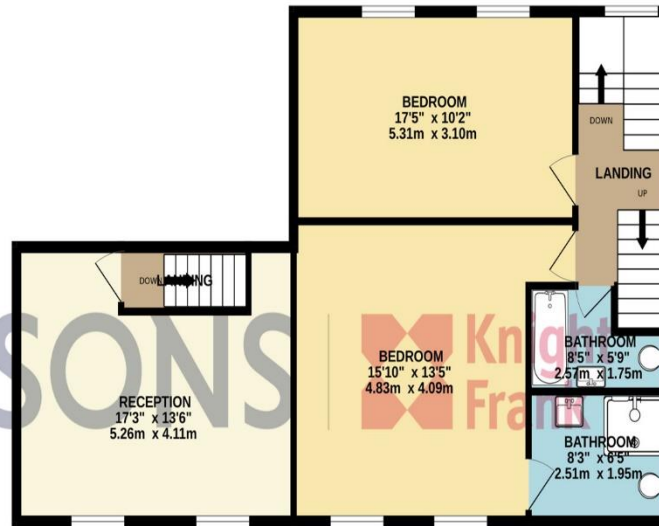




GROUND FLOOR
963 sq.ft. (89.4 sq.m.) approx.



1ST FLOOR
822 sq.ft. (76.4 sq.m.) approx.



2ND FLOOR
297 sq.ft. (27.6 sq.m.) approx.



TOTAL FLOOR AREA : 2081 sq.ft. (193.4 sq.m.) approx.

Whilst every attempt has been made to ensure the accuracy of the floorplan contained here, measurements of doors, windows, rooms and any other items are approximate and no responsibility is taken for any error, omission or mis-statement. This plan is for illustrative purposes only and should be used as such by any prospective purchaser. The services, systems and appliances shown have not been tested and no guarantee as to their operability or efficiency can be given.

Made with Metropix ©2024

This plan is for layout guidance only. Not drawn to scale unless stated. Windows and door openings are approximate. Whilst every care is taken in the preparation of this plan, please check all dimensions, shapes and compass bearings before making any decisions reliant upon them.

Services

Mains drains

Mains water

Electric heating

Fully double glazed

Grade 3 listing (OU0024)

+441534 877977

Knight Frank Jersey

37-39 Halkett Place St Helier, Jersey JE2 4WG

knightfrank.je

Your partners in property

1. Particulars: These particulars are not an offer or contract, nor part of one. You should not rely on statements given by Knight Frank Jersey in the particulars, by word of mouth or in writing (“information”) as being factually accurate about the property, its condition or its value. Neither Knight Frank Jersey nor any joint agent has any authority to make any representations about the property, and accordingly any information given is entirely without responsibility on the part of Knight Frank Jersey. 2. Material Information: Please note that the material information is provided to Knight Frank Jersey by third parties and is provided here as a guide only. While Knight Frank Jersey has taken steps to verify this information, we advise you to confirm the details of any such material information prior to any offer being submitted. If we are informed of changes to this information by the seller or another third party, we will use reasonable endeavours to update this as soon as practical. 3. Photos, Videos etc: The photographs, property videos and virtual viewings etc. show only certain parts of the property as they appeared at the time they were taken. Areas, measurements and distances given are approximate only. 4. Regulations etc: Any reference to alterations to, or use of, any part of the property does not mean that any necessary planning, building regulations or other consent has been obtained. A buyer must find out by inspection or in other ways that these matters have been properly dealt with and that all information is correct. 5. Fixtures and fittings: A list of the fitted carpets, curtains, light fittings and other items fixed to the property which are included in the sale (or may be available by separate negotiation) will be provided by the Seller’s Lawyer. Particulars dated 11/03/2026. All information is correct at the time of going to print.

