

# RAINBOW REID



ESTATE AGENTS || LETTING AGENTS || PROPERTY MANAGEMENT



## St Paul's Avenue

Willesden Green, London, NW2 5SY

An exceptional opportunity to rent this generously proportioned one-bedroom first-floor apartment, available for occupancy from the end of March.

Set within an attractive period conversion, the property is currently being comprehensively refurbished to a high standard. Improvements include full redecoration throughout, the installation of a brand-new contemporary shower room, and new flooring across the entire apartment. This is a must-see property to fully appreciate the space and quality on offer.

Ideally positioned just a short walk from Willesden Green Underground Station (Zone 2, Jubilee Line), the apartment is perfectly suited for commuters, offering excellent transport links into Central London.

The surrounding area boasts a wide range of local amenities, including shops, high street retailers, cafés, and restaurants, as well as the open green spaces of Gladstone Park, all within easy reach.

For further information or to arrange a viewing, please contact us on 020 8830 0181

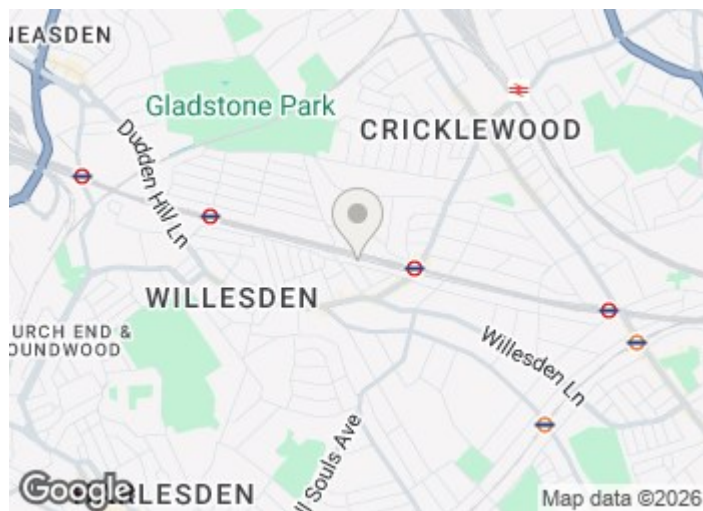
**£1,575 PCM**

# St Paul's Avenue

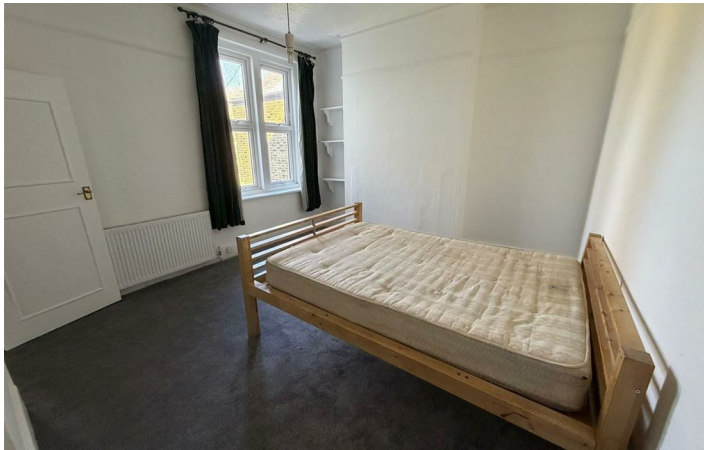
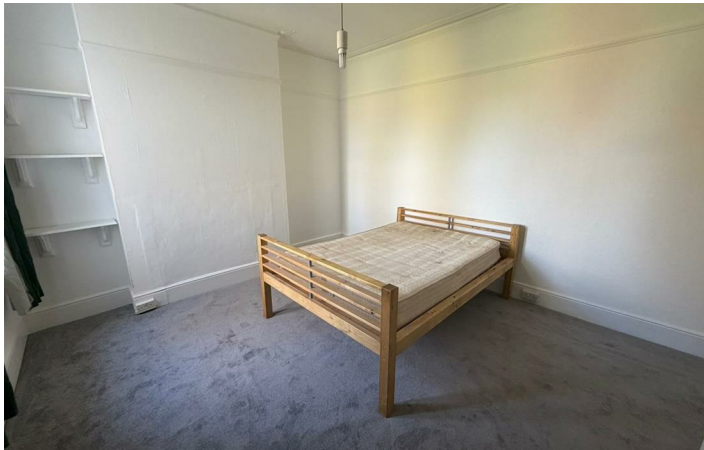
Willesden Green, London, NW2 5SY



- 1 Total Number of Bedrooms
- 1 Bathroom
- 1 Double Bedroom
- 1 Receptions



**Directions**





# Floor Plan

These particulars, whilst believed to be accurate are set out as a general outline only for guidance and do not constitute any part of an offer or contract. Intending purchasers should not rely on them as statements of representation of fact, but must satisfy themselves by inspection or otherwise as to their accuracy. No person in this firm's employment has the authority to make or give any representation or warranty in respect of the property.

