



GREENWICH QUAY, SE8

£2,350 per month

Modern riverfront apartment

Two double bedrooms

Two bathrooms

Off-street parking

Close to Greenwich centre

Energy rating: c

@marshandparsons
marshandparsons.co.uk

MARSH &
PARSONS



ABOUT THE PROPERTY

A modern two bedroom, two bathroom apartment offering a beautiful riverfront location. This property is situated on the second floor of this desirable modern building, located on the edge of Deptford Creek and River Thames. The interior comprises two double bedrooms with the main bedroom featuring an en suite. There is a main bathroom suite and a spacious open plan reception room and kitchen with integrated appliances. Benefitting from an off-street parking space.

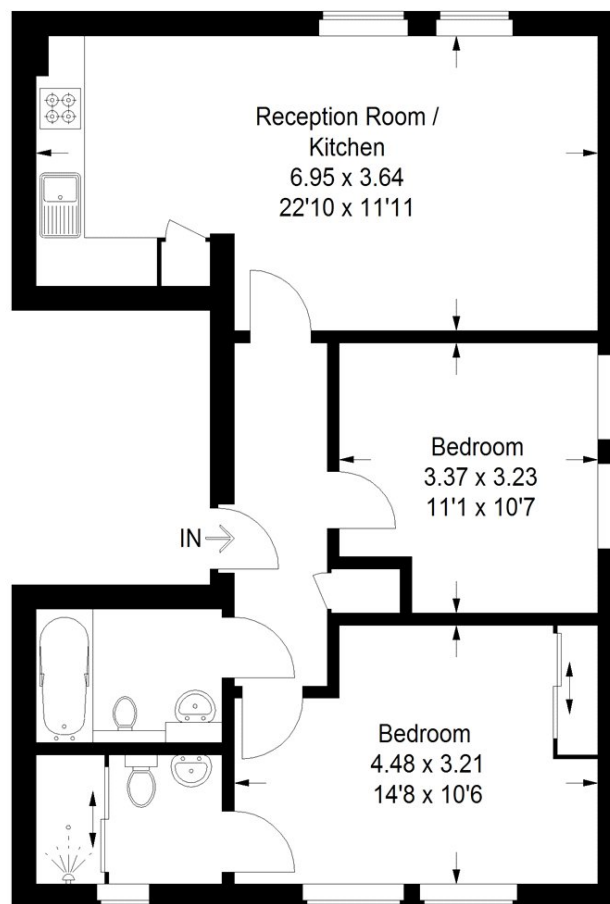
Within a short walk away from Greenwich mainline and DLR stations as well as the Greenwich centre and all it has to offer.



STEP INSIDE GREENWICH QUAY

Greenwich Quay, SE8

Approximate Gross Internal Area
63.4 sq m / 682 sq ft



Second Floor

This plan is for layout guidance only. Not drawn to scale unless stated. Windows and door openings are approximate. Whilst every care is taken in the preparation of this plan, please check all dimensions, shapes and compass bearings before making any decisions reliant upon them. (ID770018)

Greenwich
020 8815 2230

Energy Rating: C We aim to make our particulars both accurate and reliable. However, they are not guaranteed; nor do they form part of an offer or contract. If you require clarification on any points then please contact us, especially if you're traveling some distance to view. Please note that appliances and heating systems have not been tested and therefore no warranties can be given as to their good working order

MARSH &
PARSONS