



37 ALMA STREET, W-S-M

ASKING PRICE OF £100,000

COOKE & CO
your local property expert

PROPERTY FEATURES

- NO ONWARD CHAIN
- CONVENIENT LOCATION
- GENEROUSLY SIZED BEDROOM
- FIRST FLOOR APARTMENT
- SPACIOUS LOUNGE
- LEASEHOLD PROPERTY

37 ALMA STREET, WESTON-SUPER-



Available with no onward chain, this light and airy one-bedroom apartment represents an excellent opportunity for first-time buyers or investors alike. The well-proportioned accommodation begins with an entrance hall with stairs rising to the first floor, leading to a landing with a useful built-in storage cupboard. From here, the property opens into a spacious lounge/diner, providing an ideal space for both relaxing and entertaining.

The fitted kitchen is well arranged and features an integrated hob and oven, offering practical and functional cooking space. The apartment further benefits from a generously sized double bedroom, complemented by a well-proportioned ensuite bathroom.

Overall, this attractive property offers comfortable living in a bright and well-laid-out setting, making it a superb choice for those looking to step onto the property ladder or secure a solid investment opportunity.

LOCATION

Situated close to the centre of Weston-super-Mare, Alma Street is a convenient and well-connected location with a wide range of amenities nearby. The town centre is within easy reach, offering a variety of shops, cafés, restaurants, and supermarkets, while Weston-super-Mare railway station provides direct rail links for commuters.

The seafront, including the popular Grand Pier and Weston-super-Mare Beach, is also within comfortable walking distance, giving residents the option to enjoy the promenade and local attractions whenever they choose.

Overall, the area combines everyday practicality with excellent access to local facilities, making it a well-placed choice for both homeowners and investors.

LANDING

9' 10" x 3' 11" (3.0m x 1.2m) Stairs to ground floor and front door, storage cupboard, access to lounge/diner and bedroom.

LOUNGE/DINER

16' 4" x 12' 9" (5.0m x 3.9m) UPVC double glazed window to front, radiator, flooring laid to carpet, access to kitchen.

KITCHEN

6' 10" x 6' 6" (2.1m x 2.0m) Wall and floor mounted cupboards with countertop over, inset stainless steel sink and drainer, integrated electric hob and cooker, space and plumbing for washing machine.

BEDROOM

16' 4" x 11' 5" (5.0m x 3.5m) UPVC double glazed window to rear, radiator, flooring laid to carpet, access to bathroom.

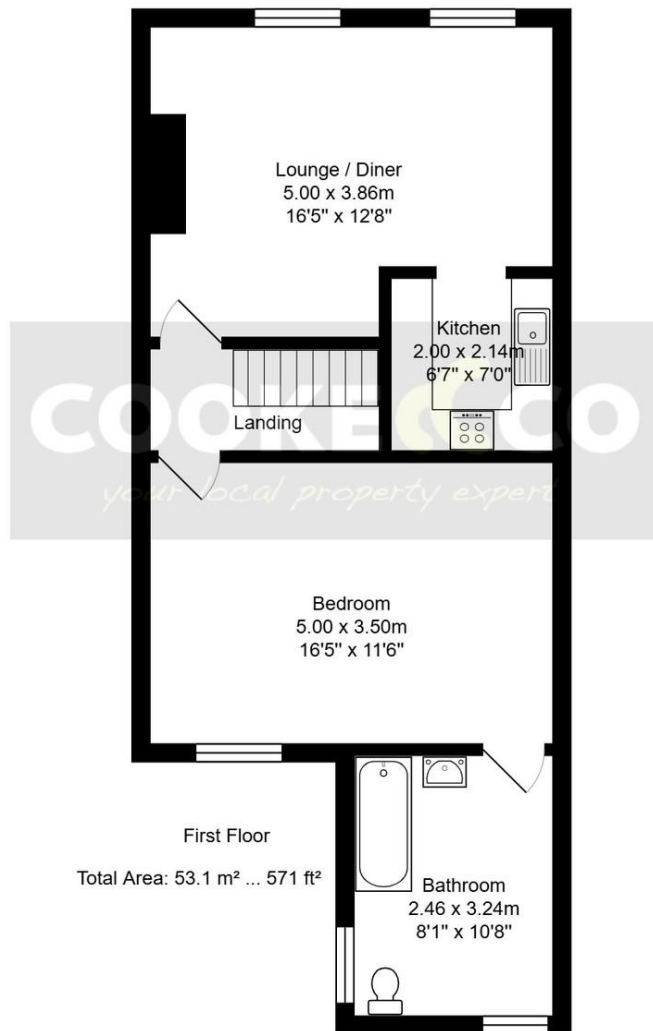
BATHROOM

10' 5" x 8' 2" (3.2m x 2.5m) UPVC double glazed windows to side and rear, bath with shower over, low level WC, hand wash basin, wall mounted gas combi boiler.

37 ALMA STREET, WESTON-SUPER-MARE, BS23 1RD



Council Tax:
Band A
Local Authority:
North Somerset District Council



All measurements are approximate and for display purposes only.



Score	Energy rating	Current	Potential
92+	A		
81-91	B		
69-80	C		79 C
55-68	D	68 D	
39-54	E		
21-38	F		
1-20	G		

enquiries@cookeproperty.co.uk

OFFICE CONTACT INFO

236 High Street
Worle
Weston-Super-Mare
Avon
BS22 6JE

01934 522244
enquiries@cookeproperty.co.uk
www.cookeproperty.co.uk

Agents Note: Whilst every care has been taken to prepare these particulars, they are for guidance purposes only. All measurements are approximate, and are for general guidance purposes only and whilst every care has been taken to ensure their accuracy, they should not be relied upon and potential buyers/tenants are advised to recheck the measurements.

COOKE & CO
your local property expert