



Cleverly Estate, W12

£530 Per week

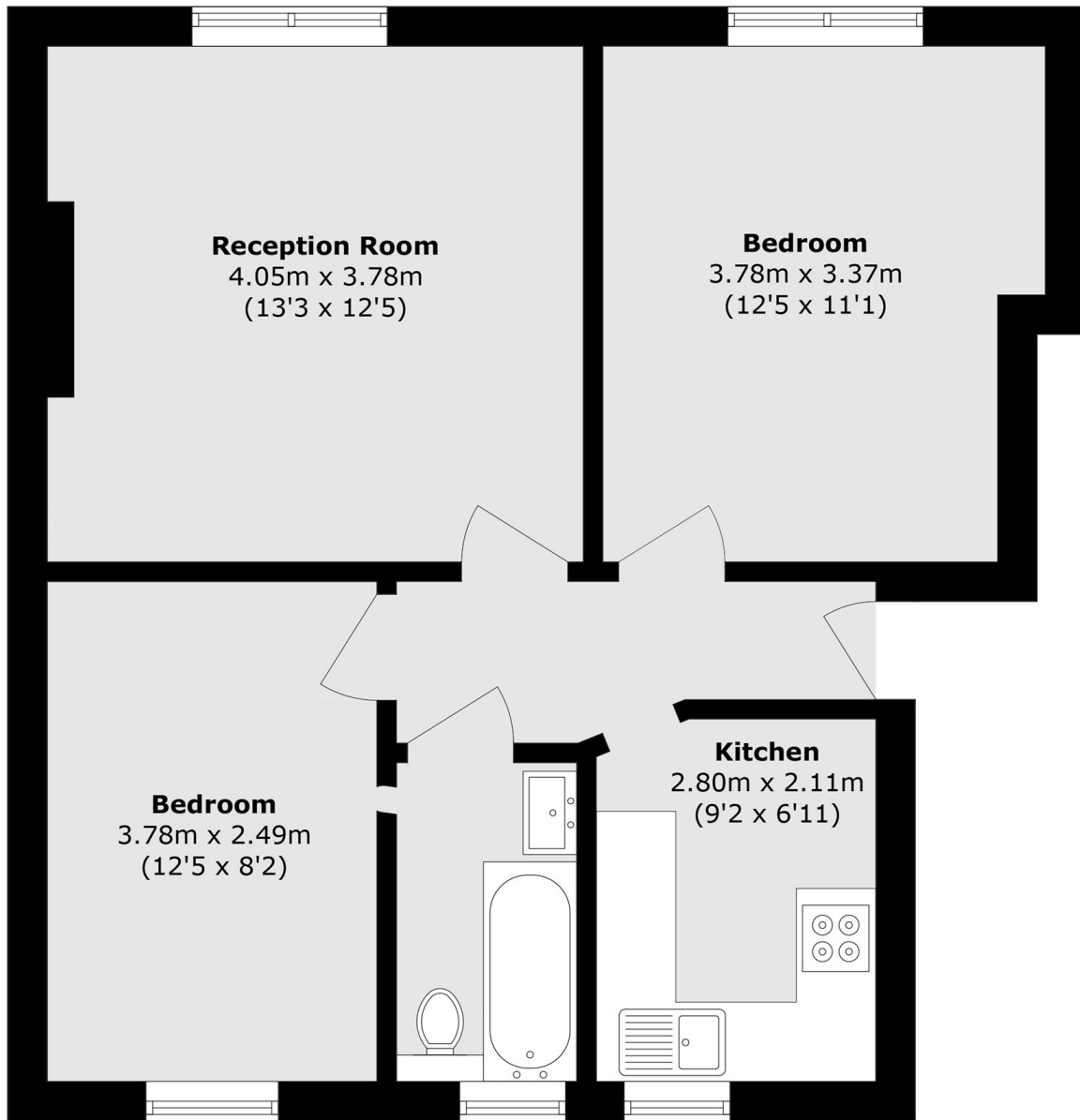
This newly refurbished two bedroom flat is based on a quiet residential street in Shepherds Bush. The flat offers two double bedrooms, a fitted kitchen, separate lounge, tiled bathroom with shower over bath, good storage and modern decor throughout.

The property is close to all local shops and amenities of Shepherds Bush, which include Westfield Shopping Centre and local stations.

Features

- Purpose Built Development
- Separate Kitchen
- Great Location
- Two Double Bedrooms
- Newly Refurbished
- Good transport links

Cleverly Estate,
London, W12



Total area (approx.): 53.2 sq. m (572.6 sq. ft)