



Cloudesley Road, N1

£550 Per week

A bright one bedroom apartment with an open plan reception/kitchen. The property benefits from wooden flooring throughout and an excellent location on a tree lined street in the heart of Islington.

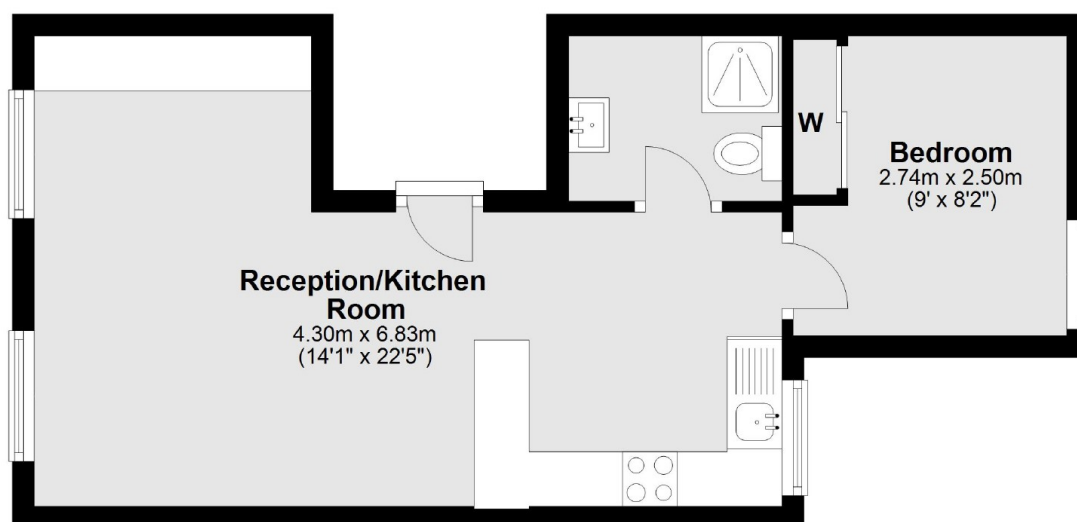
Cloudesley Road is conveniently located for the amenities of Islington's Upper Street (0.1 Miles approx.). Angel Underground Station can be found a short walk away (0.3 Miles approx.) with Highbury and Islington Station is also close by.

Features

- One Bedroom
- Open Plan Living
- Wooden Floors
- Excellent Transport Links
- Tree Lined Street
- Nearby Amenities

Cloudesley Road, London, N1

First Floor



Total area: approx. 32.7 sq. metres (352.1 sq. feet)