



Flat 11, Chamberlain Court Silwood Street, London
London

In Excess of £475,000
OLIVER *OJ* JAUQUES
EST. 1986

Chamberlain Court Silwood Street, London

Council Tax band: D

Tenure: Leasehold

EPC Energy Efficiency Rating: C

EPC Environmental Impact Rating:

- Two double bedrooms
- 980+ years lease
- Balcony
- Dual aspect
- Brand new boiler - 5 year warranty
- EWS1 compliant
- Surrey Quays Train Station 0.4 Miles
- South Bermondsey Train Station 0.4 Miles
- Southwark Park 0.4m

Tenure

Leasehold

Lease Expiry

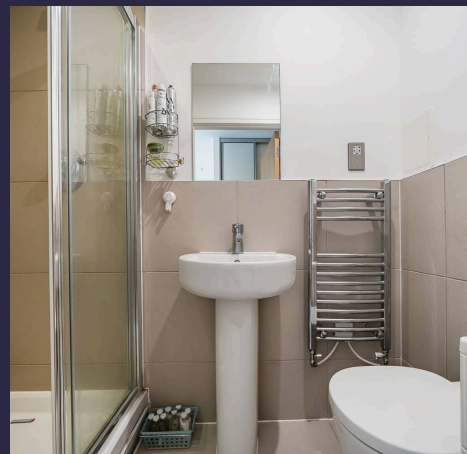
07/01/3010

Ground Rent

£200.00 per year

Service Charge

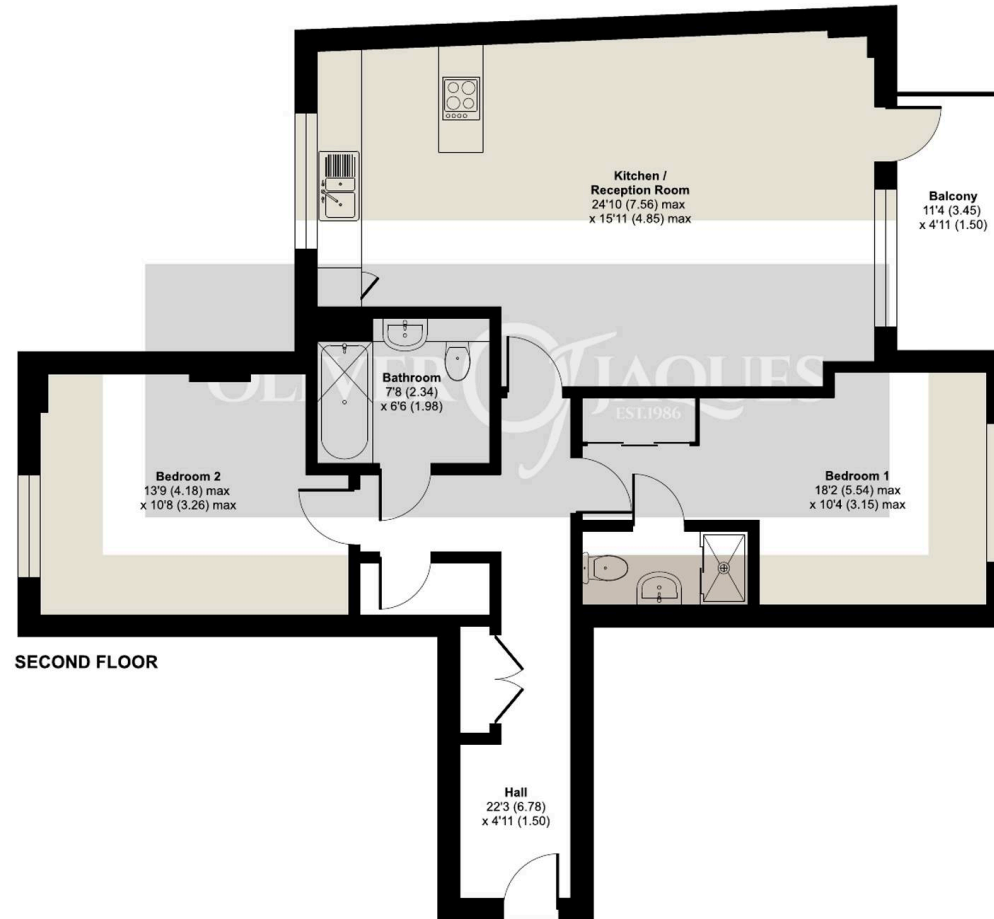
£4,843.00 per year



Silwood Street, London, SE16

Approximate Area = 873 sq ft / 81.1 sq m

For identification only - Not to scale





Oliver Jaques

Oliver Jaques, 229-231 Lower Road - SE16 2LW

02072315050 • southeast@o-j.co.uk • o-j.co.uk/

Every care has been taken with the preparation of this brochure but it is for general guidance and complete accuracy can't be guaranteed. Prospective purchasers should seek clarification from their solicitor. The mention of any appliances fixtures or fittings does not imply they are in working order.