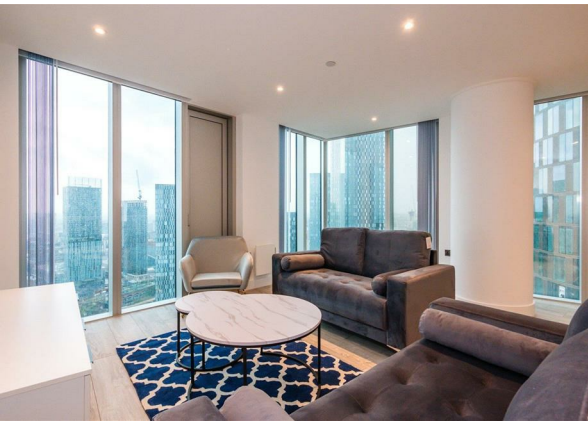
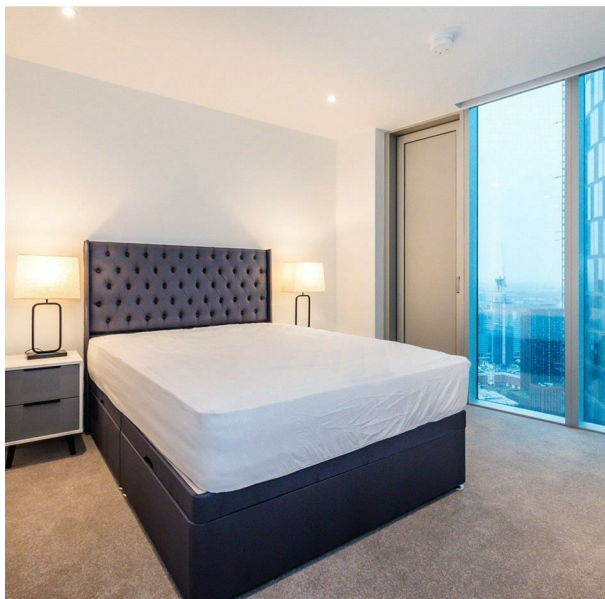


4006 Blade, 15 Silvercroft Street, Manchester, M15 4ZD

£2,200 Per Month

Council Tax Band: New Build



The Blade is a luxury deansgate development with exceptional onsite amenities! This spacious corner aspect two double bedroom, two bathroom apartment situated on the 40th floor is offered furnished with high-specification integrated white goods and blinds included.

Residents can enjoy peace of mind with enhanced security and more leisure amenities than you could think of! Including; Fully-equipped resident-only gym & Yoga studio, spin studio complete with Peleton, sauna and treatment room!

In addition, residents can also enjoy a private dining room, lounge areas and private work spaces.



St Johns Court 19b Quay Street, Manchester, M3 3HN

01616760099

manchester@orlandoreid.co.uk

<https://www.orlandoreid.co.uk/manchester/>

Energy Efficiency Rating		
	Current	Potential
<i>Very energy efficient - lower running costs</i>		
(92 plus) A		
(81-91) B		
(69-80) C		
(55-68) D		
(39-54) E		
(21-38) F		
(1-20) G		
<i>Not energy efficient - higher running costs</i>		
England & Wales	EU Directive 2002/91/EC	