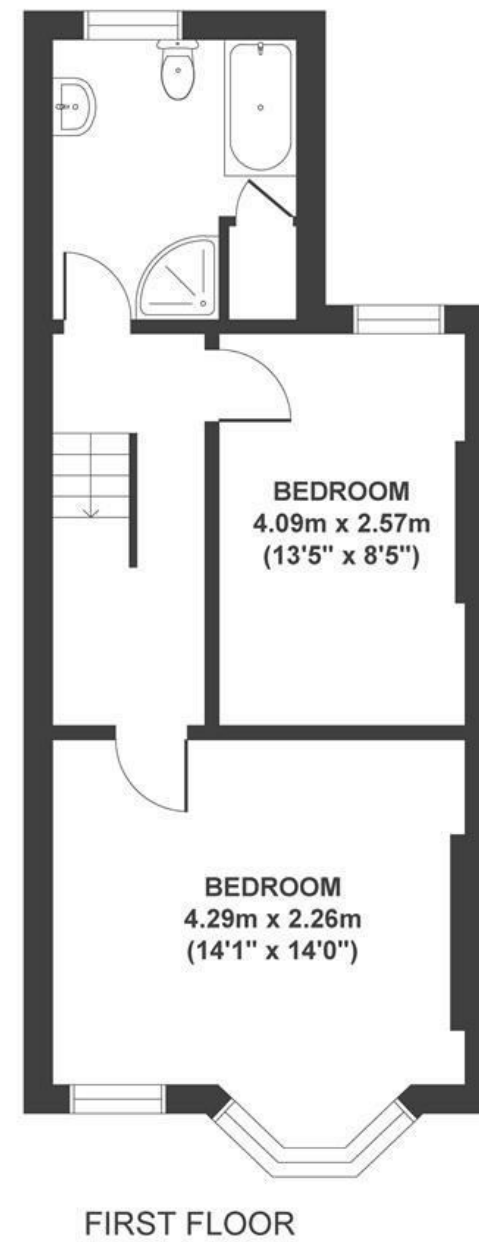
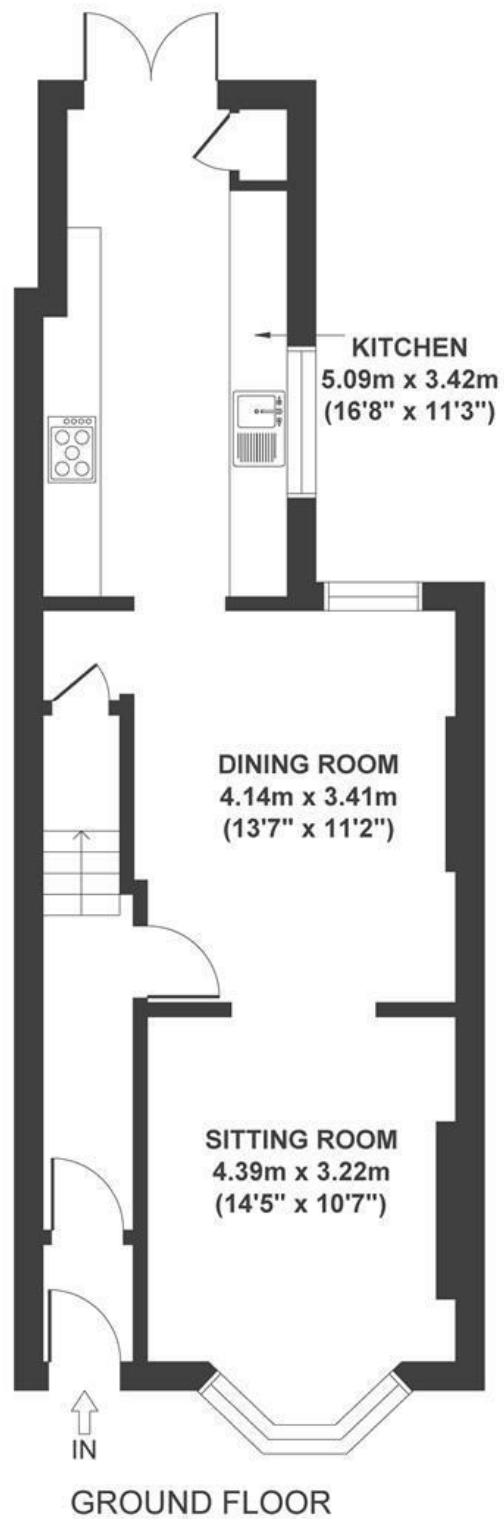


# Repton Road

## BRISLINGTON

APPROXIMATE FLOOR AREA  
90 SQM / 968 SQFT



Boardwalk

# Repton Road

, BRISTOL

£

£400,000



BS4 3LU

zzz

2 Bedrooms



1 Bathrooms

*"Our home truly adapts to the seasons, open and bright in the summer, yet cosy and welcoming in the winter. There's a wonderful sense of community and with Sandy Park just a short stroll away, great coffee is always close at hand."*

