



Beehive Road, Bolton, BL3

£1,255 Per Month

Situated just to the south side of Bolton Town Centre, Beehive Mill is wonderful new development of 2, 3 and 4 bedroom homes offering a perfect mix of urban and rural living.

The welcoming central hallway of the Grantham sits in between the living room and the kitchen. A house designed with you in mind, the spacious lounge provides the perfect area to relax, whilst the dining/kitchen area provides a great place to spend time and entertain with its French windows opening on to the garden. A WC is conveniently situated off the hallway, completing the downstairs.

Upstairs, the house has a large master bedroom with fitted, mirrored wardrobes, and a further two bedrooms. A stylish family bathroom with a separate bath and shower provides the best of both worlds, whilst a storeroom on the landing provides a space to store bits and pieces.

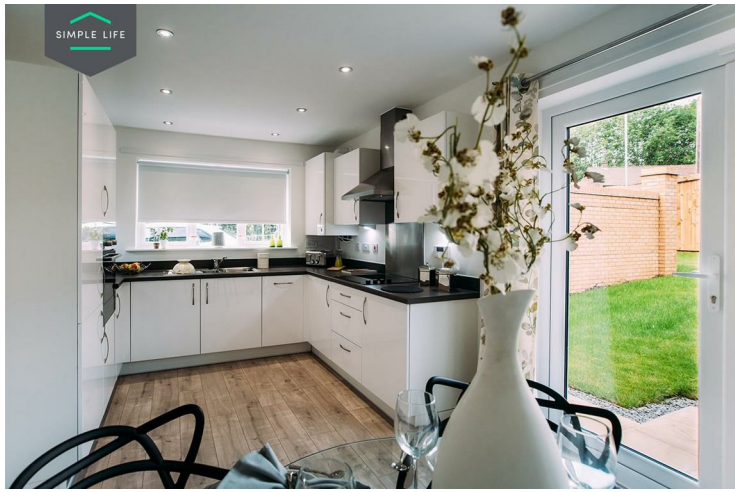
Beehive Mill is less than 2 miles south of Bolton, and only 9 miles North of Manchester. The site benefits from excellent transport links as Moses Gate train station is less than a mile away providing direct access to Bolton, Manchester, Wigan and Blackburn. Alternatively, you'll have easy access to M61 taking you to Lancashire, Merseyside and beyond.

You'll be ideally placed for nightlife as Bolton town centre has plenty of lively pubs and restaurants. For the shopaholics there is Burnden Park shopping centre close by, whilst Bolton itself has a plethora of high street outlets. For those who seek the great outdoors, there is Moses Gate Country Park offering fishing and water sports and nature reserve activities.

To access the site please use postcode BL3 2JU.

Deposit £1440
Holding Deposit £280
Council Tax B
Unfurnished
Available 14th August 2026





Key Features

- Car Parking Space
- Dishwasher
- Washing/drying machine
- Carpets up the stairs and in the bedrooms
- Blinds in the bedrooms
- Security Alarm
- Fridge-freezer
- Modern kitchen worktops and units
- Private back garden

Location

