

2 Fairlea Avenue, Didsbury, Manchester, M20 6GN



JP&Brimelow
ESTATE AGENTS



 3  2  2  D

*****VIDEO TOUR AVAILABLE***** A stylishly presented and extended **THREE BEDROOM** bay fronted semi-detached home, occupying a sought-after residential position just off School Lane in Didsbury.

Ideally located with excellent transport links on the doorstep, the property offers convenient access to Manchester City Centre, Manchester Airport and Didsbury Village. Wilmslow Road is within walking distance, offering an excellent selection of popular restaurants, bars, cafés and independent shops.

The well-planned accommodation briefly comprises a porch, a welcoming entrance hallway with a downstairs W.C. To the front is a lounge featuring a bay window, while to the rear a spacious open plan dining/fitted kitchen/breakfast room provides access to the enclosed rear garden completing the ground floor.

The first floor comprises a landing leading to three bedrooms, a two-piece white bathroom suite, and a separate W.C.

Externally, the property enjoys a blocked paved driveway providing off-road parking, a front lawned garden and an attractive enclosed rear garden creating an ideal space for relaxing and entertaining.

Ideally positioned close to Didsbury Park, this property enjoys easy access to its open green spaces, children's playground, and café. Wilmslow Road is just moments away, providing excellent transport links, while nearby Fletcher Moss Botanical Gardens and the River Mersey offer scenic walking, cycling, and running routes.

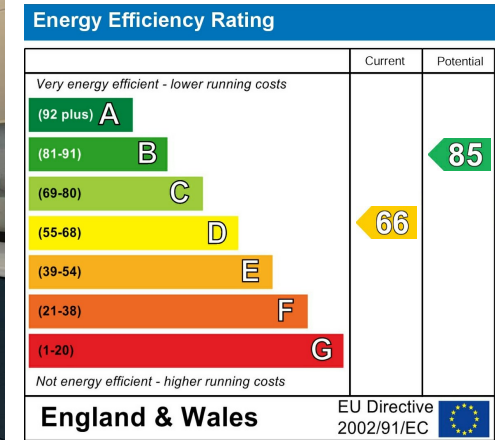
An internal viewing is highly recommended to fully appreciate the location, versatility and quality of accommodation this exceptional family home has to offer.

£530,000



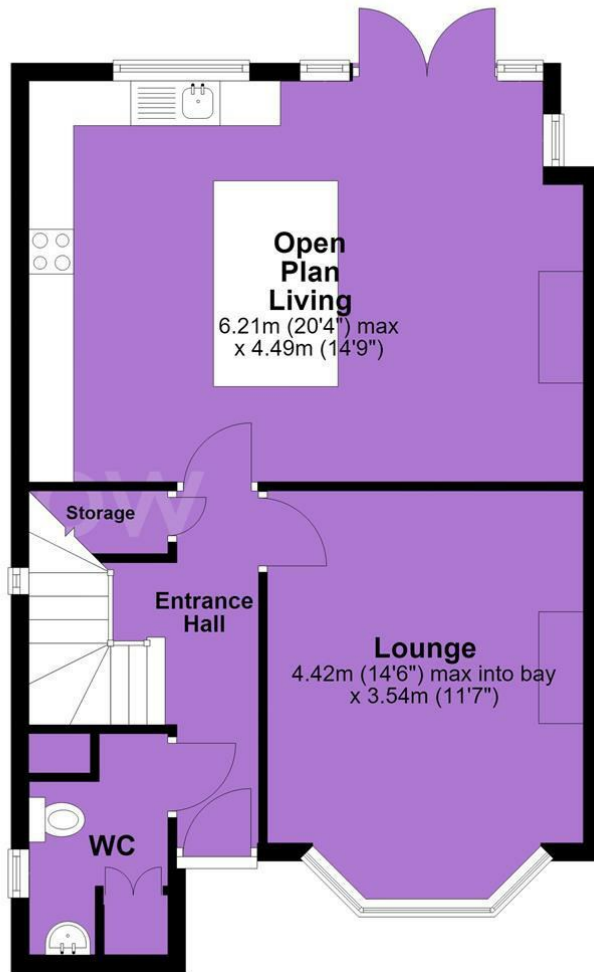


EPC Chart

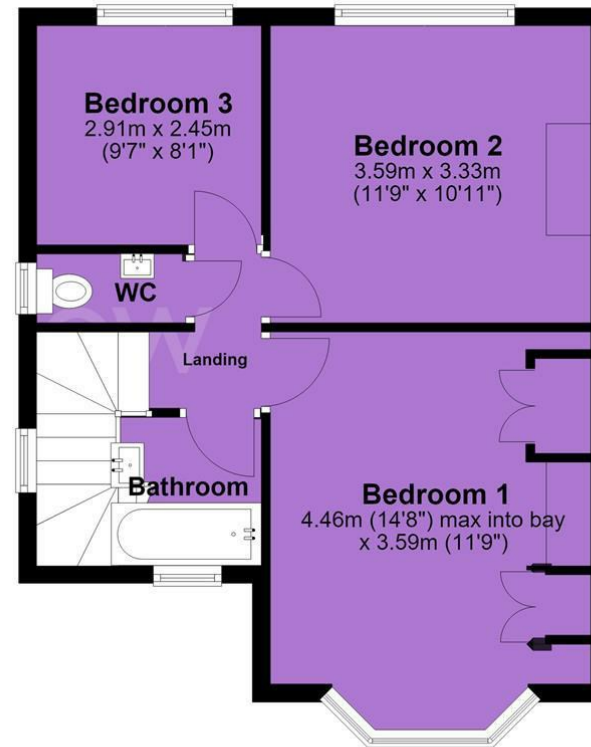


Tenure: Freehold Council Tax Band: C

Ground Floor



First Floor



JP & Brimelow Estate Agents Ltd
430 Barlow Moor Road, Manchester, M21 8AD
Tel: 0161 8822233
E: sales@jpbrimelow.co.uk www.jpandbrimelow.co.uk



JP & Brimelow
ESTATE AGENTS

NOTICE: JP & Brimelow Estate Agents Ltd for themselves and for the vendors or lessors of this property whose agents they are give notice that:

- (i) the particulars are set out as a general outline only for the guidance of intending purchasers or lessees, and do not constitute, nor constitute part of, an offer or contract;
- (ii) all descriptions, dimensions, references to the condition and necessary permissions for use and occupation, and other details are given in good faith and are believed to be correct but any intending purchasers or tenants should not rely on them as statements or representations of fact but must satisfy themselves by inspection or otherwise as to the correctness of each of them;
- (iii) no person in the employment of JP & Brimelow Estate Agents Ltd has any authority to make or give any representation or warranty whatever in relation to this property.

jpandbrimelowstateagents

@jpandbrimelow

