



ALEX BRITEZ CABRAL

exp[®] UK

@ alex.cabral@exp.uk.com

alexbritezcabral.exp.uk.com

07774 123 444

Mortimer Crescent, London, NW6

Guide Price £500,000 - £550,000

3 1

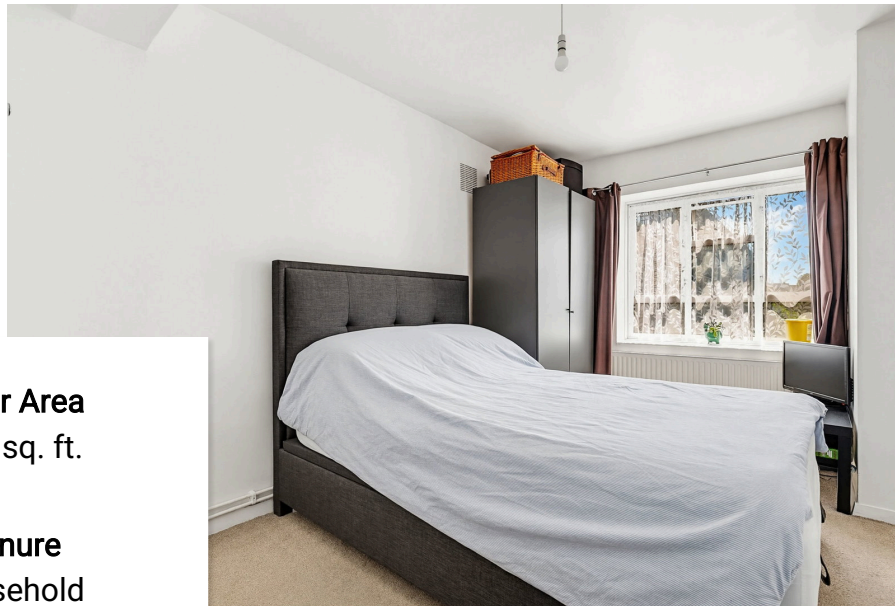


QUOTE AB0697

Guide Price - £500,000 - £500,000

Offering nearly 900 Sq Ft of living space, this is a well laid out three bedroom maisonette situated within a modern block in the heart of Kilburn. The property arrives to market in good condition, and also offers scope for further improvement; making it ideal for first time buyers or investors alike. Furthermore, the property benefits from a large private balcony, and also offers access to the extensive communal gardens. Kilburn Park Station (Underground) is nearby (0.4 Miles), while Kilburn High Road Station (Overground) is also close by. The many local amenities of Maida Vale, St John's Wood, and South Hampstead are also all located within a mile, while the historic green open spaces of Regent's Park are just over a mile away.





Floor Area
859 sq. ft.

Tenure
Leasehold

Service Charge
£2090 per annum

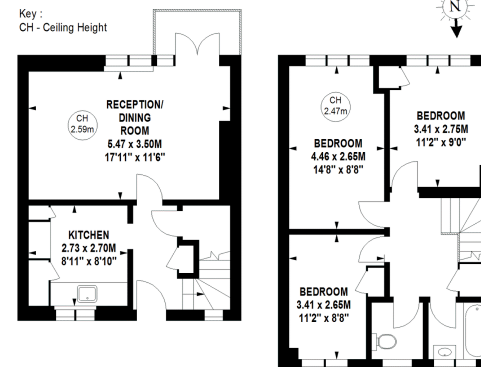
Ground Rent
£10 per annum



Haliwell House, NW6

Approximate gross internal area
79.80 sq m / 859 sq ft

Key :
CH - Ceiling Height



385 sq ft

Second Floor

474 sq ft

Third Floor

Although every attempt has been made to ensure accuracy, all measurements are approximate.
This floorplan is for illustrative purposes only and not to scale.
Measured in accordance with RICS standards.

Energy Efficiency Rating

	Current	Potential
<i>Very energy efficient - lower running costs</i>		
(92 plus) A		
(81-91) B		
(69-80) C		
(55-68) D	65	65
(39-54) E		
(21-38) F		
(1-20) G		
<i>Not energy efficient - higher running costs</i>		
England & Wales	EU Directive 2002/91/EC	