



Carmel Court, Holland Road, Manchester.

£725 PCM

In Person Viewings Only

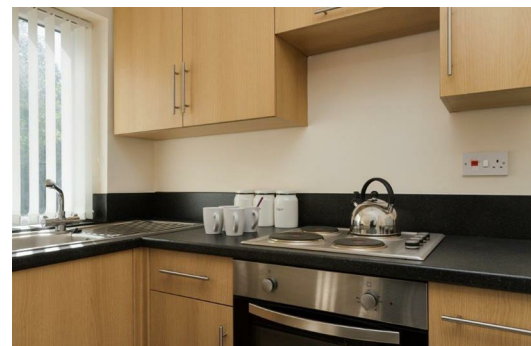
This cracking one-bedroom apartment is situated in the leafy Blackley area of Manchester. Close to Cheetham Hill and offering great transport links to the city, you really are in a fantastic location with everything you could possibly need, right on the doorstep.

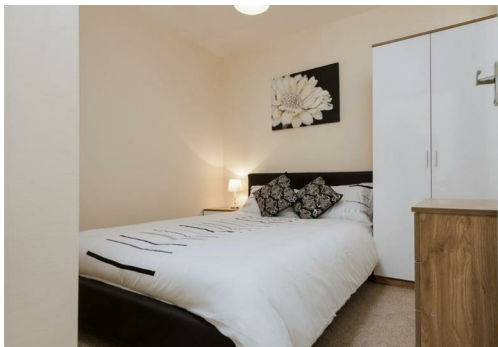
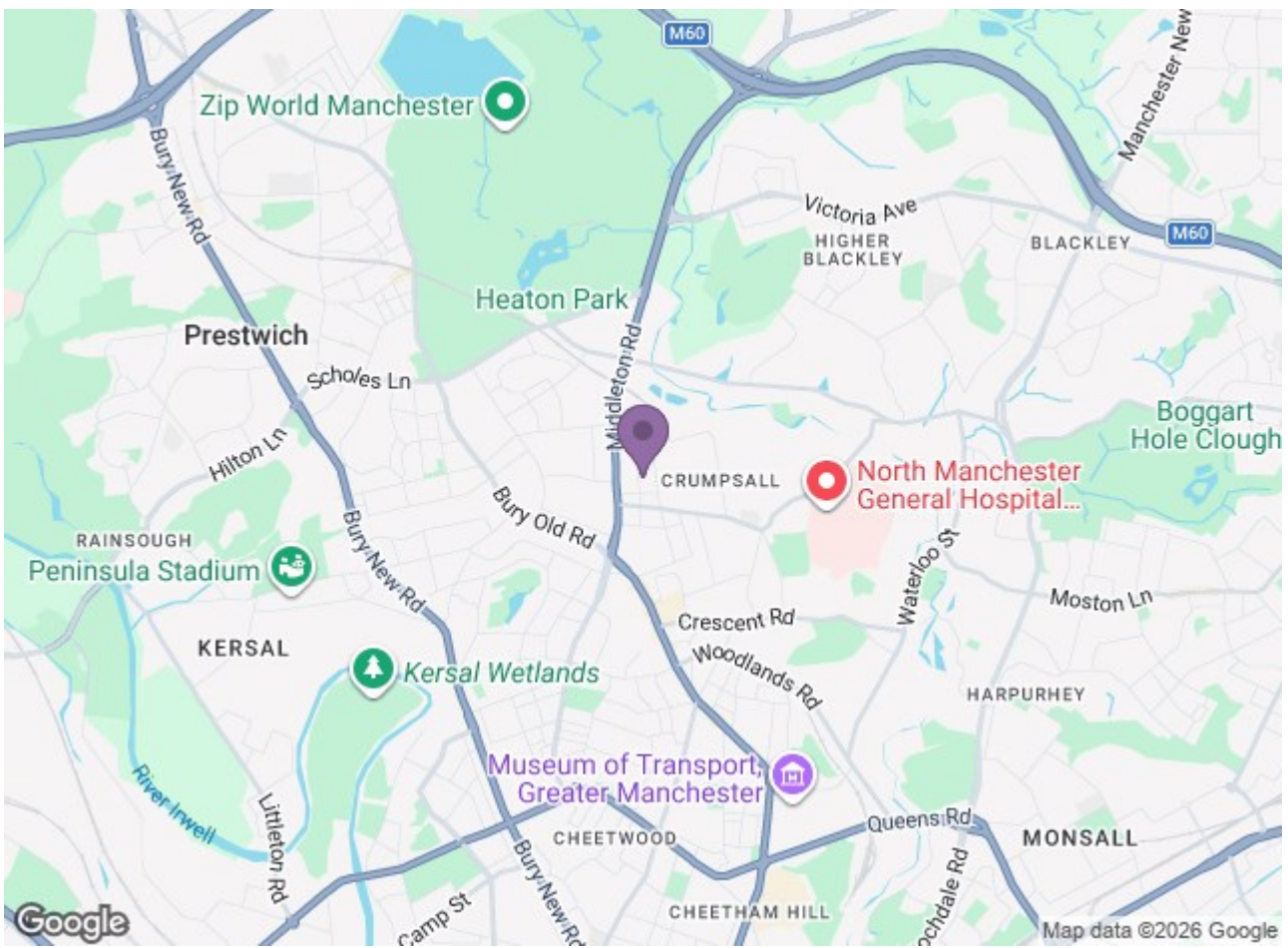
Take a step inside and you'll find a bright open-plan living room with a fully fitted kitchen, a decent sized double bedroom and a three-piece suite in the swish bathroom. There's plenty of space inside so you'll have more than enough room to really make yourself at home. Outside there's plenty of street parking too - people who struggle with parking on a regular basis will know how much of a bonus this is.

If you're interested in having a closer look or have any questions, do get in touch.

And just so you know, the pictures used in this advertisement are marketing images taken from a similar apartment. The internal fixtures, fittings and furnishings will vary.

Available Now (subject to application and referencing)





Energy Efficiency Rating		Environmental Impact (CO ₂) Rating	
Current	Potential	Current	Potential
80	80	88	88

England & Wales