



LONSDALE HOUSE, W11

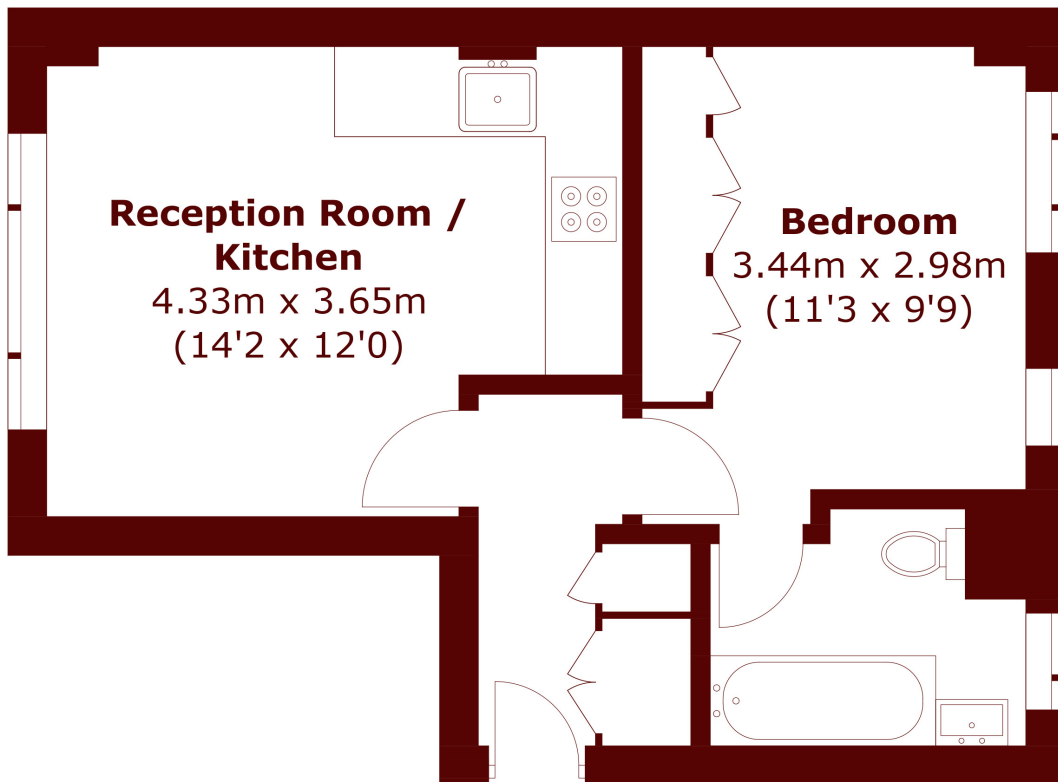
£525 per week (£2,275 per month)

A stunning one-bedroom apartment ideally positioned moments from the world-famous Portobello Road in the heart of Notting Hill.

One bedroom
Natural light
Wooden flooring

Bright and airy
Moments from Portobello Road
EPC - D

STEP INSIDE LONSDALE HOUSE



Total area (approx.): 35.4 sq. m (381.0 sq. ft)

Notting Hill
020 7313 6910

Energy Rating: D We aim to make our particulars both accurate and reliable. However, they are not guaranteed; nor do they form part of an offer or contract. If you require clarification on any points then please contact us, especially if you're traveling some distance to view. Please note that appliances and heating systems have not been tested and therefore no warranties can be given as to their good working order

**MARSH &
PARSONS**