

Boardwalk

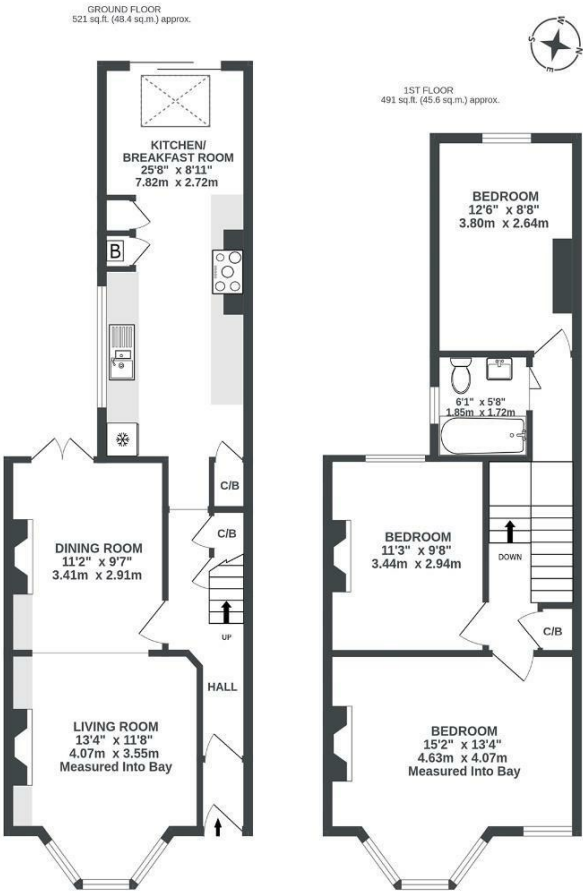
# Belmont Road

BRISLINGTON, BRISTOL

## Belmont Road

BRISLINGTON

APPROXIMATE FLOOR AREA  
94 SQM / 1011 SQFT



Illustrations are for reference purposes only, measurements are approximate, not to scale.

Boardwalk

# Belmont Road

BRISLINGTON, BRISTOL



£450,000



BS4 3PB



3 Bedrooms



1 Bathrooms

*"Breakfast with balloons, evenings by the fire – welcome to Belmont Road! We've loved making this our first home together and our first taste of life in Bristol. From renovating the house and adding our own personal touch, to creating memories that have made it feel so special, Belmont Road has truly been the perfect place to call home. The community here is wonderful, and we've cherished everything from peaceful dog walks in Nightingale Valley, to lazy mornings with coffee from Kin and delicious cannoli from the local deli. The garden has been our sunshine haven in summer, where we've sat with breakfast and watched the hot air balloons float by overhead. In the winter, nothing has been cosier than evenings curled up in front of the log burner. And the location couldn't be better: just a quick bus ride into the city for nights out, a short drive to beautiful countryside walks, and even a gentle stroll to fantastic local breweries."*

