



# Falcon

01752 600444

## Apartment 5, 67 Milehouse Road

Milehouse Road, Plymouth, PL3 4AF

Guide Price £200,000 - £210,000





## In Brief

### Ground floor apartment with private garden

<b>Reception Rooms</b>	Open plan Living room - dining area & separate Kitchen	<b>Parking</b>	Secured gated parking
<b>Bedrooms</b>	2 Double Bedrooms	<b>Council Tax</b>	B
<b>Heating</b>	Gas Central Heating		
<b>Area</b>	941SQFT		
<b>Tenure</b>	Share of Freehold		

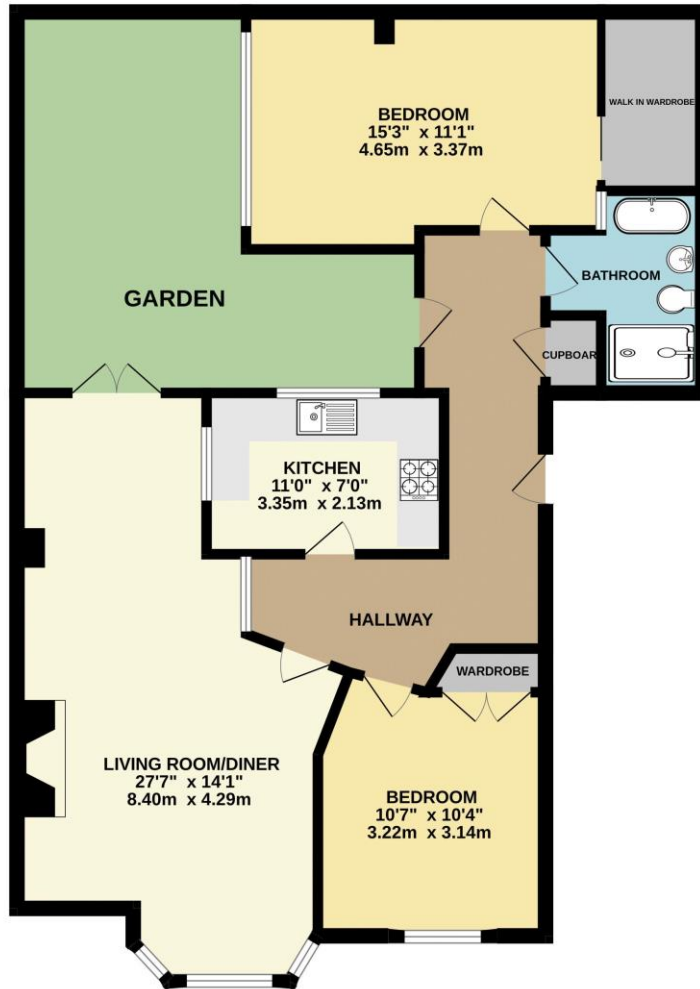
## Description

Falcon are delighted to present to the market this spacious and beautifully presented Two double bedroom ground-floor apartment, set within the stunning period building known as Springfield Villas. This charming home further benefits from its own private garden and secure gated parking to the rear. Approached via impressive double gates to the front of the property, a pathway leads to the main entrance of the building and into the vestibule, opening through to the communal hallway. The apartment itself is conveniently located on the left-hand side, where you enter into a welcoming central hallway providing access to the main accommodation. To the front of the property is a bright and spacious open-plan living and dining area, featuring a beautiful bay window that fills the room with natural light and creates a wonderful space for both relaxing and entertaining. From the dining area, double doors open out to the private terrace and garden, offering a seamless connection between indoor and outdoor living. The modern kitchen is fitted with a range of base units, work surfaces, and wall-mounted cupboards, providing ample storage and space for a variety of appliances. The apartment offers two well-proportioned double bedrooms. The main bedroom enjoys a lovely outlook over the garden through a large picture window and benefits from its own walk-in wardrobe. The second bedroom is also a comfortable double, ideal for guests, family, or a home office. Completing the accommodation is a beautifully presented four-piece bathroom suite, comprising a WC, wash hand basin, bath, and a separate shower cubicle — a real showstopper and perfect space to unwind. One of the standout features of this apartment is the private garden, thoughtfully created by the current owner to provide a calm and relaxing outdoor retreat, ideal for entertaining friends or enjoying peaceful moments outside. The garden features attractive cobbled flooring that adds character and charm to this unique space. A gate from the garden leads directly to the rear parking area, where the property benefits from an allocated space within a secure, private gated car park. This is a fantastic opportunity to acquire a wonderful home within an attractive period building, situated in a popular residential location.

Need A Mortgage?

Don't pay more than you need to for your mortgage advice:  
ours is only £195 paid when you move!

GROUND FLOOR  
941 sq.ft. (87.4 sq.m.) approx.



TOTAL FLOOR AREA : 941 sq.ft. (87.4 sq.m.) approx.  
Made with Metropix ©2023



We have not tested any apparatus, equipment, fixtures and fittings or services and so cannot verify that they are connected, in working order or fit for the purpose. Neither have we had sight of the legal documents to verify the Freehold or Leasehold status of any property; or sight of any consents, including Planning Permissions, building Regulations and Breaches of Covenants that may be required for alterations to the property. A buyer is advised to obtain verification from their Solicitor and/or Surveyor. Items shown in photographs are NOT included unless specifically mentioned within the Sales Particulars. Any floor plans on these details are not drawn to scale and are intended for guidance only

Falcon Property is an Introducer to Bradleys Financial Management Ltd. They are appointed representatives of Sesame Ltd who are authorised and regulated by the Financial Services Authority. Bradleys do not charge for mortgage advice, however a fee paying option is available. Typical fee is £195. Bradleys Financial Management: 16 Mannamead Road, Mutley, Plymouth, PL4 7AA

**Your home may be repossessed if you do not keep up repayments on your mortgage.**

