



Victoria Riverside, Dantzic Street, Manchester, M4 4DD

£282 Per Week

VICTORIA RIVERSIDE A FLAGSHIP NEW DEVELOPMENT IN MANCHESTER M4

AMENITIES INC: CONCIERGE, GYM, CO-WORKING SPACES, RESIDENTS BAR AND LOUNGE PLUS COMMUNAL GARDENS

CLOSE TO VICTORIA STATION

LOCATED NORTH OF THE CITY CENTER BETWEEN THE GREEN QUARTER & ANCOATS

Our one bedroom apartment is located on the 6th floor and will be furnished to a high standard

AVAILABLE FROM NOW

- VICTORIA RIVERSIDE M4
- LOCATED BETWEEN GREEN QUARTER & ANCOATS
- RESIDENTS BAR & LOUNGE
- AVAILABLE FROM NOW
- FLAGSHIP NEW DEVELOPMENT
- ONE BEDROOM APARTMENT
- CLOSE TO VICTORIA STATION & CITY CENTER
- LOCATED NORTH OF THE CITY CENTER
- CONCIERGE, GYM, CO WORKING, COMMUNAL GDNS
- FURNISHED

Victoria Riverside, Dantzic Street, Manchester, M4 4DD



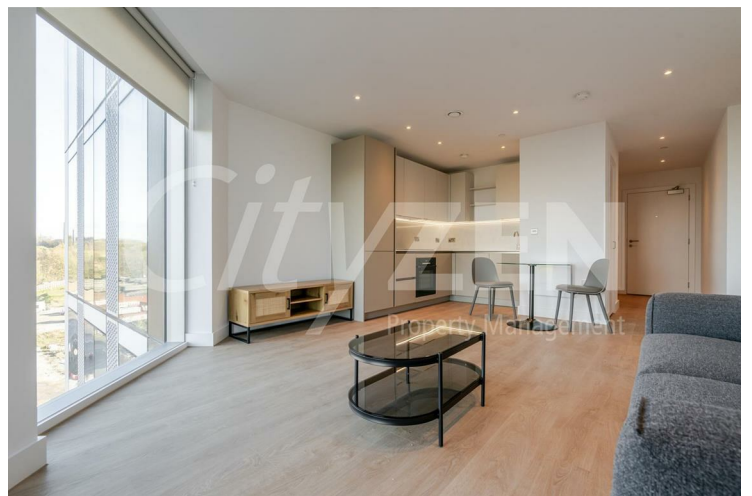
BEDROOM



RECEPTION



BEDROOM



RECEPTION



BEDROOM



BATHROOM

Victoria Riverside, Dantzic Street, Manchester, M4 4DD



KITCHEN



VICTORIA RESIDENCE

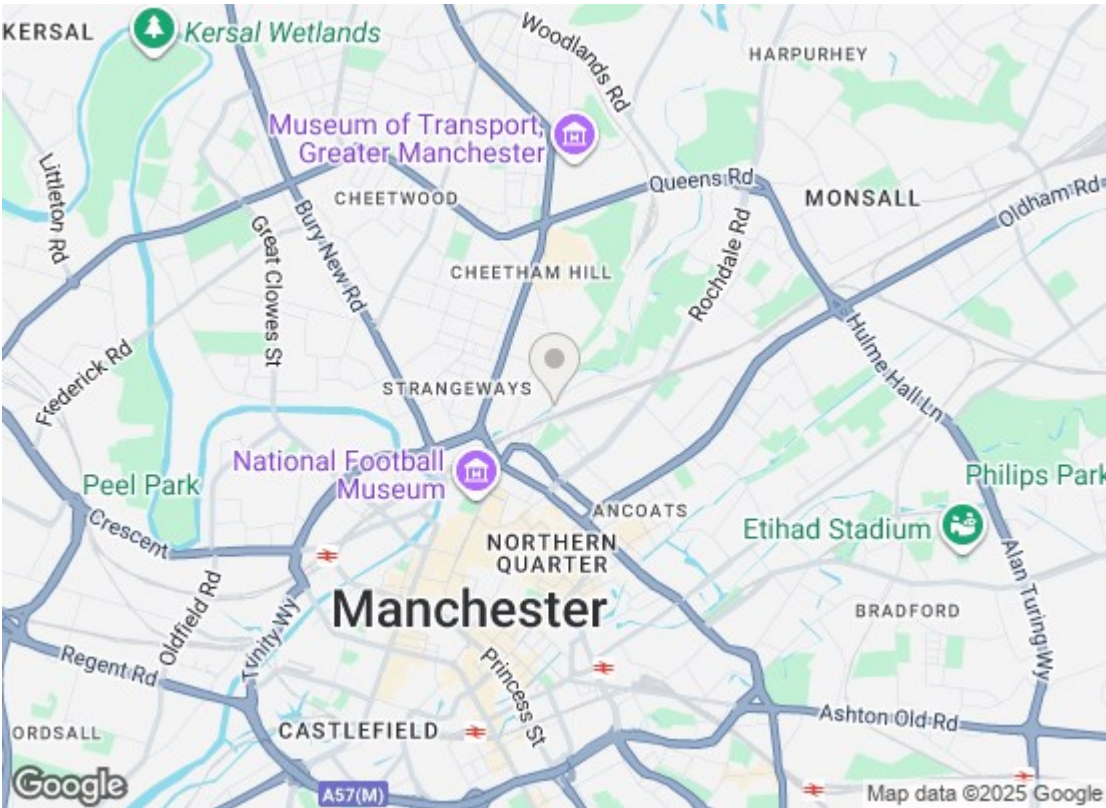


RECEPTION



RECEPTION

Apartment 603, Park view, Victoria Riverside, Manchester, M4 4DD
Approximate Gross Internal Area 565 sq ft - 52 sq m



| Energy Efficiency Rating | | |
|---|---------|-------------------------|
| | Current | Potential |
| Very energy efficient - lower running costs | | |
| (92 plus) A | | |
| (81-91) B | 86 | 86 |
| (69-80) C | | |
| (55-68) D | | |
| (39-54) E | | |
| (21-38) F | | |
| (1-20) G | | |
| Not energy efficient - higher running costs | | |
| England & Wales | | EU Directive 2002/91/EC |
| Environmental Impact (CO ₂) Rating | | |
| | Current | Potential |
| Very environmentally friendly - lower CO ₂ emissions | | |
| (92 plus) A | | |
| (81-91) B | | |
| (69-80) C | | |
| (55-68) D | | |
| (39-54) E | | |
| (21-38) F | | |
| (1-20) G | | |
| Not environmentally friendly - higher CO ₂ emissions | | |
| England & Wales | | EU Directive 2002/91/EC |

We have prepared these property particulars as a general guide to a broad description of the property. They are not intended to constitute part of an offer or contract. We have not carried out a structural survey and the services, appliances and specific fittings have not been tested. All photographs, measurements, floorplans and distances referred to are given as a guide only and should not be relied upon for the purchase of carpets or any other fixtures or fittings. Lease details, service charges and ground rent (where applicable) and council tax are given as a guide only and should be checked and confirmed by your Solicitor prior to exchange of contracts.